

clever



5 Ashford Road

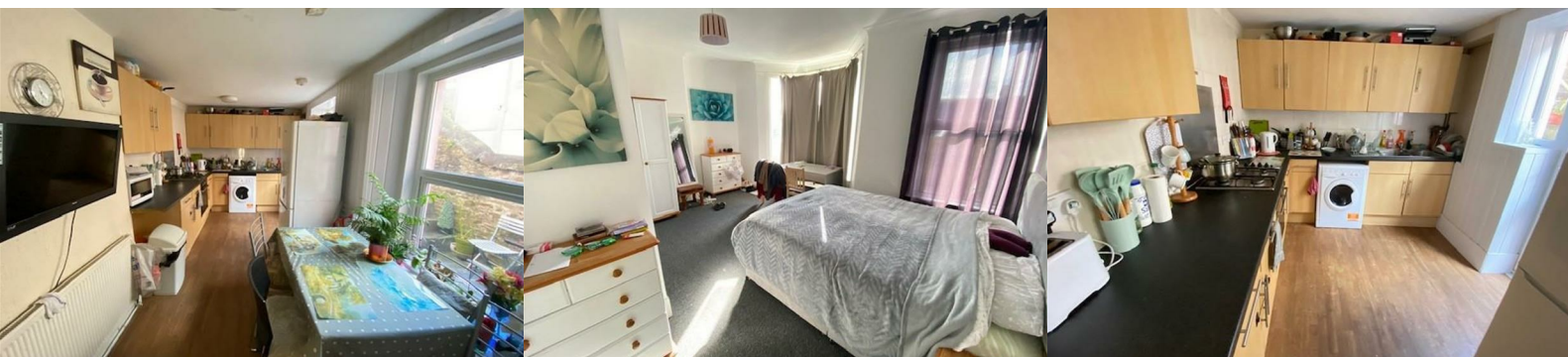
, Plymouth, PL4 7BL

Asking price £240,000



FANTASTIC HMO INVESTMENT PROPERTY SITUATED IN A CENTRAL LOCATION PRODUCING APPROX £30,000 GROSS INCOME.

Presented to an excellent standard is this 5 Bed (one with En-Suite) period home situated in a desirable, central location. Currently arranged as a profitable HMO this would make an excellent first investment or addition to a portfolio. Accommodation comprises Entrance Hall, two Letting Rooms, sizable communal Lounge/Kitchen/Dining Room, three additional Letting Rooms situated on the first floor.



Area Map



Floor Plans



Energy Efficiency Graph

Energy Efficiency Rating		Environmental Impact (CO ₂) Rating			
	Current	Potential		Current	Potential
Very energy efficient - lower running costs			Very environmentally friendly - lower CO ₂ emissions		
(92 plus) A			(92 plus) A		
(81-91) B			(81-91) B		
(69-80) C			(69-80) C		
(55-68) D			(55-68) D		
(39-54) E			(39-54) E		
(21-38) F			(21-38) F		
(1-20) G			(1-20) G		
Not energy efficient - higher running costs			Not environmentally friendly - higher CO ₂ emissions		
England & Wales	EU Directive 2002/91/EC		England & Wales	EU Directive 2002/91/EC	

These particulars, whilst believed to be accurate are set out as a general outline only for guidance and do not constitute any part of an offer or contract. Intending purchasers should not rely on them as statements of representation of fact, but must satisfy themselves by inspection or otherwise as to their accuracy. No person in this firm's employment has the authority to make or give any representation or warranty in respect of the property.