

clever



8 Beds 10 Kinterbury Street

, Plymouth, PL1 2DG

£110

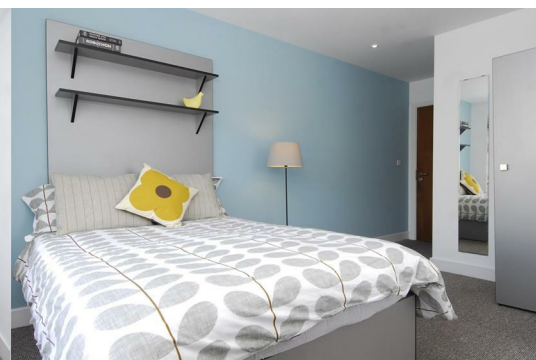
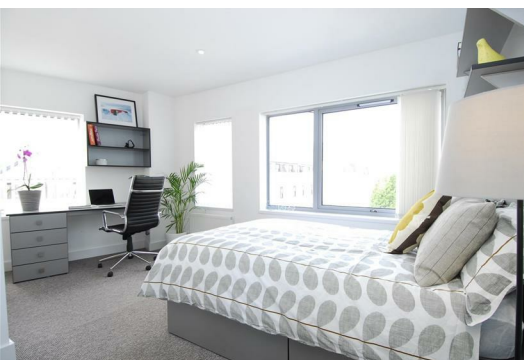


Student Apartment - Available from September 1st, 2024

Looking for a cool place to live in the city center? Check out this awesome 8-bedroom apartment, perfect for students like you. With your own bathroom in each room, you'll have all the privacy you need. Plus, there are big shared areas where you can hang out with your roommates or hit the books.

Some lucky folks even get sea views from their rooms! Imagine waking up to that every morning. And at just £120 per person per week, it's a steal for city living.

Don't wait too long - grab your spot now and get ready for the ultimate student experience!



Area Map



Floor Plans



Energy Efficiency Graph

These particulars, whilst believed to be accurate are set out as a general outline only for guidance and do not constitute any part of an offer or contract. Intending purchasers should not rely on them as statements of representation of fact, but must satisfy themselves by inspection or otherwise as to their accuracy. No person in this firm's employment has the authority to make or give any representation or warranty in respect of the property.