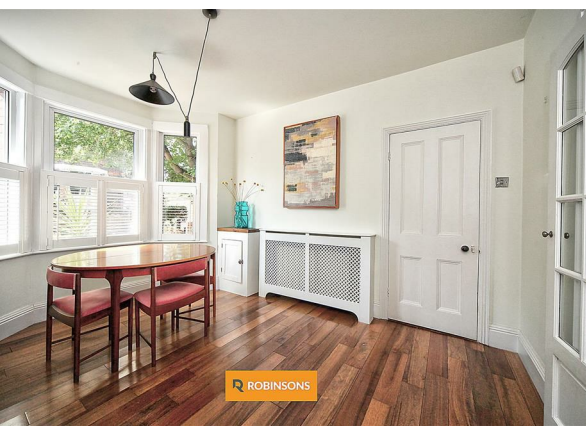
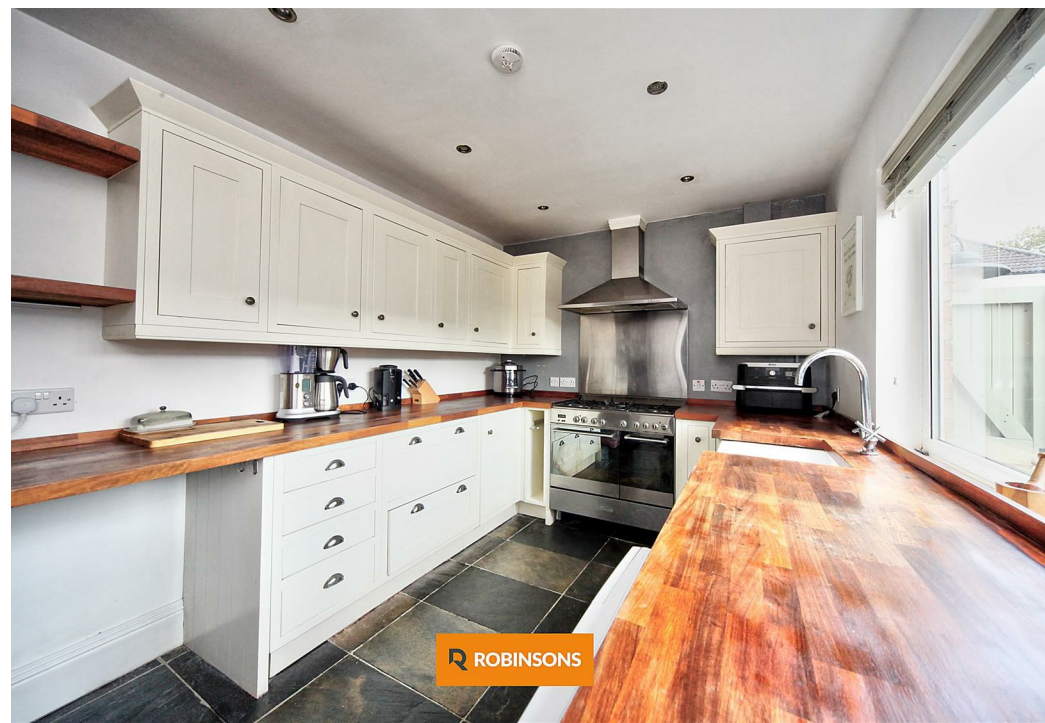
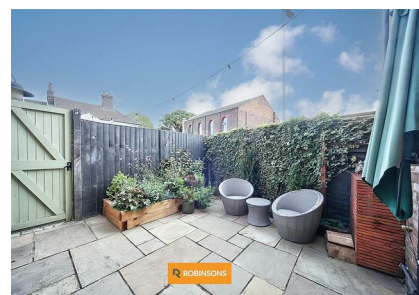
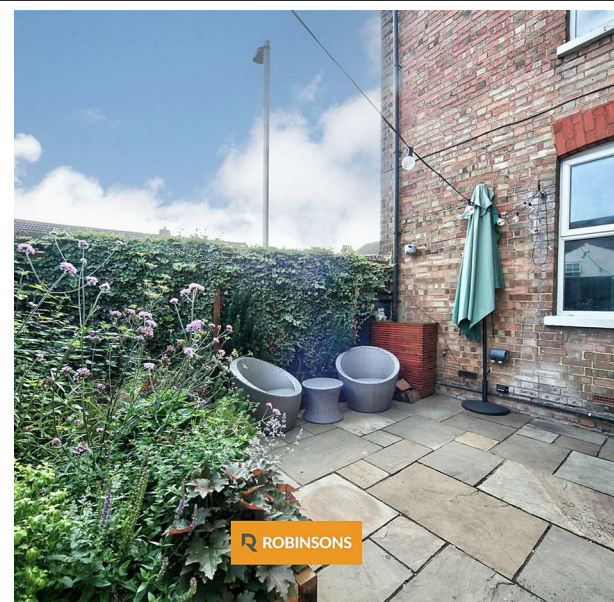
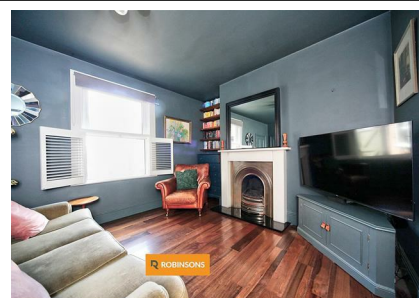
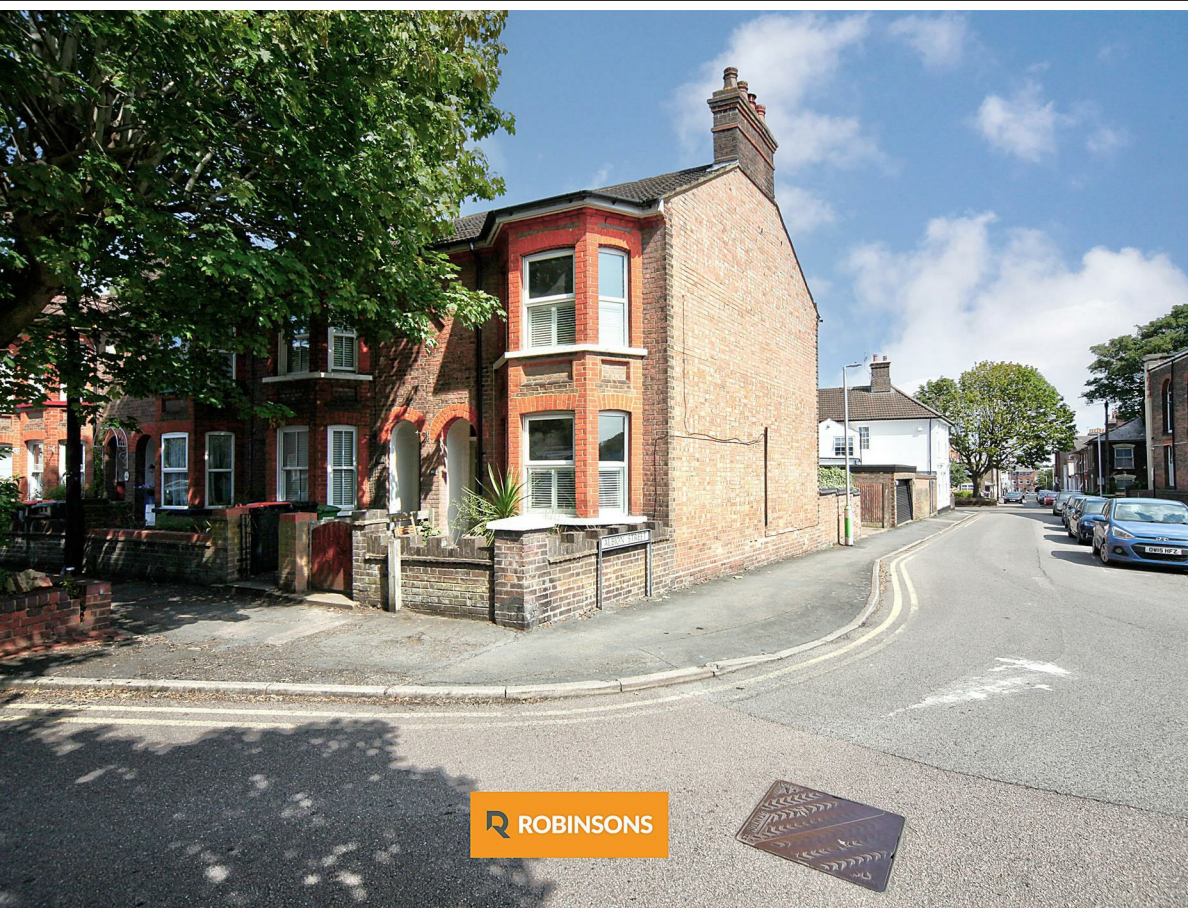


10 Princes Street, Dunstable, Bedfordshire, LU6 3AX  
Fixed Asking Price £350,000

**ROBINSONS**

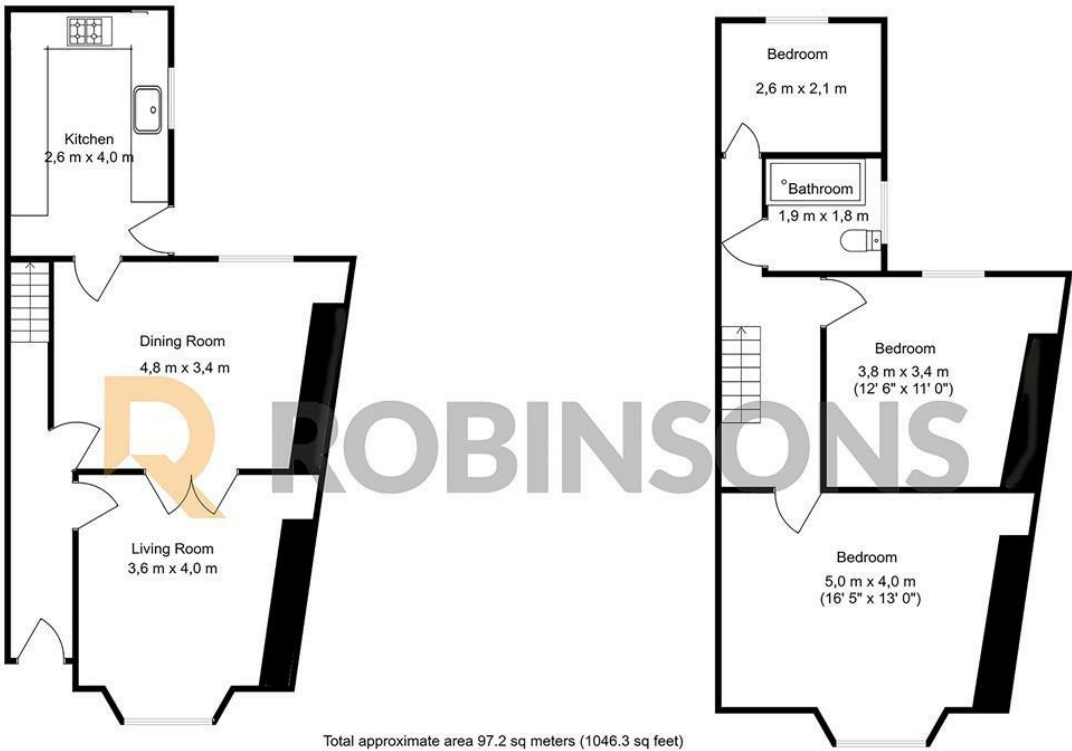




NO UPPER CHAIN – SPACIOUS THREE-BEDROOM VICTORIAN END-OF-TERRACE IN THE HEART OF DUNSTABLE, FEATURING A NEWLY FITTED BOILER, DRIVEWAY AND OFF-STREET PARKING.

This beautifully presented three-bedroom Victorian end-of-terrace home is ideally located in central Dunstable and is available now in excellent condition. A standout benefit rarely found in period properties is the off-street parking, complemented further by the installation of a brand-new boiler, offering peace of mind for the next owner. The property is ready for immediate occupation and benefits from no onward chain.

The accommodation comprises a welcoming living room, dining area and fitted kitchen. To the first floor there is a bay-fronted principal bedroom, two further bedrooms and a family bathroom. Outside, the property enjoys a low-maintenance rear garden and off-road parking for two vehicles.



Floorplan produced by Woodside Photography  
Floorplan is for illustration purposes only and all measurements are approximate



20 West Street  
Dunstable  
Bedfordshire  
LU6 1SX  
01582 661112  
sales@robinsons-estates.co.uk  
<https://www.robinsons-estates.co.uk>

