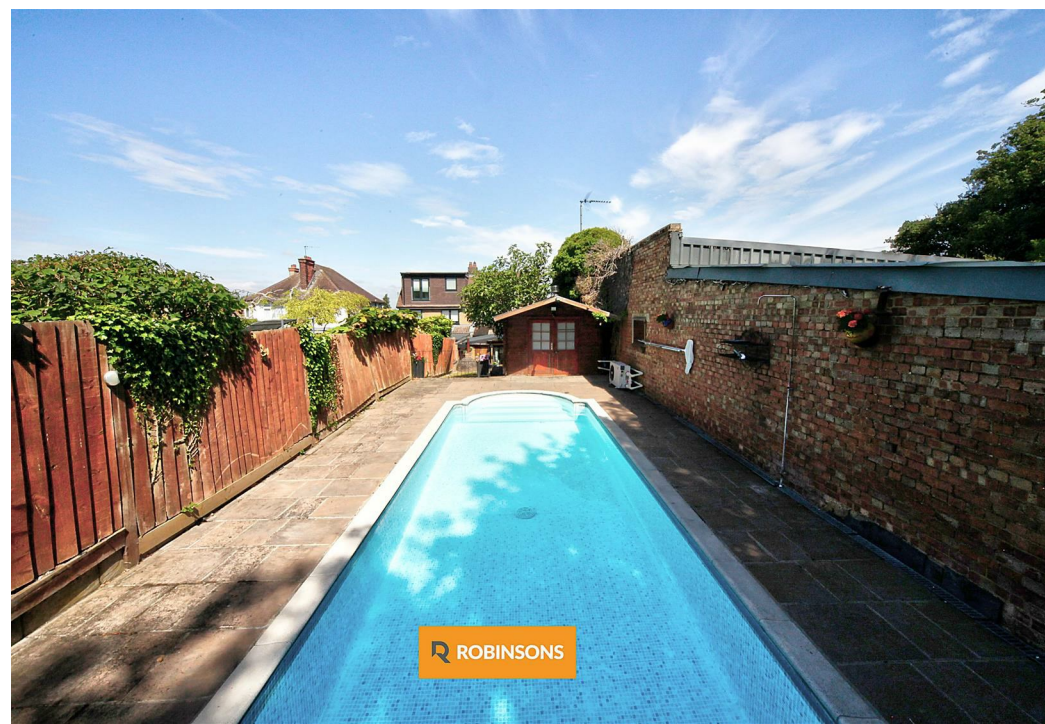
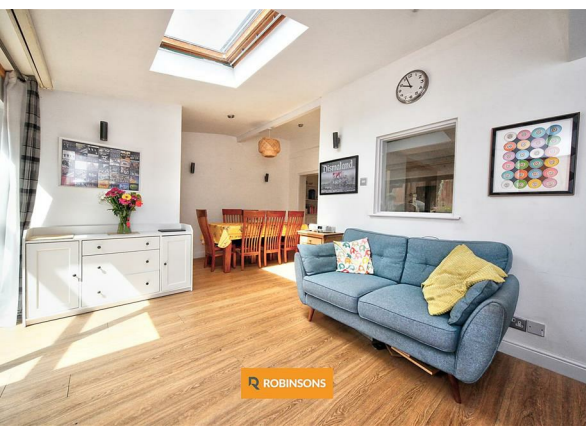
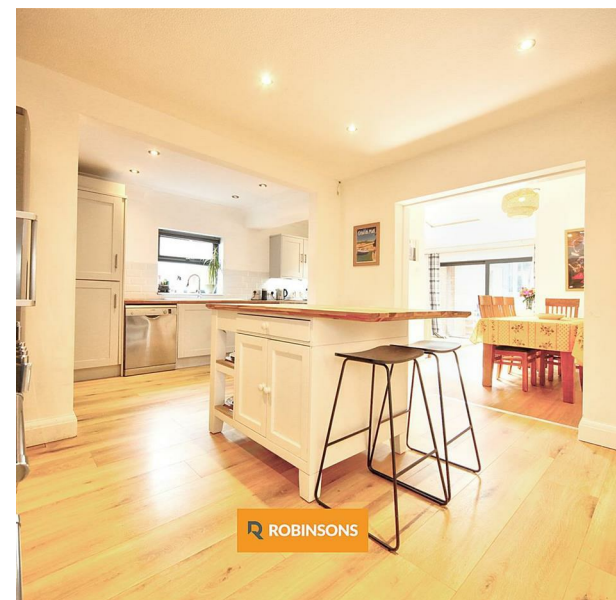
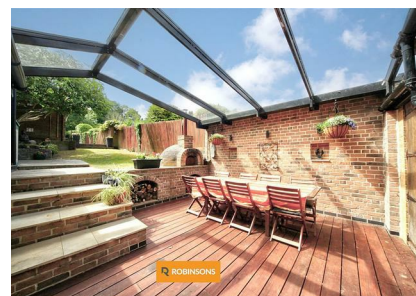


7 Tring Road, West, Dunstable, Bedfordshire, LU6 2PX
£565,000

ROBINSONS

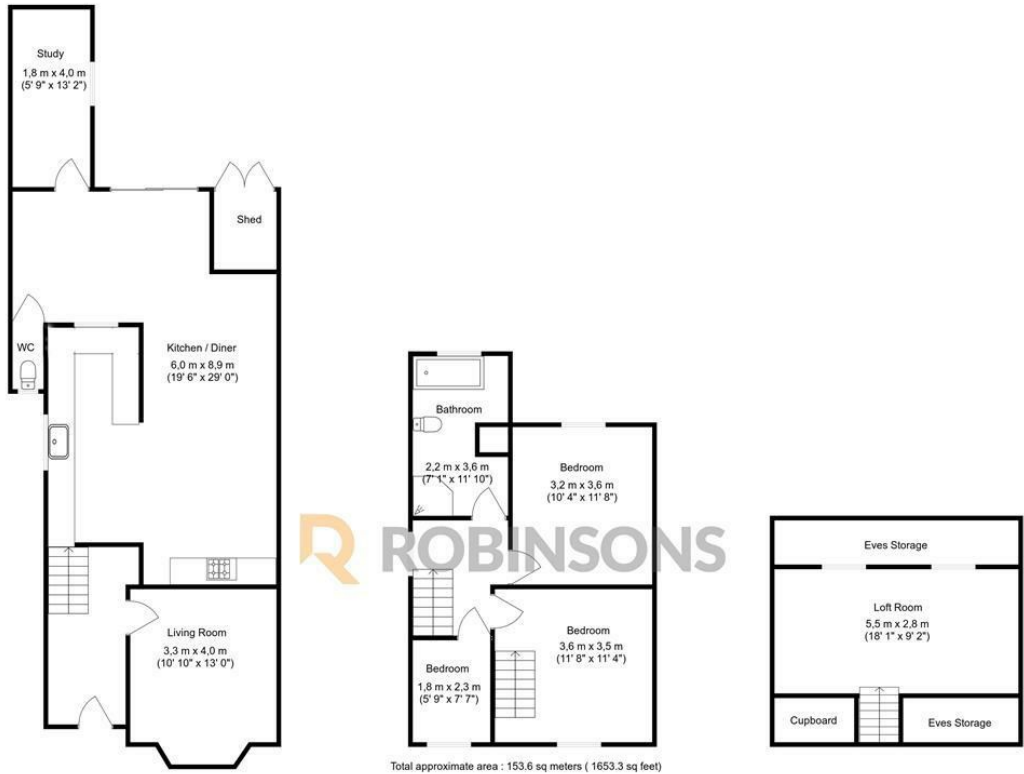


MOVE IN READY - EXTENDED FAMILY HOME WITH HEATED OUTDOOR SWIMMING POOL, LOFT CONVERSION & 230FT PRIVATE GARDEN | NO ONWARD CHAIN.

Located at the foot of the highly desirable Dunstable Downs, this impressive extended semi-detached family home offers exceptional space, privacy and lifestyle features, all set on a generous plot and available with no onward chain.

The ground floor is perfectly arranged for modern family living, comprising a cosy separate lounge and a stunning open-plan kitchen/dining room with central island, ideal for entertaining. Additional benefits include a dedicated home office, walk-in utility cupboard and a convenient downstairs WC.

Upstairs are three generously sized bedrooms and a stylish refitted four-piece family bathroom. The fully converted loft room, accessed via the third bedroom, provides a versatile additional space currently used as a fourth bedroom or hobby room, ideal for growing families or guests.



Floorplan produced by Woodside Photography
Floorplan is for illustration purposes only and all measurements are approximate



20 West Street
Dunstable
Bedfordshire
LU6 1SX
01582 661112
sales@robinsons-estates.co.uk
<https://www.robinsons-estates.co.uk>

