

7 Tring Road, West, Dunstable, Bedfordshire, LU6 2PX  
Offers Over £575,000

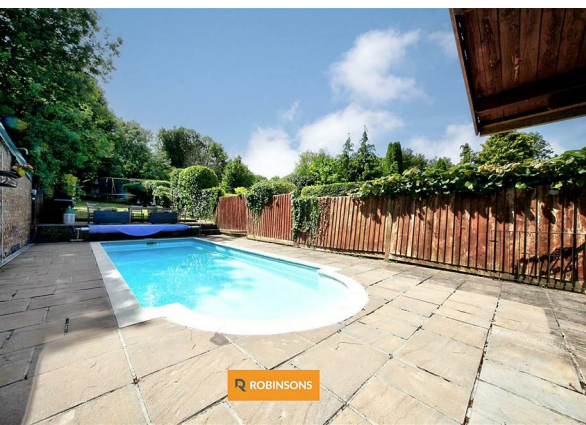
**ROBINSONS**



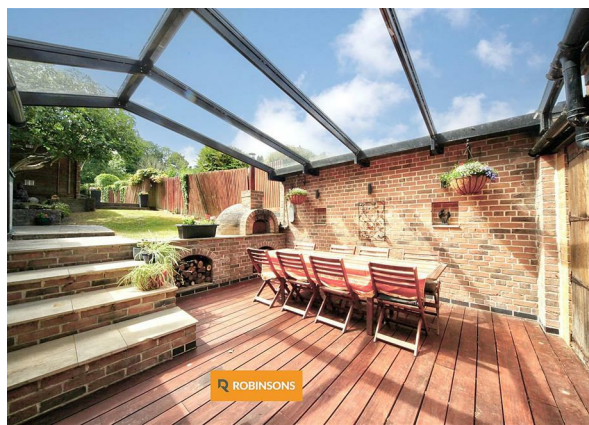
**ROBINSONS**



**ROBINSONS**



**ROBINSONS**



**ROBINSONS**



**ROBINSONS**

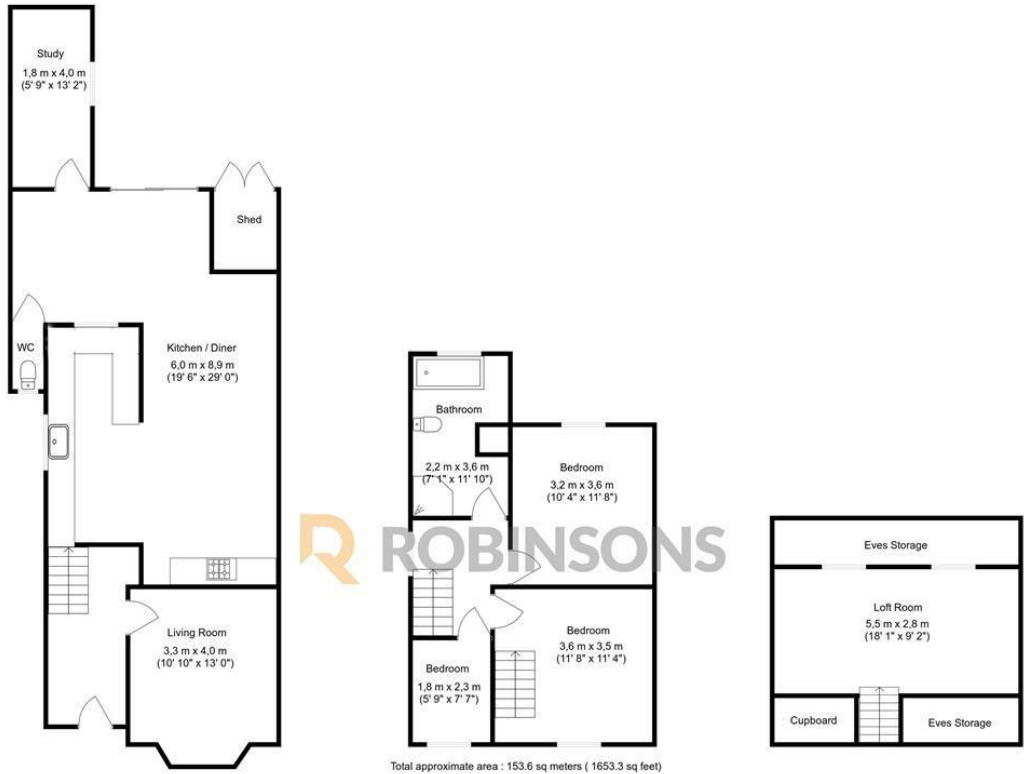


LUXURY FAMILY HOME WITH HEATED SWIMMING POOL, OUTDOOR SHOWER ROOM, FULL LOFT RENOVATION & 230FT REAR GARDEN WITH BRICK-BUILT PIZZA OVEN.

Situated at the foot of the beautiful Dunstable Downs, this extended semi-detached family home is offered with no onward chain. Set on a generous plot with great amounts of privacy, the property boasts a flexible and well-planned layout perfect for modern family living.

On the ground floor, you'll find a cosy separate lounge, a spacious open-plan kitchen and dining area featuring a central island, a dedicated home office, a walk-in utility cupboard, and a convenient downstairs W.C. Upstairs are three large bedrooms and a stylish refitted four-piece family bathroom. A fully converted loft room, accessed via the third bedroom, provides a versatile current fourth bedroom or hobbies room—ideal for growing families or guests.

The kitchen and dining area open directly onto a patio and an extensive rear garden, approximately 230 feet in length. The garden is laid mainly to lawn and bordered by mature trees and shrubs, featuring a covered decking area, timber shed, and a brick-built storage/playhouse. Outdoor amenities include a heated swimming pool alongside a poolside changing room with modern shower and WC facilities, as well



Floorplan produced by Woodside Photography  
Floorplan is for illustration purposes only and all measurements are approximate



20 West Street  
Dunstable  
Bedfordshire  
LU6 1SX  
01582 661112  
sales@robinsons-estates.co.uk  
<https://www.robinsons-estates.co.uk>

