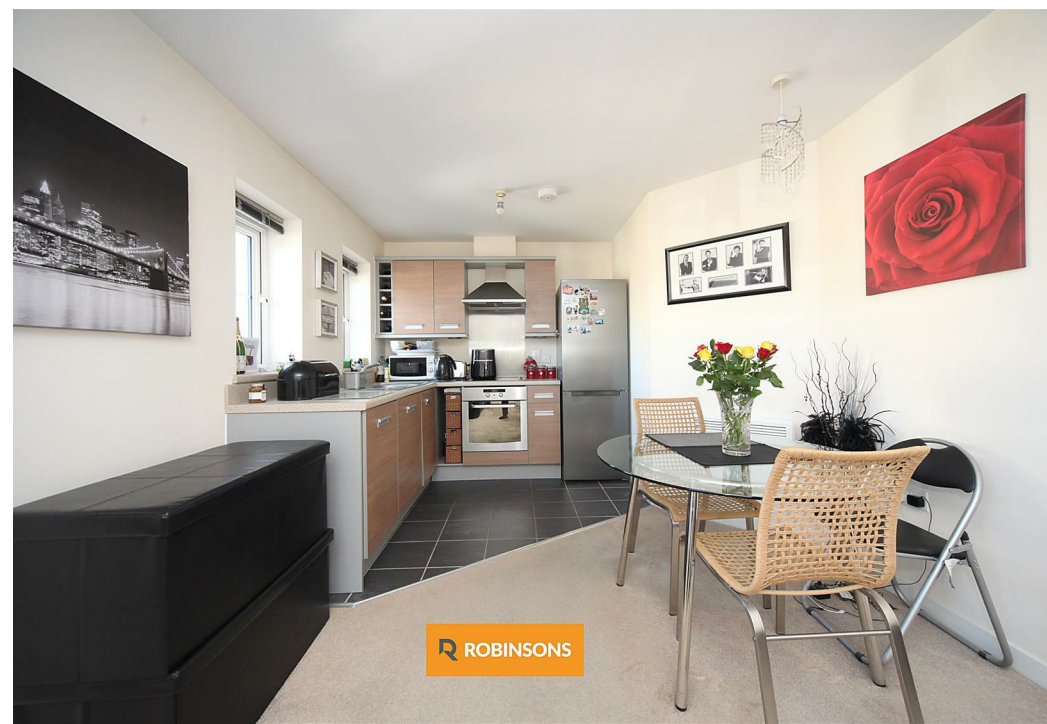
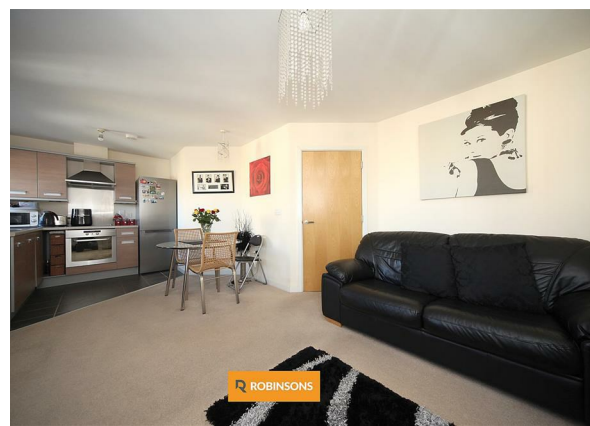
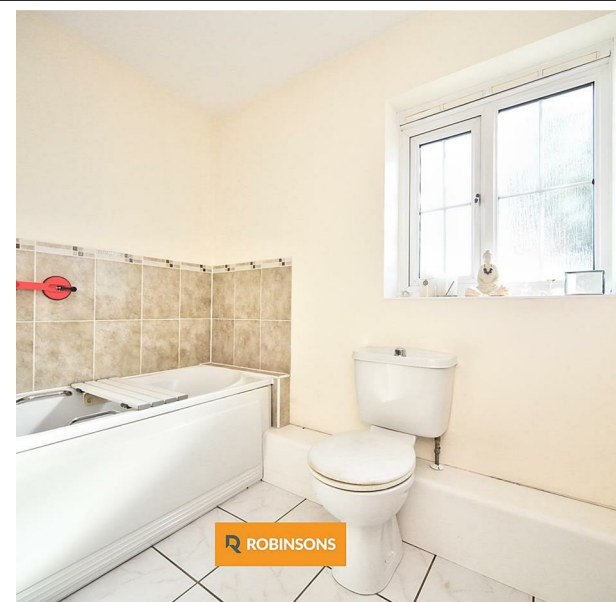
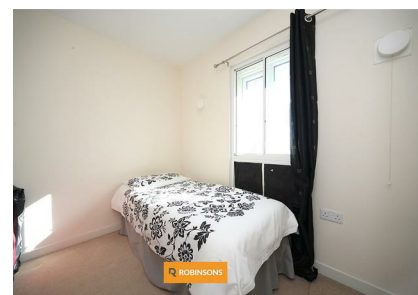
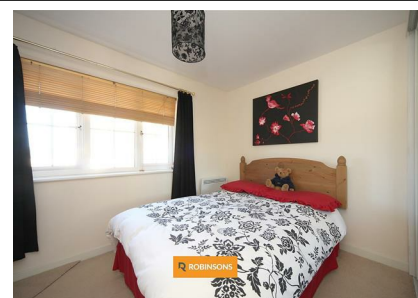


85 Russett Way, Dunstable, Bedfordshire, LU5 4GD  
£200,000

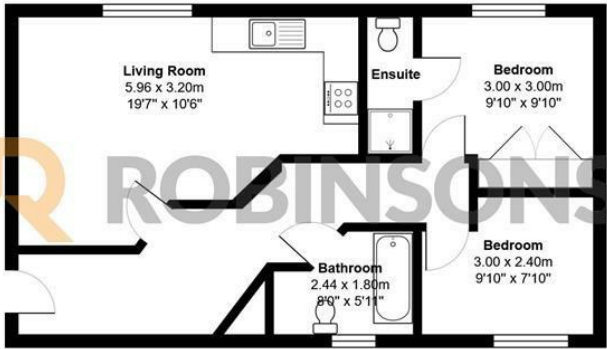
**ROBINSONS**





A UNIQUE SECOND FLOOR TWO DOUBLE BEDROOMS APARTMENT IN SMALL BLOCK OF TWO PROPERTIES WITH GARAGE IN EAST DUNSTABLE.

A two bedroom, two bathroom second floor flat in East Dunstable in small private building of just two properties with parking space and garage. ACCOMODATION FEATURES: Entrance hallway, living room open plan with kitchen, bathroom, bedroom one with built in wardrobe, en-suite shower room, bedroom two, garage and parking space. The property benefits from being in a small block of two properties and 135 years remaining on the lease.



Total Area: 55.6 m² ... 599 ft²

Floorplan produced by Woodside Photography  
Floorplan is for illustration purposes only and all measurements are approximate



20 West Street  
Dunstable  
Bedfordshire  
LU6 1SX  
01582 661112  
sales@robinsons-estates.co.uk  
<https://www.robinsons-estates.co.uk>



Energy Efficiency Rating		
	Current	Potential
Very energy efficient - lower running costs		
(92 plus) <b>A</b>		
(81-91) <b>B</b>		
(69-80) <b>C</b>		
(55-68) <b>D</b>		
(39-54) <b>E</b>		
(21-38) <b>F</b>		
(1-20) <b>G</b>		
Not energy efficient - higher running costs		
England & Wales		EU Directive 2002/91/EC 