



 ROBINSONS

Brantwood Road

Luton, LU1 1JJ

£515,000

- SPACIOUS FOUR-BEDROOM FAMILY HOME
- LARGE BEDROOMS THROUGHOUT
- STRONG POTENTIAL FOR HMO CONVERSION
- CLOSE TO UNIVERSITY, HOSPITAL & TRANSPORT LINKS
- REDUCED ENERGY BILLS – SOLAR PANELS
- TWO-STORY PROPERTY WITH EAVES STORAGE
- FAMILY BATHROOM & MODERN ENSUITE
- EXCELLENT RENTAL RETURNS
- OFF ROAD PARKING FOR ONE VEHICLE
- COMBI BOILER FITTED ONLY 2 YEARS AGO



4



2



1



ROBINSONS

Floor Plan



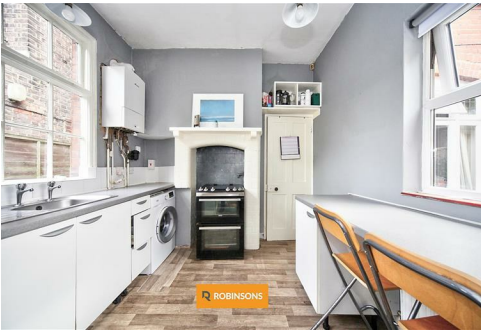
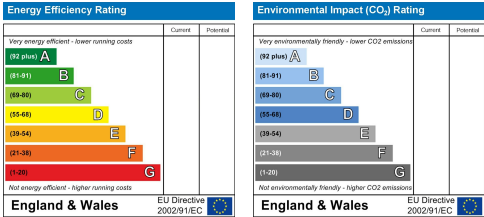
Total Area: 173.8 sq. ft. (1600 sq. ft.)

Floorplan produced by Woodside Photography
Floorplan is for illustration purposes only and all measurements are approximate

Area Map



Energy Efficiency Graph



These particulars, whilst believed to be accurate are set out as a general outline only for guidance and do not constitute any part of an offer or contract. Intending purchasers should not rely on them as statements of representation of fact, but must satisfy themselves by inspection or otherwise as to their accuracy. No person in this firms employment has the authority to make or give any representation or warranty in respect of the property.

20 West Street, Dunstable,
Bedfordshire, LU6 1SX

20 West Street, Dunstable,
Bedfordshire, LU6 1SX

robinsons-estates.co.uk
sales@robinsons-estates.co.uk