



## Cicero Crescent

Milton Keynes, MK11 4DD

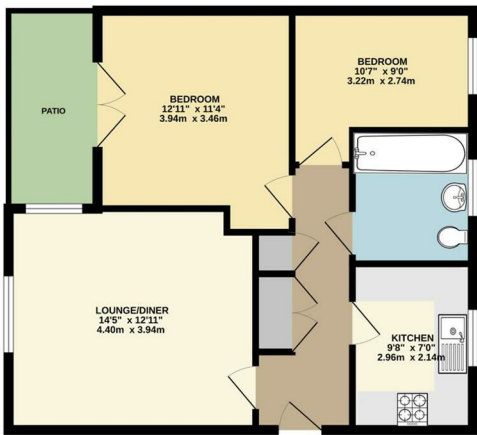
**£1,350 Per Month**

- MODERN TWO-BEDROOM APARTMENT
- MODERN GAS CENTRAL HEATING
- READY TO MOVE IN MID OCTOBER
- FULLY INTEGRATED KITCHEN APPLIANCES
- FANTASTIC TRANSPORT LINKS INCLUDING NEW BUS SERVICE
- SECOND-FLOOR WITH PRIVACY AND VIEWS
- SOUGHT AFTER FAIRFIELDS LOCATION
- FAIRFIELDS PRIMARY SCHOOL WITHIN WALKING DISTANCE
- BIKE STORAGE & BIN FACILITIES AVAILABLE
- ALLOCATED PARKING SPACES WITH VISITOR BAYS



Floor Plan

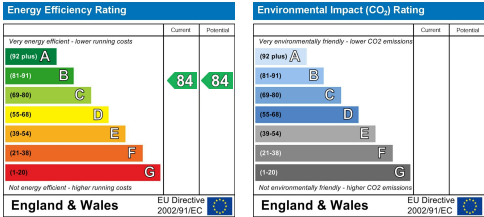
GROUND FLOOR  
603 sq.ft. (56.0 sq.m.) approx.



Area Map



Energy Efficiency Graph



These particulars, whilst believed to be accurate are set out as a general outline only for guidance and do not constitute any part of an offer or contract. Intending purchasers should not rely on them as statements of representation of fact, but must satisfy themselves by inspection or otherwise as to their accuracy. No person in this firms employment has the authority to make or give any representation or warranty in respect of the property.

20 West Street, Dunstable,  
Bedfordshire, LU6 1SX

20 West Street, Dunstable,  
Bedfordshire, LU6 1SX

robinsons-estates.co.uk  
sales@robinsons-estates.co.uk