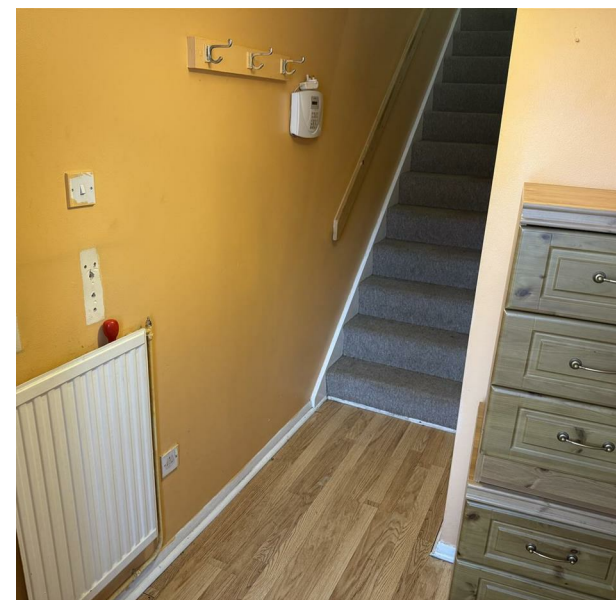
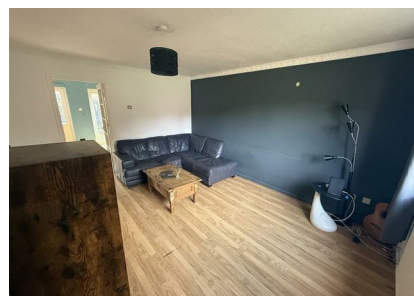


86 New Woodfield Green, Dunstable, Bedfordshire, LU5 4UN  
£275,000

**ROBINSONS**





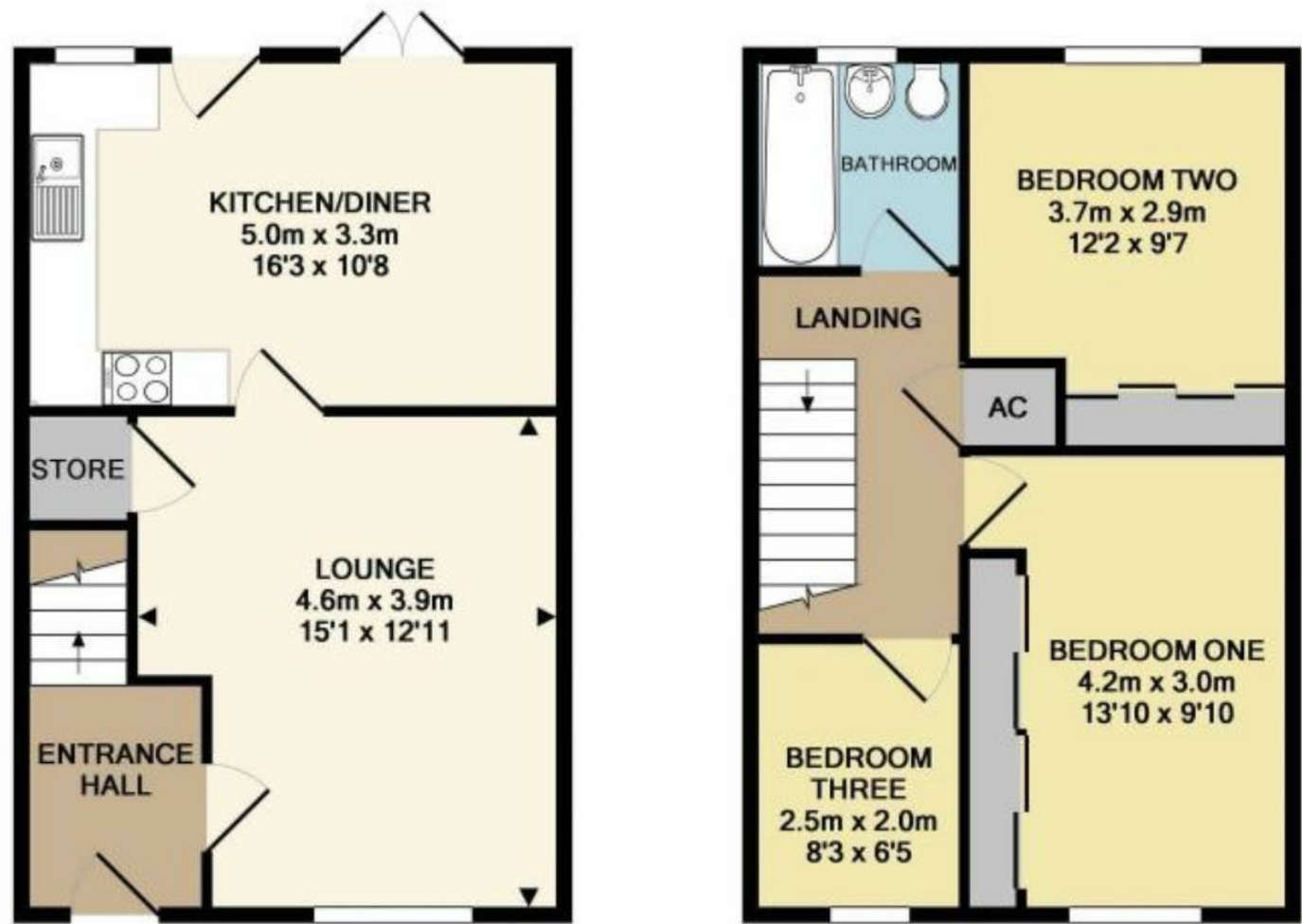
EXCITING RENOVATION PROJECT IN A QUIET CUL-DE-SAC! THREE-BEDROOM HOME WITH HUGE POTENTIAL AND A BLANK CANVAS TO CREATE YOUR DREAM PROPERTY.

Located at the end of a peaceful cul-de-sac, this three-bedroom home presents an exciting opportunity for buyers looking to add value through renovation. Currently vacant, it offers a blank canvas to create a modern, stylish home tailored to your taste.

Inside, the property features a spacious lounge and a generous kitchen/diner, perfect for family living or entertaining guests. Upstairs, there are three bedrooms and a family bathroom. Outside, you'll find a small, manageable garden, ideal for low-maintenance outdoor space.

While the home does require some updating, its potential is clear. Situated in a quiet residential area with excellent access to local amenities, schools, and transport links, it's perfectly positioned for convenience and community.

This property is ideal for first-time buyers, investors, or anyone looking to create their dream home with a personal touch.



20 West Street  
Dunstable  
Bedfordshire  
LU6 1SX  
01582 661112  
sales@robinsons-estates.co.uk  
<https://www.robinsons-estates.co.uk>



Energy Efficiency Rating		
	Current	Potential
Very energy efficient - lower running costs		
(92 plus) A		
(81-91) B		
(69-80) C		
(55-68) D	68	74
(39-54) E		
(21-38) F		
(1-20) G		
Not energy efficient - higher running costs		
England & Wales		EU Directive 2002/91/EC