



**ROBINSONS**

## Burford Walk

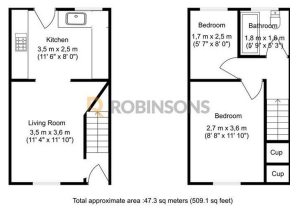
Dunstable, LU5 5RX

£250,000

- NO UPPER CHAIN
- EXCELLENT A5-M1 LINKS
- GAS CENTRAL HEATING
- GARAGE INCLUDED
- SOUGHT AFTER BURFORD WALK, HOUGHTON REGIS
- IDEAL FOR FIRST TIME BUYERS
- OFF ROAD PARKING
- DOUBLE GLAZED
- CLOSE PROMIXITY TO PLAYING FIELD
- SITUATED IN A QUIET LOCATION



Floor Plan

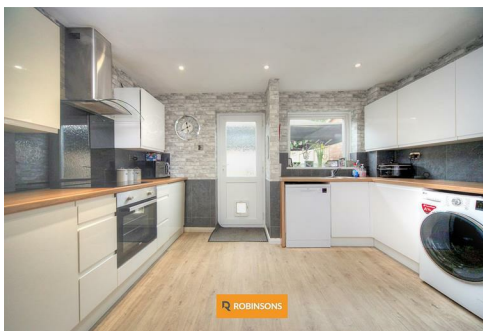
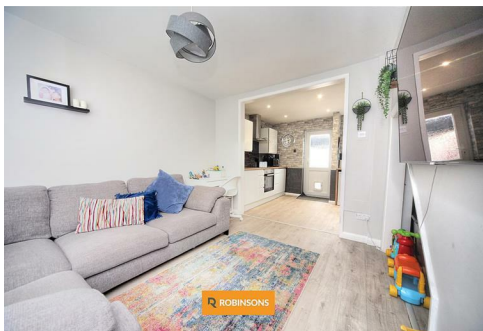
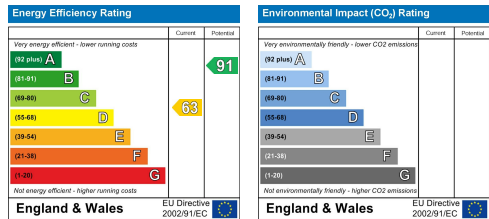


Information produced by Robinsons Photography  
Properties for sale are shown as they are and all measurements are approximate

Area Map



Energy Efficiency Graph



These particulars, whilst believed to be accurate are set out as a general outline only for guidance and do not constitute any part of an offer or contract. Intending purchasers should not rely on them as statements of representation of fact, but must satisfy themselves by inspection or otherwise as to their accuracy. No person in this firms employment has the authority to make or give any representation or warranty in respect of the property.

20 West Street, Dunstable,  
Bedfordshire, LU6 1SX

20 West Street, Dunstable,  
Bedfordshire, LU6 1SX

robinsons-estates.co.uk  
sales@robinsons-estates.co.uk