

24 Conway Close, Houghton Regis, LU5 5SE
Fixed Asking Price £90,000

ROBINSONS



**** CASH BUYERS ONLY** FIXED PRICE OF £90,000****

A STUDIO FLAT IN CUL DE SAC LOCATION IN HOUGHTON REGIS IDEALLY LOCATED FOR M1 TRANSPORTS LINKS WITH 120 YEAR LEASE.

A studio flat in need of some modernisation in quiet cul de sac of Houghton Regis. Accommodation features , living space with fitted wardrobe and fold down bed, kitchen, bathroom and utility area. The property benefits from long lease and parking to the rear.

24 Conway Close

Approximate Gross Internal Area = 25.8 sq m / 278 sq ft

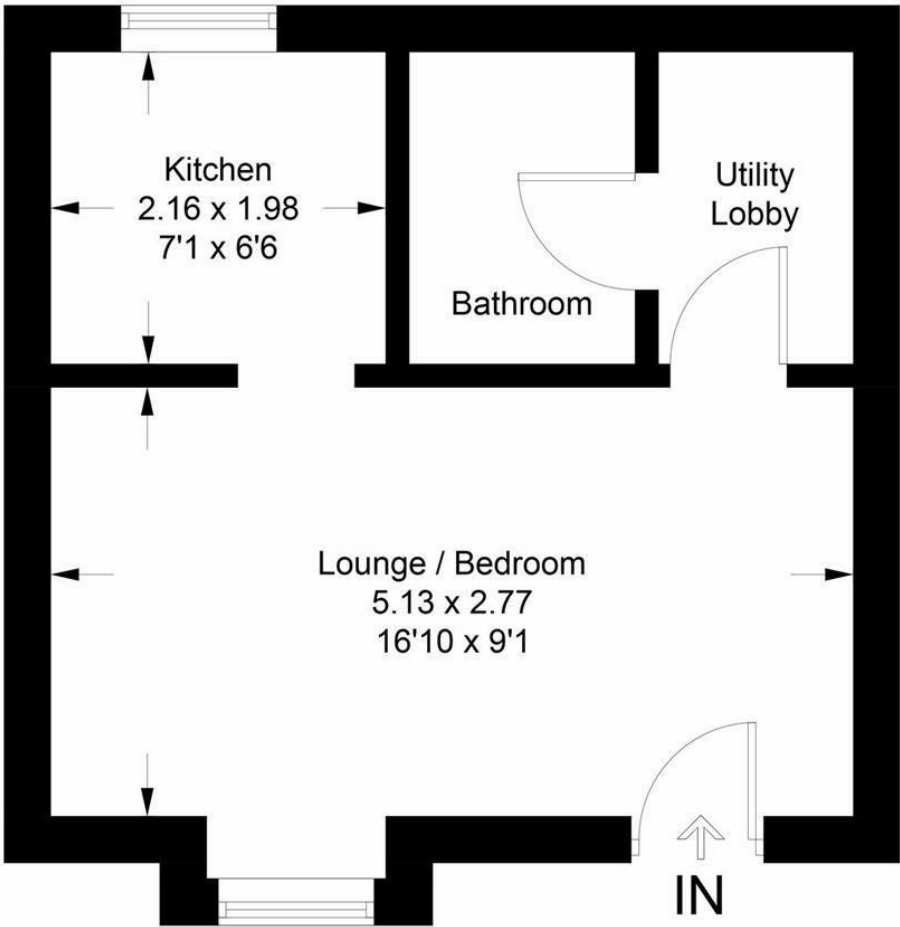


Illustration for identification purposes only, measurements are approximate, not to scale. floorplansUsketch.com © (ID939080)



20 West Street
Dunstable
Bedfordshire
LU6 1SX
01582 661112
sales@robinsons-estates.co.uk
<https://www.robinsons-estates.co.uk>

