



 ROBINSONS

Birchside

Dunstable, LU6 3EH

Offers In The Region Of £325,000

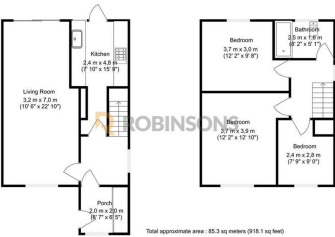
- END OF TERRACE
- SOUGHT AFTER SOUTH WEST DUNSTABLE
- DOUBLE GLAZING
- QUIET CUL-DE-SAC LOCATION
- WALKING DISTANCE TO HIGH ACHIEVING SCHOOLS
- THREE BEDROOMS
- GAS CENTRAL HEATING
- CONVENIENT ACCESS TO M1 JUNCTION 9
- SOUTH FACING GARDEN TO REAR WITH GARAGE ACCESS
- WHITE GOODS INCLUDED



ROBINSONS

C

Floor Plan

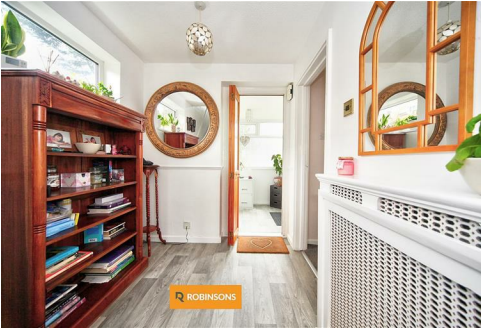
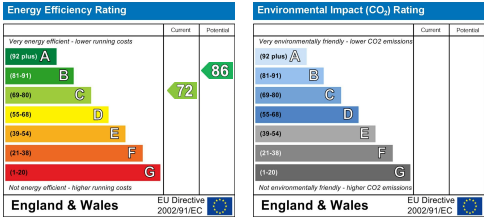


Plan created by Woodside Photography
Floorplan is for illustration purposes only and all measurements are approximate

Area Map



Energy Efficiency Graph



These particulars, whilst believed to be accurate are set out as a general outline only for guidance and do not constitute any part of an offer or contract. Intending purchasers should not rely on them as statements of representation of fact, but must satisfy themselves by inspection or otherwise as to their accuracy. No person in this firms employment has the authority to make or give any representation or warranty in respect of the property.

20 West Street, Dunstable,
Bedfordshire, LU6 1SX

20 West Street, Dunstable,
Bedfordshire, LU6 1SX

robinsons-estates.co.uk
sales@robinsons-estates.co.uk