



Conway Close

Houghton Regis, LU5 5SE

Asking Price £85,000

- NO UPPER CHAIN
- OFF ROAD PARKING AVAILABLE
- LOW SERVICE CHARGES AND GROUND RENT
- IDEALLY LOCATED FOR M1
- OPEN PLAN LIVING
- CUL-DE-SAC LOCATION
- 120 YEAR LEASE
- £750PCM RENTAL POTENTIAL
- UTILITY AREA
- IMMEDIATE EXCHANGE OF CONTRACTS AVAILABLE



1



1



1



D

Floor Plan

24 Conway Close

Approximate Gross Internal Area = 25.8 sq m / 278 sq ft

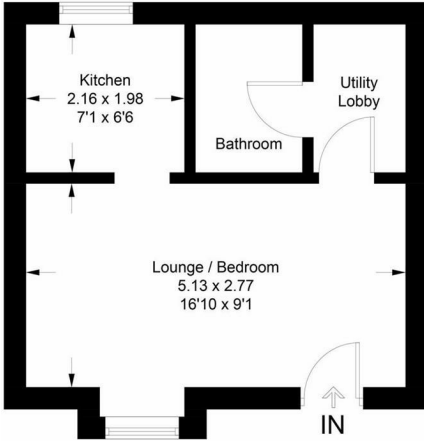
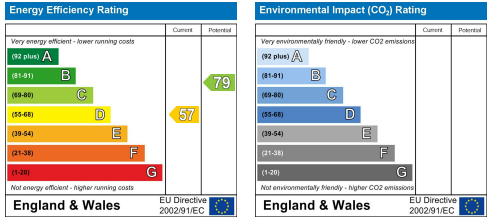


Illustration for identification purposes only, measurements are approximate, not to scale. floorplans.laketch.com © (2025/08/08)

Area Map



Energy Efficiency Graph



These particulars, whilst believed to be accurate are set out as a general outline only for guidance and do not constitute any part of an offer or contract. Intending purchasers should not rely on them as statements of representation of fact, but must satisfy themselves by inspection or otherwise as to their accuracy. No person in this firm's employment has the authority to make or give any representation or warranty in respect of the property.

20 West Street, Dunstable,
Bedfordshire, LU6 1SX

20 West Street, Dunstable,
Bedfordshire, LU6 1SX

robinsons-estates.co.uk
sales@robinsons-estates.co.uk