

Waterlow Road

Dunstable, LU6 1LX

£305,000

- NO UPPER CHAIN
- THREE BEDROOM TERRACED FAMILY HOME
- SOUTH FACING REAR GARDEN
- PERFECT FOR FIRST TIME BUYERS
- WALKING DISTANCE TO TOWN CENTRE
- FANTASTIC TRANSPORT LINKS VIA A5 & M1 MOTORWAY
- PLANTATION BLINDS & DOUBLE GLAZING THROUGHOUT
- COMBI BOILER FITTED
- EASILY ACCESSIBLE DOWNSTAIRS BATHROOM
- NORTH WEST DUNSTABLE

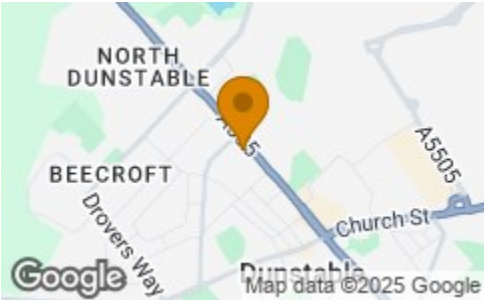


Floor Plan

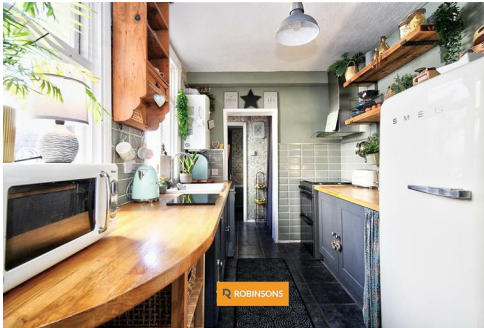
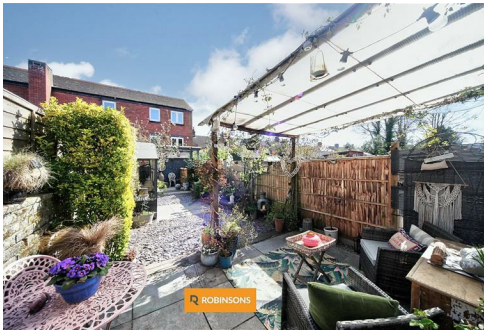
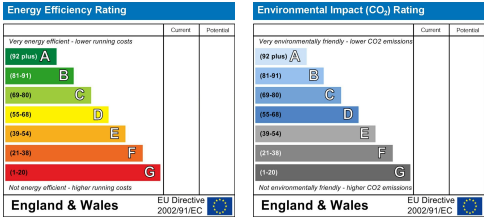


Information produced by Woodside Photography
Photographs for illustration purposes only and all measurements are approximate

Area Map



Energy Efficiency Graph



These particulars, whilst believed to be accurate are set out as a general outline only for guidance and do not constitute any part of an offer or contract. Intending purchasers should not rely on them as statements of representation of fact, but must satisfy themselves by inspection or otherwise as to their accuracy. No person in this firms employment has the authority to make or give any representation or warranty in respect of the property.

20 West Street, Dunstable,
Bedfordshire, LU6 1SX

20 West Street, Dunstable,
Bedfordshire, LU6 1SX

robinsons-estates.co.uk
sales@robinsons-estates.co.uk