



Martha Road

Derby, DE22 4PB

£215,000

- TWO BEDROOM MID-TERRACED HOME
- TWO DOUBLE BEDROOMS
- GAS CENTRAL HEATING
- UPVC DOUBLE GLAZING
- FANTASTIC FOR FIRST TIME BUYERS
- PRIVATE CUL-DE-SAC LOCATION
- SOUTH FACING REAR GARDEN
- OFF ROAD PARKING TO FRONT
- BUY2LET OPPORTUNITY - £1,200PCM
- ECCLESBOURNE CATCHMENT AREA



2



2

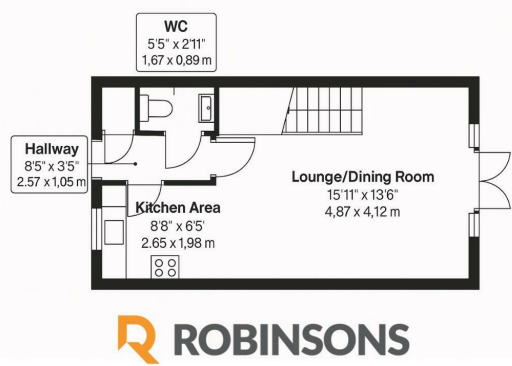


1



B

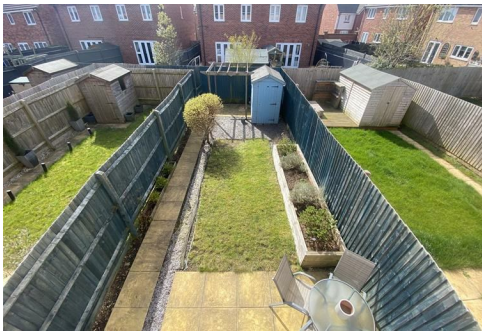
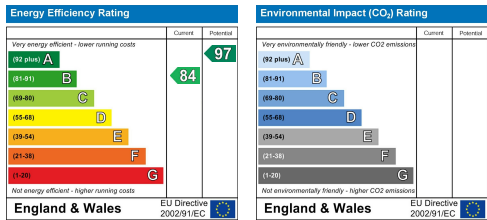
Floor Plan



Area Map



Energy Efficiency Graph



These particulars, whilst believed to be accurate are set out as a general outline only for guidance and do not constitute any part of an offer or contract. Intending purchasers should not rely on them as statements of representation of fact, but must satisfy themselves by inspection or otherwise as to their accuracy. No person in this firms employment has the authority to make or give any representation or warranty in respect of the property.

20 West Street, Dunstable,
Bedfordshire, LU6 1SX

20 West Street, Dunstable,
Bedfordshire, LU6 1SX

robinsons-estates.co.uk
sales@robinsons-estates.co.uk