



 ROBINSONS

Recreation Road

Dunstable, LU5 5JW

£285,000

- TWO LARGE DOUBLE BEDROOMS
- FANTASTIC BUY TO LET OPPORTUNITY
- DRIVEWAY FOR ONE CAR
- SCOPE FOR LARGE EXTENSION STPP
- HOME ALARM FITTED
- DOUBLE GLAZED
- OPEN PLAN LIVING / DINING ROOM
- HOUGHTON REGIS
- LARGE REAR GARDEN
- WITHIN CLOSE PROXIMITY TO M1



2



1



1



C

Floor Plan



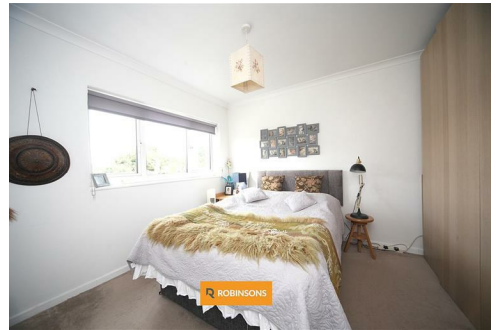
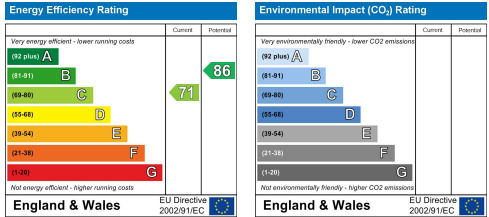
Total approximate area: 68.5 sq meters (737.3 sq feet)

Photograph produced by Riverside Photography.
Photograph for illustration purposes only and all measurements are approximate.

Area Map



Energy Efficiency Graph



These particulars, whilst believed to be accurate are set out as a general outline only for guidance and do not constitute any part of an offer or contract. Intending purchasers should not rely on them as statements of representation of fact, but must satisfy themselves by inspection or otherwise as to their accuracy. No person in this firm's employment has the authority to make or give any representation or warranty in respect of the property.

20 West Street, Dunstable,
Bedfordshire, LU6 1SX

20 West Street, Dunstable,
Bedfordshire, LU6 1SX

robinsons-estates.co.uk
sales@robinsons-estates.co.uk