



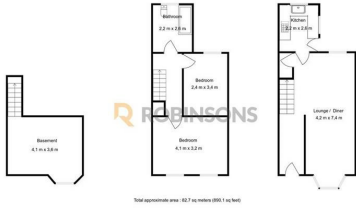
## Victoria Street

Dunstable, LU6 3BA

£310,000

- CENTRAL DUNSTABLE
- END OF TERRACE
- IDEAL FOR FIRST TIME BUYERS
- SHORT WALK TO TOWN CENTRE
- PERIOD PROPERTY
- IMMACULATE CONDITION
- TWO DOUBLE BEDROOMS
- CELLAR STORAGE SPACE
- LOW MAINTENANCE REAR GARDEN
- BUILT IN WARDROBES

# Floor Plan

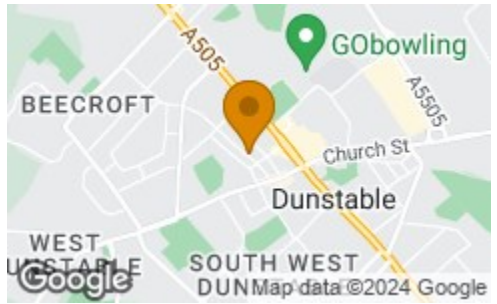


ROBINSONS

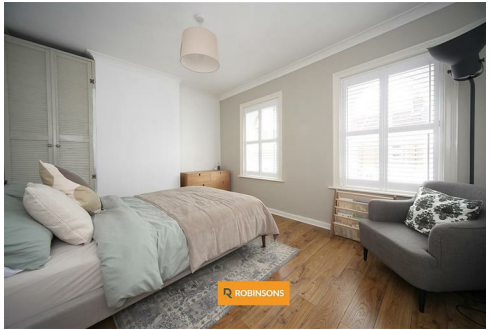
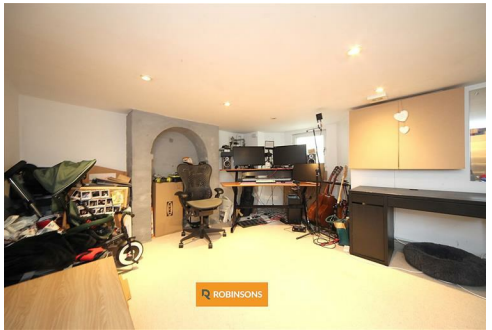
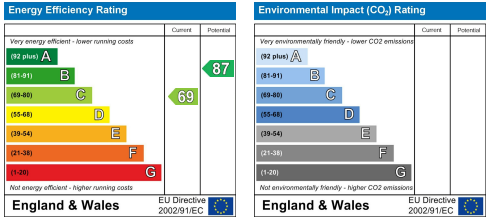
Total approximate area: 18.7 sq meters (205.1 sq feet)

Photograph produced by Westside Photography  
Photograph is for illustration purposes only and all measurements are approximate

# Area Map



# Energy Efficiency Graph



These particulars, whilst believed to be accurate are set out as a general outline only for guidance and do not constitute any part of an offer or contract. Intending purchasers should not rely on them as statements of representation of fact, but must satisfy themselves by inspection or otherwise as to their accuracy. No person in this firm's employment has the authority to make or give any representation or warranty in respect of the property.

20 West Street, Dunstable,  
Bedfordshire, LU6 1SX

20 West Street, Dunstable,  
Bedfordshire, LU6 1SX

robinsons-estates.co.uk  
sales@robinsons-estates.co.uk