



ROBINSONS

Marina Drive

Dunstable, LU6 2AH

£450,000

- AVAILABLE TO VIEW TODAY
- SPACIOUS CONSERVATORY
- PRIVATE REAR GARDEN FEATURING SUMMERHOUSE
- DECKING AT REAR OF GARDEN
- BOARDED LOFT SPACE IDEAL FOR EXTENSION
- WELL MAINTAINED SOUTH FACING REAR GARDEN
- DRIVEWAY FOR TWO CARS
- SOUGHT AFTER WEST DUNSTABLE LOCATION
- OPEN PLAN KITCHEN / DINER
- NEW BOILER



3



1



1



C

ROBINSONS

Floor Plan

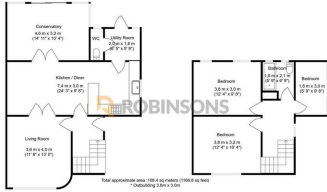
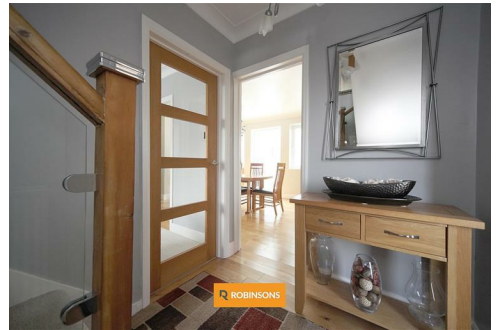
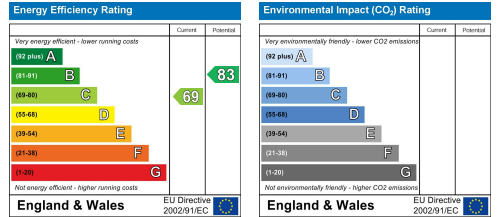


Illustration produced by Woodside Photography. Respective to the dimensions proposed using all of measurements as appropriate.

Area Map



Energy Efficiency Graph



These particulars, whilst believed to be accurate are set out as a general outline only for guidance and do not constitute any part of an offer or contract. Intending purchasers should not rely on them as statements of representation of fact, but must satisfy themselves by inspection or otherwise as to their accuracy. No person in this firm's employment has the authority to make or give any representation or warranty in respect of the property.

20 West Street, Dunstable,
Bedfordshire, LU6 1SX

20 West Street, Dunstable,
Bedfordshire, LU6 1SX

robinsons-estates.co.uk
sales@robinsons-estates.co.uk