



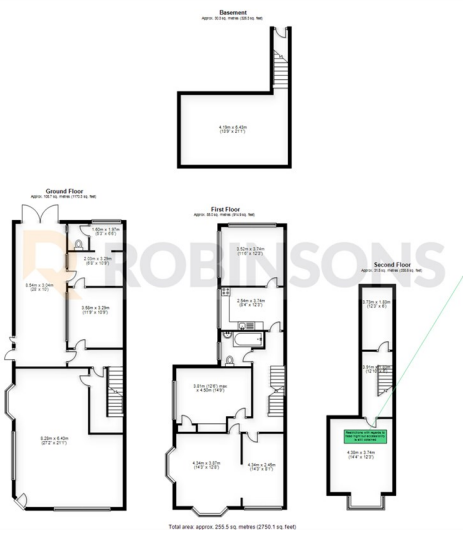
Union Street

Dunstable, LU6 1EY

Best Offers Around £400,000

- RESIDENTIAL | COMMERCIAL OPPORTUNITY
- AMPLIFIED PARKING AT REAR
- FIRST & SECOND FLOOR RESIDENTIAL
- VACANT AND NO UPWARD CHAIN
- ACCOMMODATION ARRANGED OVER FOUR LEVELS
- MIXED RESIDENTIAL & COMMERCIAL
- GROUND FLOOR COMMERCIAL
- GREAT LOCATION FOR DEVELOPMENT (stpc)
- 255.SQM APPROX
- GOOD CONECTION FOR A5 AND M1 MOTORWAY

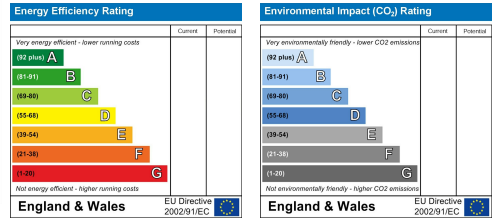
Floor Plan



Area Map



Energy Efficiency Graph



These particulars, whilst believed to be accurate are set out as a general outline only for guidance and do not constitute any part of an offer or contract. Intending purchasers should not rely on them as statements of representation of fact, but must satisfy themselves by inspection or otherwise as to their accuracy. No person in this firm's employment has the authority to make or give any representation or warranty in respect of the property.

20 West Street, Dunstable,
Bedfordshire, LU6 1SX

20 West Street, Dunstable,
Bedfordshire, LU6 1SX

robinsons-estates.co.uk
sales@robinsons-estates.co.uk