



Pipers Croft

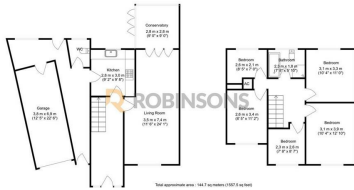
Dunstable, LU6 3JZ

£525,000

- SEMI DETACHED FAMILY HOME
- DESIRABLE SOUTH WEST DUNSTABLE
- SPACIOUS DRIVEWAY FOR MULTIPLE CARS
- WELL MAINTAINED REAR GARDEN
- CONSERVATORY
- UTILITY ROOM
- STUDY / OFFICE SPACE
- ELECTRIC GARAGE DOOR
- DOUBLE GLAZED
- GAS CENTRAL HEATING

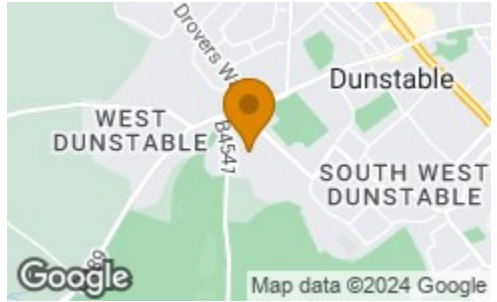
 5  2  1   C

Floor Plan

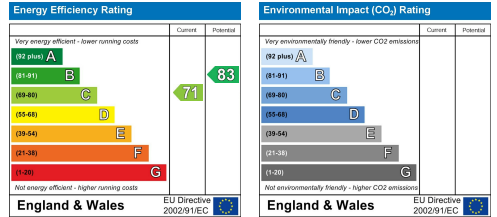


Robinsons produced by iStockphoto
Floorplan is for illustration purposes only and all measurements are approximate

Area Map



Energy Efficiency Graph



These particulars, whilst believed to be accurate are set out as a general outline only for guidance and do not constitute any part of an offer or contract. Intending purchasers should not rely on them as statements of representation of fact, but must satisfy themselves by inspection or otherwise as to their accuracy. No person in this firm's employment has the authority to make or give any representation or warranty in respect of the property.

20 West Street, Dunstable,
Bedfordshire, LU6 1SX

20 West Street, Dunstable,
Bedfordshire, LU6 1SX

robinsons-estates.co.uk
sales@robinsons-estates.co.uk