

**Latimer Road
Teddington
TW11 8QA**

£2,600 PCM

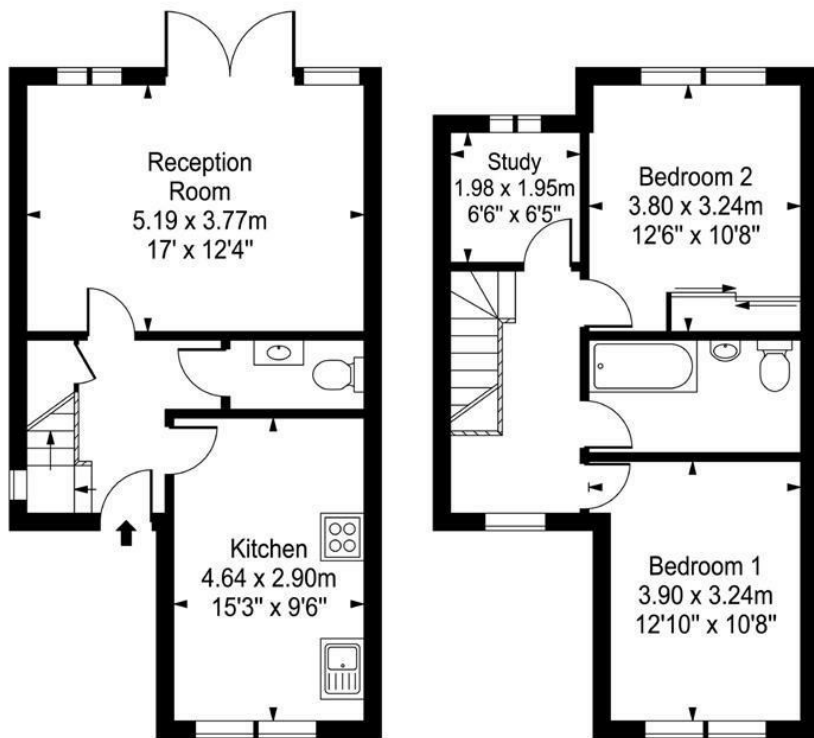
ChaseBuchanan



Latimer Road

Approx. Gross Internal Area

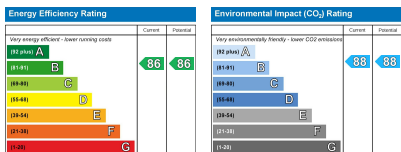
87.12 Sq M - 938 Sq Ft



Ground Floor

First Floor

Every attempt is made to assure accuracy, however measurements are approximate and for illustrative purposes only. Not to scale.



Care has been taken in the preparation of these particulars, however, their accuracy is not guaranteed and they do not form part of any contract. Measurements stated must be considered maximum.

- Great location
- Modern throughout
- Off street parking
- Two bedroom house
- Additional study room
- South facing garden

This simply stunning modern two bedroom plus a study family house located on a quiet road only moments from Teddington high street and train station.

On the ground floor you have a modern eat in kitchen with appliances, integrated fridge freezer, dishwasher and four point induction hob, bright versatile reception room with wooden floors and double doors leading onto a beautiful private south facing garden, perfect for those summer evenings and separate WC.

To the first floor the property offers two double bedrooms, an additional study, and a modern family bathroom including separate shower.

Further benefits include underfloor heating throughout on the ground floor and off street parking.

Chase Buchanan are bonded members of ARLA PropertyMark

For more information or to book a viewing, please contact:

020 8977 1066

ChaseBuchanan

43 High Street, Teddington, TW11 8HB