

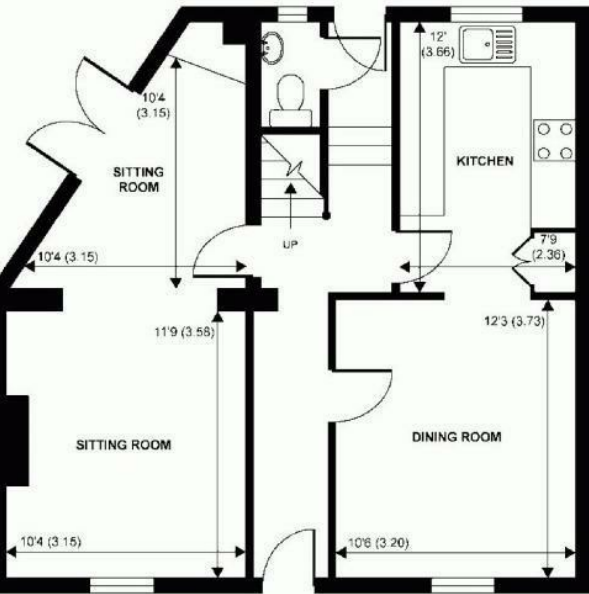
**Park Road
Hampton Wick
KT1 4AS**

£3,995 PCM

ChaseBuchanan



NOT TO SCALE



GROUND FLOOR
abt 640 SQFT (EXTERNAL)



FIRST FLOOR
abt 637 SQFT (EXTERNAL)

TOTAL APPROX abt 1277 SQFT (EXTERNAL)

Energy Efficiency Rating		Environmental Impact (CO ₂) Rating	
Current	Target	Current	Target
Very energy efficient - lower running costs		Very environmentally friendly - lower CO ₂ emissions	
A		A	
B		B	
C		C	
D		D	
E		E	
F		F	
G		G	
	S4		

Care has been taken in the preparation of these particulars, however, their accuracy is not guaranteed and they do not form part of any contract. Measurements stated must be considered maximum.

- Great location
- Exudes charm
- Two reception rooms
- Three bedrooms
- Bathroom and downstairs WC
- Private garden
- Private parking at additional cost
- Council tax band - F

Welcome to this charming three-bedroom period cottage located on Park Road in the desirable area of Hampton Wick. This lovely terraced house boasts character features throughout, making it a truly unique and inviting home.

As you step inside, you are greeted by two reception rooms that offer ample space for entertaining or relaxing with family. The property comprises three well-proportioned bedrooms, providing plenty of room for a growing family or those in need of a home office.

The house features a bathroom and downstairs WC for your convenience, ensuring that the morning rush is a breeze. Additionally, the private rear garden offers a tranquil outdoor space where you can unwind and enjoy some fresh air.

Parking is always a premium in this area, but worry not as this property comes with private parking at an additional cost.

Don't miss the opportunity to make this delightful period cottage your new home. Contact us today to arrange a viewing and experience the charm and warmth this property has to offer.

Chase Buchanan are bonded members of ARLA PropertyMark.

For more information or to book a viewing, please contact:

020 8977 1066

ChaseBuchanan

43 High Street, Teddington, TW11 8HB