

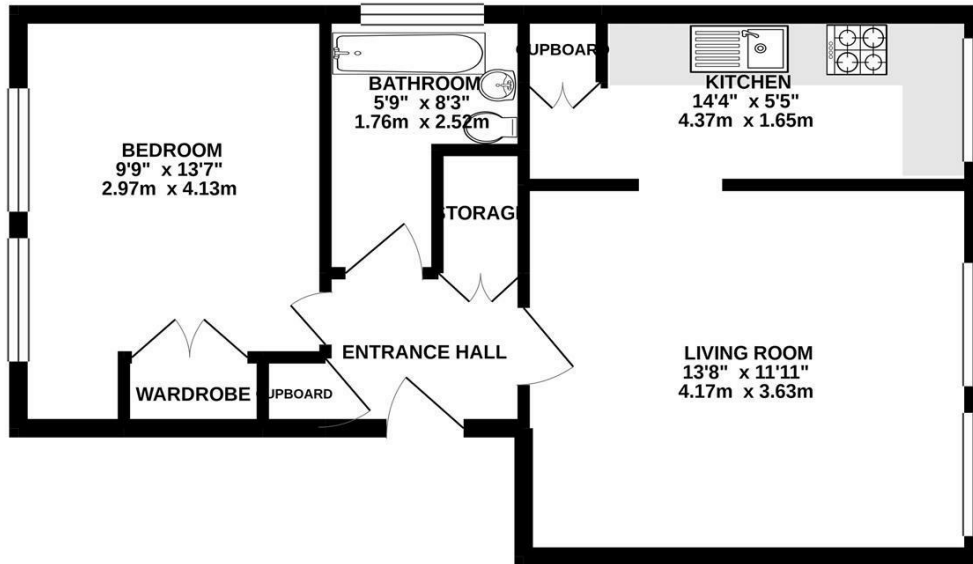
**Harrowdene Gardens  
Teddington  
TW11 0DL**

£1,395 PCM

**ChaseBuchanan**

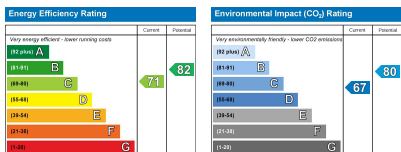


**FIRST FLOOR**  
462 sq.ft. (43.0 sq.m.) approx.



TOTAL FLOOR AREA: 462 sq.ft. (43.0 sq.m.) approx.

Whilst every attempt has been made to ensure the accuracy of the floorplan contained here, measurements of doors, windows, rooms and any other items are approximate and no responsibility is taken for any error, omission or mis-statement. This plan is for illustrative purposes only and should be used as such by any prospective purchaser. The services, systems and appliances shown have not been tested and no guarantee as to their operability or efficiency can be given.  
Made with Metropix ©2021



Care has been taken in the preparation of these particulars, however, their accuracy is not guaranteed and they do not form part of any contract. Measurements stated must be considered maximum.

- Great location
- Bright and airy
- Well kept communal gardens
- Spacious living room
- Close to Teddington mainline station
- Council tax band - C

Move straight in, unpack your belongings and put your feet up, in this lovely home. Nestled in a popular development in Teddington, opposite Bushy Park, is this attractive, light and airy one double bedroom apartment. Beautifully presented throughout, this home offers spacious living accommodation with an impressive sized lounge, fully fitted kitchen and a modern bathroom.

Positioned within an easy walking distance of Teddington mainline station and Teddington High Street, with its abundance of shops, bars and restaurants this property ticks a lot of boxes!

Chase Buchanan are bonded members of ARLA PropertyMark.

For more information or to book a viewing, please contact:

**020 8977 1066**

**ChaseBuchanan**

43 High Street, Teddington, TW11 8HB