



ChaseBuchanan

Waldegrave Road, Teddington

Asking Price £965,000

- Viewings accompanied by Chase Buchanan
- Characterful Victorian Villa
- 2 Bedrooms
- Over 100ft West facing Garden
- Potential to Extend and create Third Bedroom
- Located in the heart of Teddington

A delightful two-bedroom Victorian Villa of townscape merit, featuring an incredible 111 ft. garden, with the potential to easily convert to three bedrooms and situated moments from Teddington High Street.

This charming mid-terrace home benefits from numerous period features and boasts a spacious layout, featuring a formal double reception room (over 25 ft.) beautifully illuminated through a wide splay bay window. To the rear is a characterful dining room with a fireplace and wood-burning stove leading to a well-equipped kitchen. Upstairs are two generously sized bedrooms, with the huge master bedroom to the fore often converted to two bedrooms in adjacent neighboring properties. The bedrooms are served by a large family bathroom and an additional W.C.

One of the standout features of this home is the amazing outdoor space. The front garden provides a welcoming entrance, and the rear garden is a true oasis, over 111 ft in length with a beautiful open outlook, perfect for gardening enthusiasts, or simply enjoying some peace and quiet.

There is also significant potential to extend, offering a fantastic opportunity to add value and create additional living space tailored to your needs.

Located moments from the heart of Teddington, this home is within easy reach of excellent local schools, the River Thames, Royal Bushy Park, and the vibrant Teddington High Street, with its array of shops, cafes, and restaurants. Excellent transport links ensure convenient access to Central London and surrounding areas.

This property has an energy performance rating of B







For more information or to book a viewing, please contact:

020 8977 1166

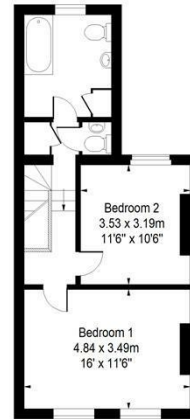
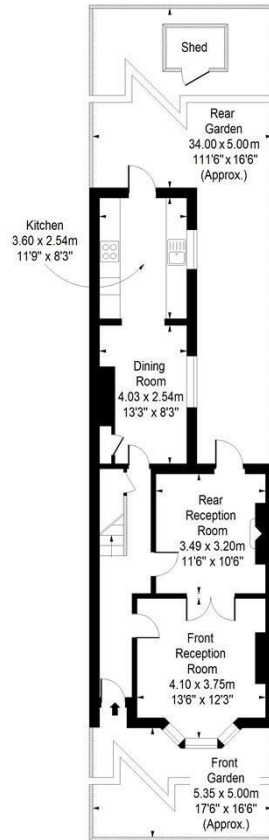
Chase Buchanan Teddington Sales
43 High Street, Teddington, TW11 8HB

ChaseBuchanan

Waldegrave Road

Approx. Gross Internal Area
102 Sq M - 1098 Sq Ft

ChaseBuchanan



Every attempt is made to assure accuracy, however measurements are approximate and for illustrative purposes only. not to scale floor plan by www.frameworkphotos.co.uk

Care has been taken in the preparation of these particulars, however, their accuracy is not guaranteed and they do not form part of any contract. Measurements stated must be considered maximum.



ChaseBuchanan