

**Church Road
Teddington
TW11 8EY**

£1,695 PCM

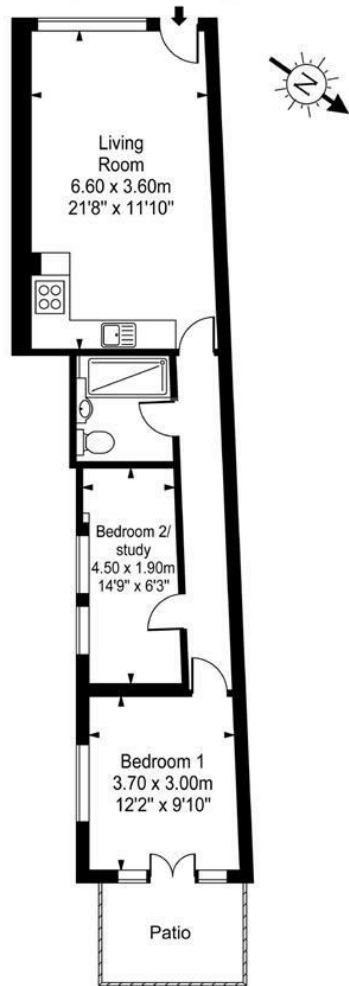
ChaseBuchanan



Church Road

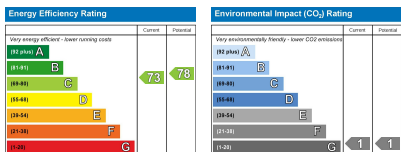
Approx. Gross Internal Area

56.85 Sq M - 612 Sq Ft



Ground Floor

Every attempt is made to assure accuracy, however measurements are approximate and for illustrative purposes only. Not to scale.



Care has been taken in the preparation of these particulars, however, their accuracy is not guaranteed and they do not form part of any contract. Measurements stated must be considered maximum.

- Central location
- Ground floor
- Open plan kitchen/living room
- Two bedrooms
- Private patio
- Council tax band - C

A modern two bedroom ground floor apartment in the heart of Teddington!

This bright and airy apartment has a fully equipped open plan kitchen and living area, modern shower room, two double bedrooms and the added addition of a private patio.

Located on a quiet road just a short stroll to Teddington High Street and station with direct links into London Waterloo.

Chase Buchanan are bonded members of ARLA PropertyMark.

For more information or to book a viewing, please contact:

020 8977 1066

ChaseBuchanan

43 High Street, Teddington, TW11 8HB