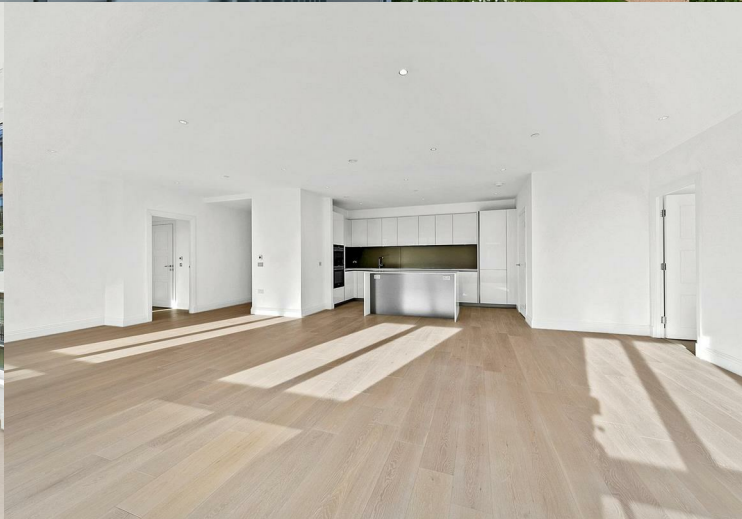


**Pinewood Gardens  
Teddington  
TW11 9FJ**

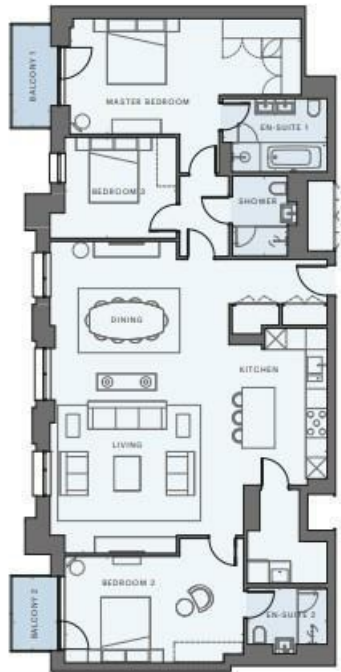
£4,200 PCM

**ChaseBuchanan**



3 BEDROOMS

158 SQ M / 1701 SQ FT



APARTMENT LOCATOR



FLOOR 6
FLOOR 5
FLOOR 4
FLOOR 3
FLOOR 2
FLOOR 1
GROUND FLOOR

TOTAL APARTMENT AREA	158 SQ M	1701 SQ FT	TOTAL BALCONY AREA	7 SQ M	75 SQ FT
LIVING / DINING / KITCHEN	8.46 M X 9.53 M	27'9" X 31'3"	SHOWER	2.44 M X 1.68 M	8'0" X 5'6"
MASTER BEDROOM	7.06 M X 3.53 M	23'2" X 11'7"	EN-SUITE 2	2.02 M X 2.44 M	6'8" X 8'0"
BEDROOM 2	5.46 M X 3.25 M	17'11" X 10'8"	BALCONY 1	3.14 M X 1.19 M	10'4" X 3'11"
BEDROOM 3	3.42 M X 3.09 M	11'3" X 10'2"	BALCONY 2	2.26 M X 1.41 M	7'5" X 4'7"
EN-SUITE 1	2.24 M X 3.19 M	7'4" X 10'6"			

Energy Efficiency Rating		Environmental Impact (CO <sub>2</sub> ) Rating	
Current	Target	Current	Target
86	86		

- A selection of luxury three bedroom apartments
- Impressive living area
- Secure parking
- Idyllic riverside location
- Brand new apartments
- Council tax band E

A selection of luxury, brand new three bedroom apartments, Located on the fifth floor on this riverside development in the desirable location of Teddington. Immaculately presented to the highest standard, this property offers a luxurious and contemporary living experience.

Upon entering, you'll be greeted by a spacious and bright open-plan living area, perfect for entertaining guests. The stylishly designed kitchen boasts modern appliances, sleek countertops, and ample storage space. The property features three generously sized bedrooms. Two bedrooms have en-suite showers, there is also a luxury family bathroom.

In addition to the pristine interior, this development offers convenient secure underground parking.

Situated in the sought-after area of Teddington, residents will have access to a variety of amenities, including shops, restaurants, and leisure facilities. The location also provides excellent transport links, allowing for easy commutes and convenient access to surrounding areas.

Don't miss out on the opportunity to call this brand new riverside development your home. Immerse yourself in luxury and convenience by scheduling a viewing today.

Chase Buchanan are bonded members of ARLA Propertymark.

For more information or to book a viewing, please contact:

020 8977 1066

**ChaseBuchanan**

43 High Street, Teddington, TW11 8HB

Care has been taken in the preparation of these particulars, however, their accuracy is not guaranteed and they do not form part of any contract. Measurements stated must be considered maximum.