



29

ChaseBuchanan

Windsor Road, Teddington

Asking Price £1,200,000

- Viewings accompanied by Chase Buchanan
- Elegant Victorian Semi-Detached House
- Four Double Bedrooms
- Stunning Double Reception Room
- En-Suite Master Bedroom
- South-Facing Garden
- Quiet Residential Road
- Close to Teddington High Street

A stunning four-bedroom Semi-detached Victorian family home located on a quiet, sought-after residential road, with a delightful south-facing garden.

Beautifully presented, the house has been sympathetically extended whilst maintaining numerous period features, including high ceilings, intricate coving, ceiling roses, and large sash windows. The elegant double reception room is a fabulous entertaining space, illuminated by a large splay bay window, enhanced with plantation shutters, and featuring a lovely marble fireplace with bespoke alcove cupboards to the chimney recesses.

To the rear, the kitchen has been tastefully extended to the full width and is flooded with light through large Velux windows in the vaulted ceiling and French doors to the garden. The kitchen offers ample storage cupboards and integrated appliances and features quartz worktops and a breakfast bar. The ground floor also benefits from a downstairs W.C. and under-stairs storage.

The first floor boasts three double bedrooms, elegantly decorated, with the two larger bedrooms featuring bespoke alcove storage. A modern family bathroom serves this floor. The top floor flows naturally in keeping with the house and hosts the Master suite with a Juliet balcony, eves storage, and a stylish en-suite shower room.

The garden is a gem, South facing and well maintained, with York stone paving, artificial lawn, and mature trees and hedging.

Teddington High Street is close by with many boutique shops, restaurants and local amenities. Royal Bushy Park and the River Thames are on the doorstep. Transport

This property has an energy performance rating of D







For more information or to book a viewing, please contact:

020 8977 1166

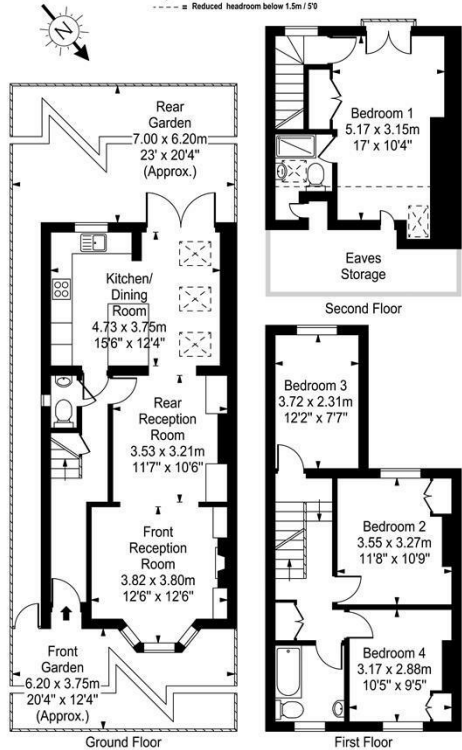
Chase Buchanan Teddington Sales
43 High Street, Teddington, TW11 8HB

ChaseBuchanan

Windsor Road

Approx. Gross Internal Area
 119 Sq M - 1281 Sq Ft
 (Excluding Eaves Storage)

Key :
 - - - - = Reduced headroom below 1.5m / 5'



Every attempt is made to assure accuracy, however measurements are approximate and for illustrative purposes only. Not to scale.
 Floor plan by www.frameworkphotos.co.uk

Care has been taken in the preparation of these particulars, however, their accuracy is not guaranteed and they do not form part of any contract.
 Measurements stated must be considered maximum.



ChaseBuchanan