

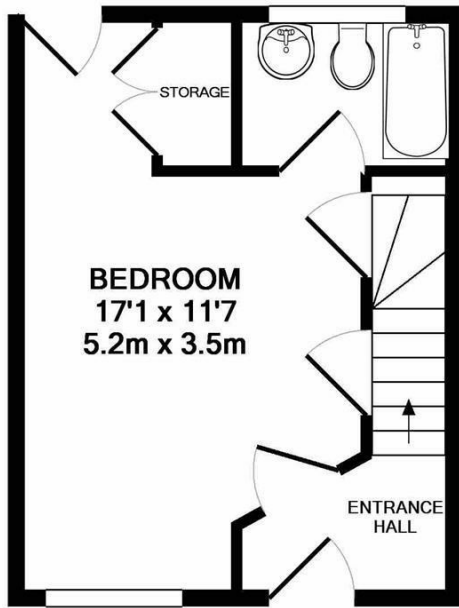
Shacklegate Lane  
Teddington  
TW11 8SH

£1,500 PCM

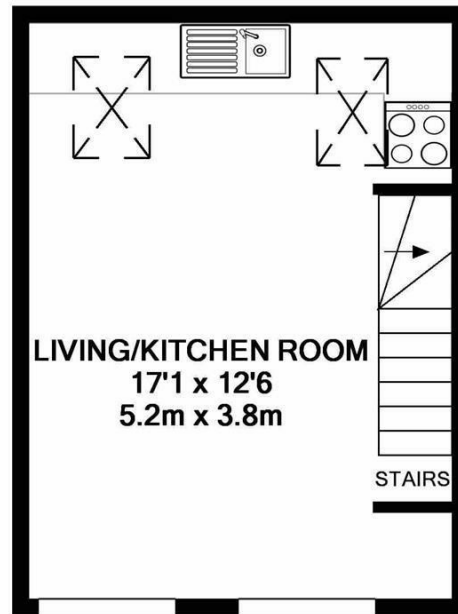
ChaseBuchanan







GROUND FLOOR  
APPROX. FLOOR  
AREA 213 SQ.FT.  
(19.8 SQ.M.)



1ST FLOOR  
APPROX. FLOOR  
AREA 217 SQ.FT.  
(20.2 SQ.M.)

TOTAL APPROX. FLOOR AREA 430 SQ.FT. (40.0 SQ.M.)  
Made with Metropix ©2018

- Unique one bedroom house
- Living area with open ceiling
- Wooden flooring throughout
- Sky lights
- Private garden
- Driveway parking

Move straight in, unpack your belongings and put your feet up in this lovely house.

This unique home offers a spacious and bright living room with an open ceiling and the addition of skylights. You will find a good size bedroom with fitted wardrobes and ample hidden storage modern bathroom.

With a private garden and off street driveway parking, this property will tick a lot of boxes. Located in a popular road just off the high street, close to the many bars, restaurants and shops with Fulwell and Strawberry Hill station only a few moments away.

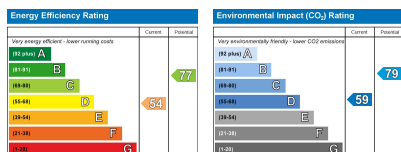
Chase Buchanan are bonded members of ARLA PropertyMark.

For more information or to book a viewing, please contact:

020 8977 1066

**ChaseBuchanan**

43 High Street, Teddington, TW11 8HB



Care has been taken in the preparation of these particulars, however, their accuracy is not guaranteed and they do not form part of any contract. Measurements stated must be considered maximum.