

Connaught Road
Teddington
TW11 0QQ

£895,000

ChaseBuchanan

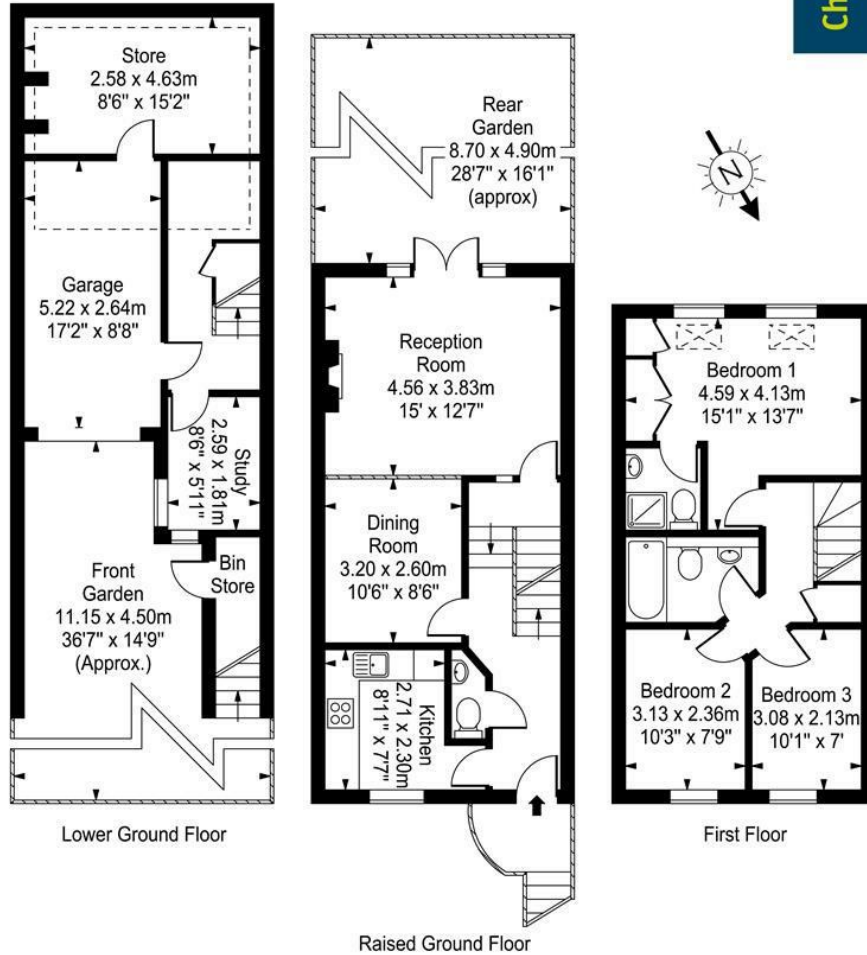


Connaught Road

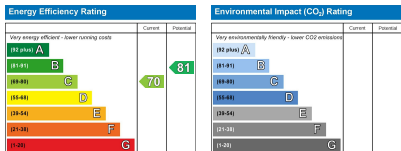
Approx. Gross Internal Area
129 Sq M - 1389 Sq Ft
(Including Garage & Excluding Bin Store)

ChaseBuchanan

Key :
- - - - = Reduced headroom below 1.5m / 5'0"



Every attempt is made to assure accuracy, however measurements are approximate and for illustrative purposes only. Not to scale.
Floor plan by www.frameworkphotos.co.uk



- Rarely available family home
- Two bathrooms
- Own drive to garage
- South facing garden
- Three bedrooms
- No onward chain
- Study room
- Close to many popular Schools

This is a wonderful three-bedroom family home situated in a popular residential road within easy reach of Royal Bushy Park and Fulwell train station. Inside there is a kitchen with appliances at the front of the property, dining room, plus living room at the rear with access onto the garden. Downstairs there is a study room and access into the garage. On the top floor there are three bedrooms one with en suite and separate family bathroom.

Close by there are many boutique shops, restaurants and the amenities of Teddington and Twickenham, including the David Lloyd leisure centre, Hampton open air pool, and The prestigious Lensbury Club. Locally there are excellent transport links, with Teddington train station offering direct access into London Waterloo and regular buses into both Kingston and Richmond town centres. Schools are sought after in the area and this property is within close proximity to some of the area's finest education facilities.

For more information or to book a viewing, please contact:

020 8977 1166

ChaseBuchanan

43 High Street, Teddington, TW11 8HB