

**Widewing Close
Teddington
TW11 0DY**

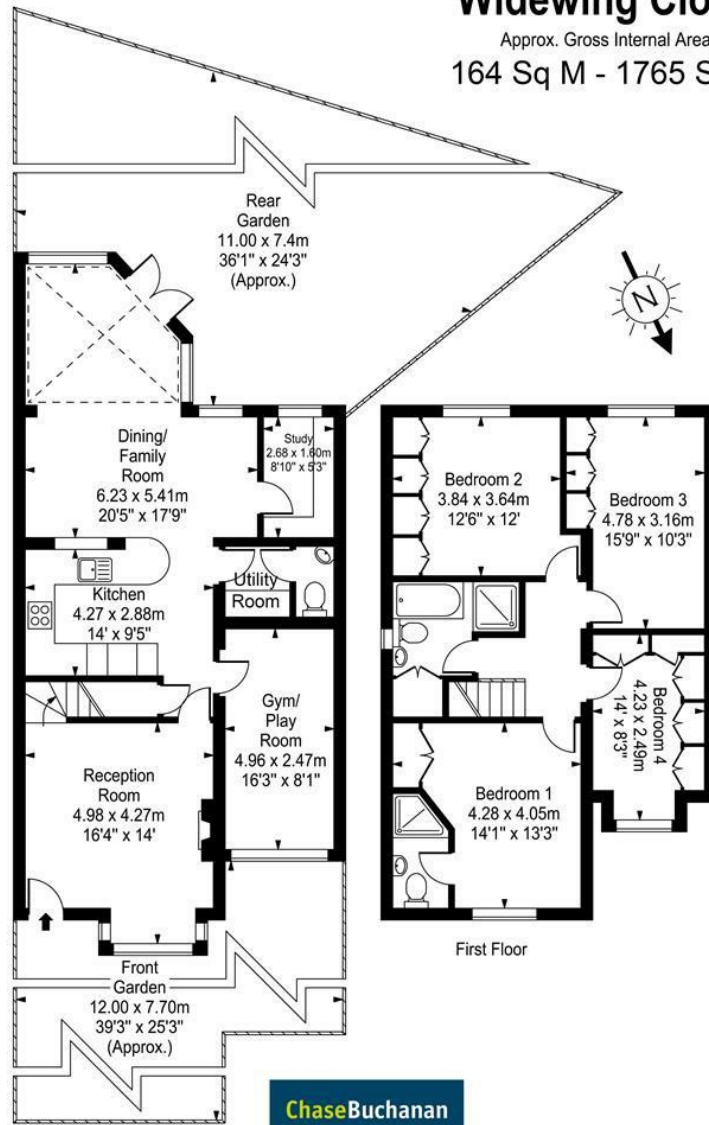
Asking Price £1,295,000

ChaseBuchanan

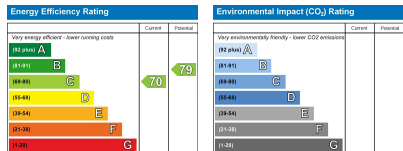


Widening Close

Approx. Gross Internal Area
164 Sq M - 1765 Sq Ft



Every attempt is made to assure accuracy, however measurements are approximate and for illustrative purposes only. Not to scale.
Floor plan by www.frameworkphotos.co.uk



Care has been taken in the preparation of these particulars, however, their accuracy is not guaranteed and they do not form part of any contract. Measurements stated must be considered maximum.

- Viewings accompanied by Chase Buchanan
- Four bedrooms
- Private development
- Detached family home
- Two bathrooms
- Parking for three cars

A wonderful four-bedroom detached family residence located within moments of Royal Bushy Park and Kingston town centre. This charming home is situated within a private development and comes with ample parking at the front of the house.

Internally there are good-sized rooms and modern fittings, plus the benefit of having a southwest facing garden at the rear. Downstairs there is a large lounge with a bay window to the front, a kitchen family room at the rear, gym/playroom and utility room, W.C., and study. Upstairs there are four bedrooms with fitted wardrobes and en suite shower room to the master bedroom. There is also a family bathroom with a separate shower cubicle. The garden has been carefully designed with shrub borders and a seating area making it ideal for dining al fresco during the summer months.

Close by there are many boutique shops, restaurants, and the amenities of Kingston and Teddington, including fantastic shopping facilities and Kingston riverside. Locally there are excellent transport links, with Hampton Wick train station offering direct access to London Waterloo and regular buses into both Kingston and Richmond town centres.

For more information or to book a viewing, please contact:

020 8977 1166

ChaseBuchanan

43 High Street, Teddington, TW11 8HB