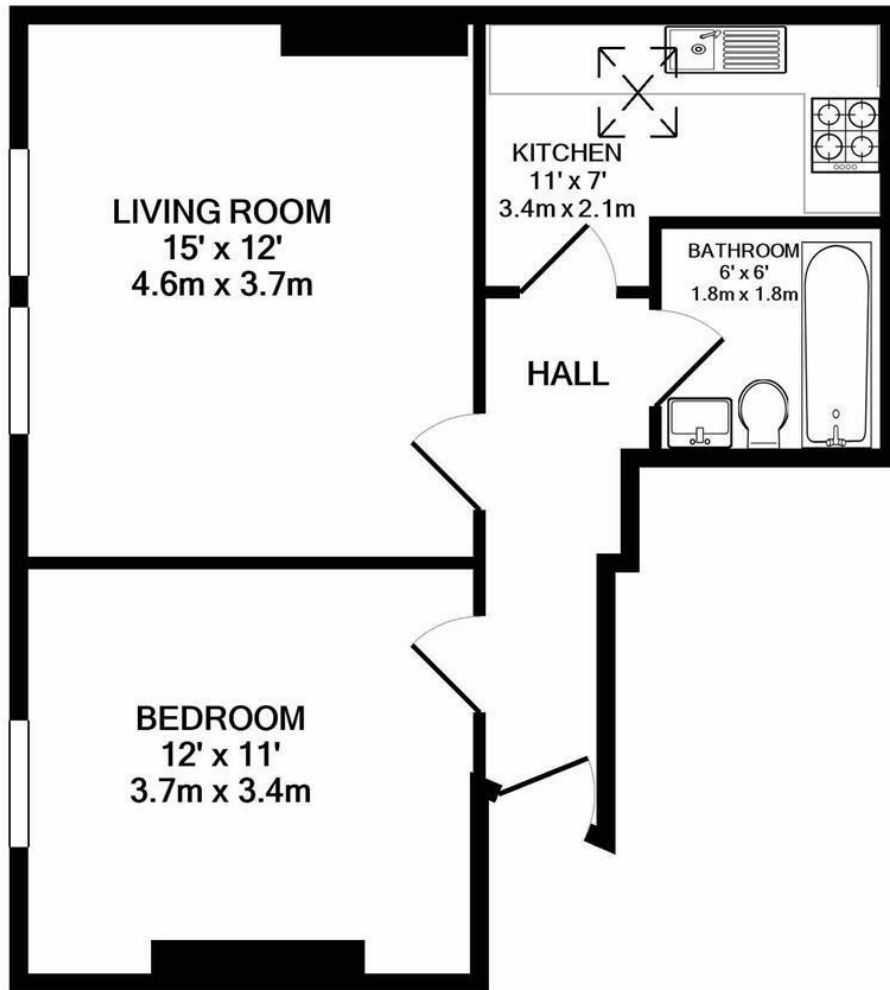


**Bridgeman Road
Teddington
TW11 9BL**

£995

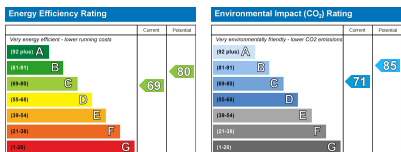
ChaseBuchanan





TOTAL APPROX. FLOOR AREA 442 SQ.FT. (41.1 SQ.M.)

Produced solely for Chase Buchanan
Made with Metropix ©2020



- Central location
- Spacious lounge
- Close to Teddington station
- Top floor apartment
- Modern kitchen and bathroom
- Near to Bushy Park

A spacious one double bedroom, top floor apartment located in this pretty Victorian conversion. The property offers a spacious lounge, a separate fully fitted kitchen and modern bathroom. This apartment is neutrally decorated throughout with sash windows and a sky light.

Located only a stones throw from Teddington station, the delights of Teddington high street and Bushy Park are on your door step.

Chase Buchanan are bonded members of ARLA PropertyMark.

For more information or to book a viewing, please contact:

020 8977 1066

Chase Buchanan

43 High Street, Teddington, TW11 8HB