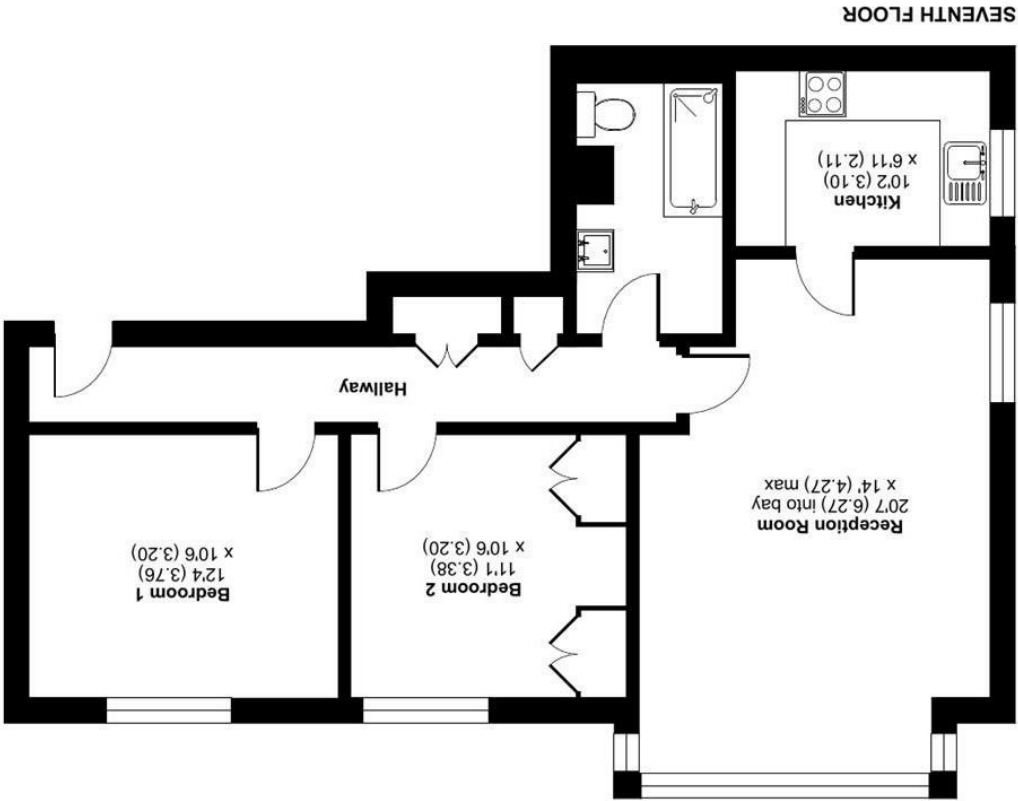


Produced for Silverman Black Estate Agents REF: 1258179  
Incorporating International Property Measurement Standards (IPMS2 Residential). © nchecom 2025.



Carlton Towers, North Street, Carshalton, SM5  
Approximate Area = 764 sq ft / 70.9 sq m  
For identification only - Not to scale







## 135 Carlton Towers North Street, Carshalton, SM5 2EH

**Price Guide £320,000**

Silverman Black is delighted to offer this spacious two bedroom penthouse apartment located in one of Carshalton's landmark residential developments. Noted for the sheer size of the apartments and the panoramic views over South London - especially from the upper floors of the development, Carlton Towers has always been a firm favourite with buyers looking for properties with a certain "wow factor". No 135 is located on the top floor of the tower - with amazing views both across to The Shard/Crystal Palace and southwards towards the North Downs - with accommodation incorporating a generously proportioned open plan living room, two large double bedrooms, a well fitted kitchen and a modern bathroom suite. Other benefits include gas/radiator central heating, good storage facilities, new double glazed windows (fitted last year), large communal hallways on each floor, some well maintained communal gardens and a single garage - located en-bloc to the rear of the site. There are lift services from the ground floor to Floor 6 - but please note that the apartments on Floor 7 are accessed via a short internal stairwell. In terms of facilities, there is a busy local parade of shops right on the doorstep at Wrythe Green (50 yards away), whilst Carshalton BR station is 0.25 miles distant (5 minutes walk) - offering fast & frequent services to London Victoria in about 28 minutes, via Clapham Junction. Carshalton Village centre, The Grove (reputed to be the finest remaining example of a Victorian urban park in London), The Ponds and All Saints Church are all roughly half a mile away whilst fuller shopping, restaurant and recreational facilities at Valley Park, Croydon or Sutton are all only about 3 miles distant. Viewing of this impressive apartment is strongly recommended - so call today to book your appointment.



- A fantastic two bedroom Penthouse apartment in one of Carshalton's landmark residential apartment complexes
- Panoramic views from the 7th Floor across to The Shard, Crystal Palace and southwards towards the North Downs
- Generously proportioned accommodation comprising a huge Living Room, two Double Bedrooms, a well fitted Kitchen and modern Bathroom
- Gas/Radiator heating, new double glazed windows (fitted last year), large communal landings on every level, communal gardens and a garage
- Lift Service from ground floor level to Floor 6 with an internal stairwell to Floor 7
- Leasehold - with around 139 years left unexpired on the current term
- Council Tax Band "C"; EPC rating "D"
- 5 minutes walk (0.25 miles) to Carshalton BR station offering fast, easy access to London Victoria via Clapham Junction
- Excellent local parade of shops only 50 yards away, 0.5 miles to Carshalton Village, The Ponds, The Grove and All Saints Church
- Viewing of this exceptional apartment is highly recommended - so call today to book your appointment to visit

