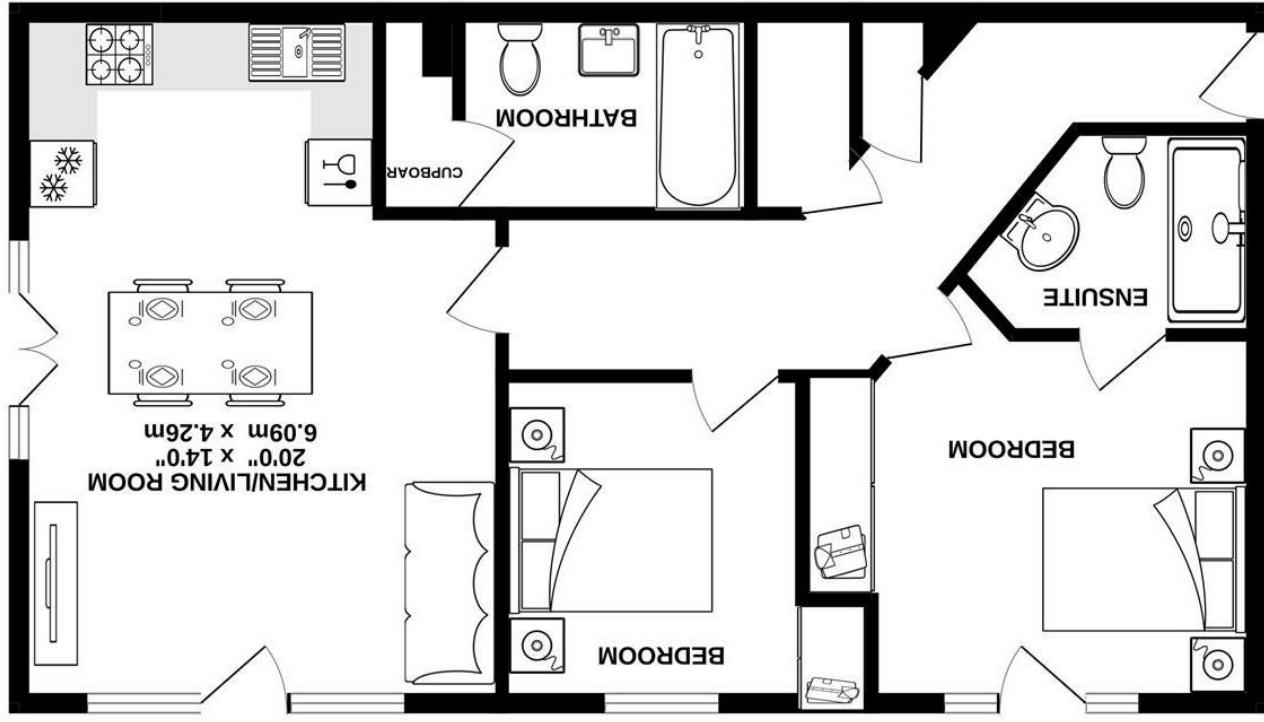


Whilst every attempt has been made to ensure the accuracy of the floorplan contained here, measurements of doors, windows, rooms and any other items are approximate and no responsibility is taken for any error, omission or mis-statement. This plan is for illustrative purposes only and should be used as such by any prospective purchaser. The services, systems and appliances shown have not been tested and no guarantee as to their operability or efficiency can be given.
 Made with Metropix 5/2023



GROUND FLOOR

SILVERMAN
BLACK
 PROPERTY SPECIALISTS



Flat 18 Waterside Court Millpond Place, Carshalton, SM5 2JT

£1,700 Per Calendar Month



Flat 18 Waterside Court Millpond Place

Carshalton, SM5 2JT

£1,700 Per Calendar Month

Available Immediately - unfurnished. Silverman Black is delighted to offer this spacious and beautifully presented two double bedroom/two bathroom first floor apartment, located in one of Carshalton's most prestigious "gated" developments. Situated in a very pretty residential complex, bordered on one side by the River Wandle, Waterside Court affords well proportioned and stylish accommodation which comprises a large living room with two Juliet balconies and an open plan, fully integrated kitchen with modern appliances, a master bedroom with built in storage, a further Juliet balcony and an en-suite shower room, a generous guest room/second bedroom, a well equipped family bathroom and ample storage cupboards in the hallway. Externally, there is one allocated parking space with the apartment and some visitors facilities within the secure gated compound, and a lift service giving access to all of the floors. In terms of local facilities, there is a good parade of local shops in Butter Hill - only a couple of hundred yards away - whilst Carshalton BR station is located just over half a mile away (11 mins walk) affording easy access to London Victoria and Central London. Carshalton Village and The Ponds are an easy ten minute stroll across The Grove - reputed to be amongst the finest examples of a Victorian urban park remaining in London - and the development is located in the heart of the London Borough of Sutton, which boasts some of the finest schooling facilities in the City. Viewing is highly recommended - so call today to book your appointment.

- Available Immediately - Unfurnished. A stunning, spacious two bedroom/two bathroom, first floor apartment located in one of Carshalton's most prestigious gated developments
- Exceptional accommodation incorporating a large dual aspect Living Room with two Juliet Balconies and a fully integrated kitchen
- Master Bedroom with a further Juliet Balcony, built in wardrobes and an en-suite shower room; Guest room/bed 2; family bathroom and ample storage
- Allocated parking space & some visitors facilities within the secure, gated compound
- Lift service to all floors, double glazing, central heating
- EPC Rating: TBC; Council Tax Band C
- 0.6 Miles to Carshalton BR station (11 minutes walk); 10 minute stroll across The Grove to Carshalton Village and The Ponds; 6 minutes walk to The Westcroft Leisure Centre
- Viewing highly recommended - so book your appointment to view today.

