



Apt 411, The Litmus Building, 195 Huntingdon Street
Nottingham



In Excess of **£155,000**



Rare Corner Plot with two bedrooms on the fourth storey of the highly coveted Litmus Building. The property comprises two double bedrooms, one with en-suite and a large open plan kitchen/living space with plentiful windows being the corner aspect of the building. Council Tax band: C

Tenure: Leasehold

- Allocated Parking
- Two Bedrooms
- Ensuite to Master
- Corner Plot
- Fourth Storey
- Lift Access
- Pool & Gym Facilities
- Concierge
- City Centre Location



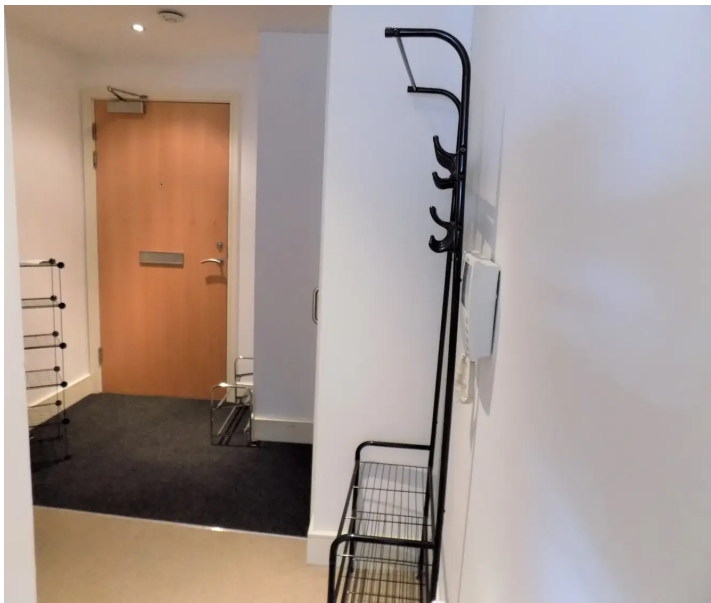
Hallway

Bathroom

Master Bedroom with Ensuite

Bedroom Two

Kitchen/Living/Diner







Fairview Estates

31 Abbey Road, West Bridgford - NG2 5NG

0115 958 7791

info@fairviewestates.co.uk

www.fairviewestates.co.uk/