



This detached 5-bed property benefits from its own self-contained annexe with separate entrance. This spacious property offers versatile living and would be perfect for multigenerational living or a large family. Located on the sought after Seymour Road, this is a property that can provide diverse living. Fantastic space throughout.

39 Seymour Road, Newton Abbot, TQ12 2PT



thoroughly good property agents



PROPERTY TYPE

Detached House



SIZE

2,788 sq ft



LOCATION

Elevated Location



AGE

1950s, 1960s and 1970s



BEDROOMS

6



RECEPTION ROOMS

2



BATHROOMS

3



WARMTH

Gas Central Heating



PARKING

Garage, Off Road Parking



OUTSIDE SPACE

Tiered Patio & Garden



EPC RATING

75 C



COUNCIL TAX BAND

E



in a nutshell...

- Far Reaching Views
- Sought After Seymour Road Location
- Garage And Off Road Parking
- Walking Distance to Town Centre
- Large Tiered Garden
- A Short Distance to The A380
- Council Tax Band A- One Bed Annexe



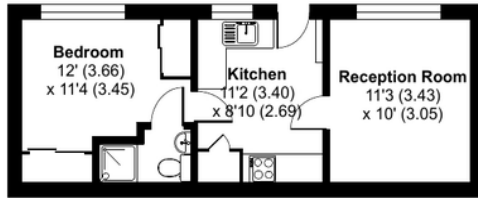


the floorplan...

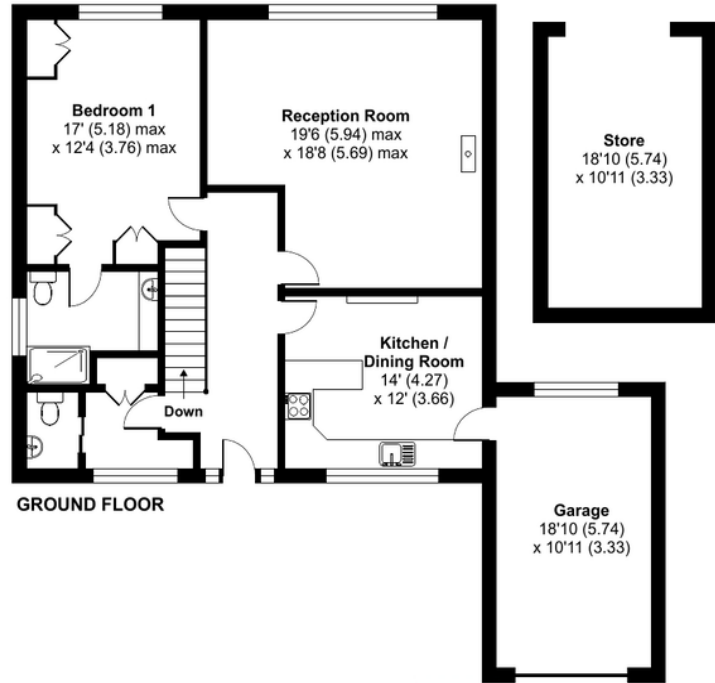
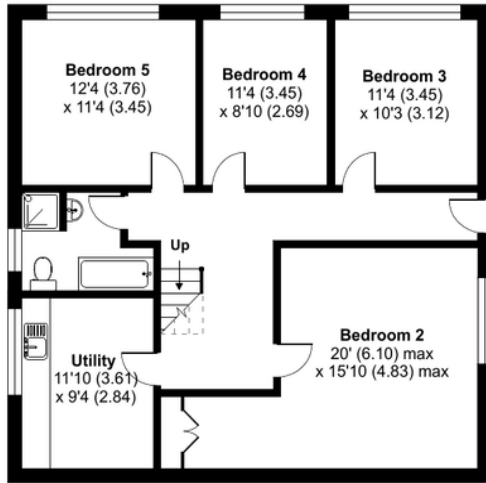
Seymour Road, Newton Abbot, TQ12

Approximate Area = 2010 sq ft / 186.7 sq m
 Limited Use Area(s) = 4 sq ft / 0.3 sq m
 Annexe = 360 sq ft / 33.4 sq m
 Garage = 207 sq ft / 19.2 sq m
 Outbuilding = 207 sq ft / 19.2 sq m
 Total = 2788 sq ft / 259 sq m

For identification only - Not to scale



Denotes restricted head height



Floor plan produced in accordance with RICS Property Measurement Standards incorporating International Property Measurement Standards (IPMS2 Residential). © ncheom 2024. Produced for Ashtons Complete (Complete Property). REF: 1125706



Our note. For clarification we have prepared these sales particulars as a general guide and have not carried out a detailed survey nor tested the services, appliances or fittings. Room sizes should not be relied upon for carpets or furnishings. If there are any important matters which are likely to affect your decision to buy, please contact us before viewing this property. These particulars, whilst believed to be accurate, are set out as a general outline only for guidance and do not constitute any part of an offer or contract. Intending purchasers should not rely on them as statements of representation of fact, but must satisfy themselves by inspection or otherwise as to their accuracy. No person in the employment of Complete Property Services has the authority to make or give any representation or warranty in respect of the property.

SKETCH PLAN FOR ILLUSTRATIVE PURPOSES ONLY. All measurements and sizes and locations of walls, doors, window fittings and appliances are shown conventionally and are approximate only and cannot be regarded as being a representation either by the Seller or his Agent. We hope that these plans will assist you by providing you with a general impression of the layout of the accommodation. The plans are not to scale nor accurate in detail. © Unauthorised reproduction prohibited.

As part of the service we offer we may recommend ancillary services to you which we believe will help with your property transaction. We wish to make you aware that should you decide to proceed we will receive a referral fee. This could be a fee, commission, payment or other reward. We will not refer your details unless you have provided consent for us to do so. You are not under any obligation to provide us with your consent or to use any of these services, but where you do you should be aware of the following referral fee information. You are also free to choose an alternative provider. To find out more about this, please speak to a member of the team.

PROPERTY DETAILS:

TENURE- Freehold

EPC RATING- C

EPC RATING ANNEXE- E

COUNCIL TAX BAND- E

COUNCIL TAX BAND ANNEXE- A





Need a more complete picture? Get in touch with your local branch...

Tel **01626 362 246**
Email newton@completeproperty.co.uk
Web completeproperty.co.uk

Complete
79 Queen Street
Newton Abbot
TQ12 2AU

Are you selling a property too? Call us to get a set of property details like these...

selling

letting

land &
new homes

signature
homes

complete.