



# PRESTIGE & VILLAGE

UK's finest properties



## HIGH STREET, BISHOP'S STORTFORD, CM23 2NA

INVESTMENT OPPORTUNITY SOLD AS SEEN CASH PURCHASE REQUIRED

Great opportunity to acquire this town centre premises situated just off the High Street (Basbow Lane) in Bishop's Stortford. Planning has been granted for residential use but was not signed off after conversion so would need to be reapplied for. The property is set out on three floors and is situated right in the centre of town.

Viewing by appointment only. Please contact Ray Wilson (07908-627441) or Niall McCarthy (07887-987968) to book your appointment.

GUIDE PRICE £325,000

# HIGH STREET

, BISHOP'S STORTFORD, CM23 2NA



- Fantastic Investment Opportunity
- Cash Purchase Required
- Large Sitting Room or Second Bedroom
- CASH PURCHASE SOLD AS SEEN
- One/Two Bedroom Premises
- Large Kitchen Diner
- Main Bedroom with En-Suite Shower Room
- Suitable for Residential or Commercial (Subject to Planning)
- Downstairs Cloakroom/Shower Room
- Communal Rear Courtyard

## Introduction

A most charming 1-2-bedroom end terraced cottage enjoying a prime location situated only a short walk from the town centre and mainline railway station. This house has bright and airy accommodation. On the ground floor there is a large kitchen/dining room with door exiting onto shared rear court yard, there is also a downstairs shower / cloakroom. On the first floor is a large lounge or this could be used as a second bedroom, this room also has storage cupboard. On the second floor there is a large bedroom with en-suite shower and w/c.

## Kitchen/Diner

13'8 x 12'5 (4.17m x 3.78m)

## Downstairs Cloakroom/Shower Room

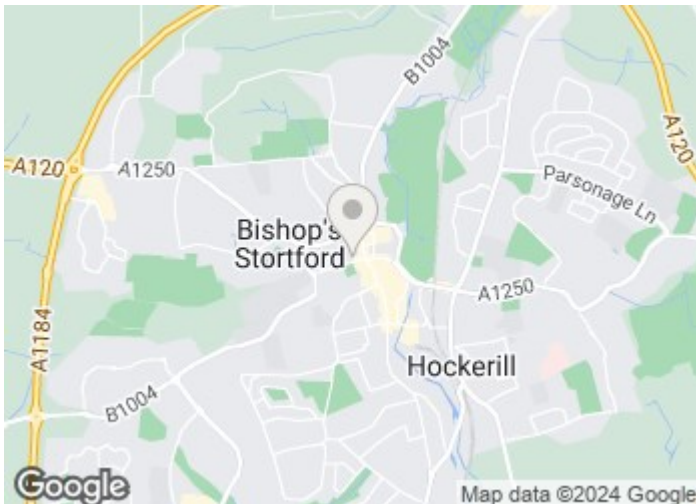
## Stairs to First Floor

Sitting Room or Bedroom  
14'7 x 12'11 (4.45m x 3.94m)

## Stairs to Second Floor

Bedroom with En-Suite  
17'2 x 12'6 (5.23m x 3.81m)

## Communal Rear Courtyard



Directions

Band

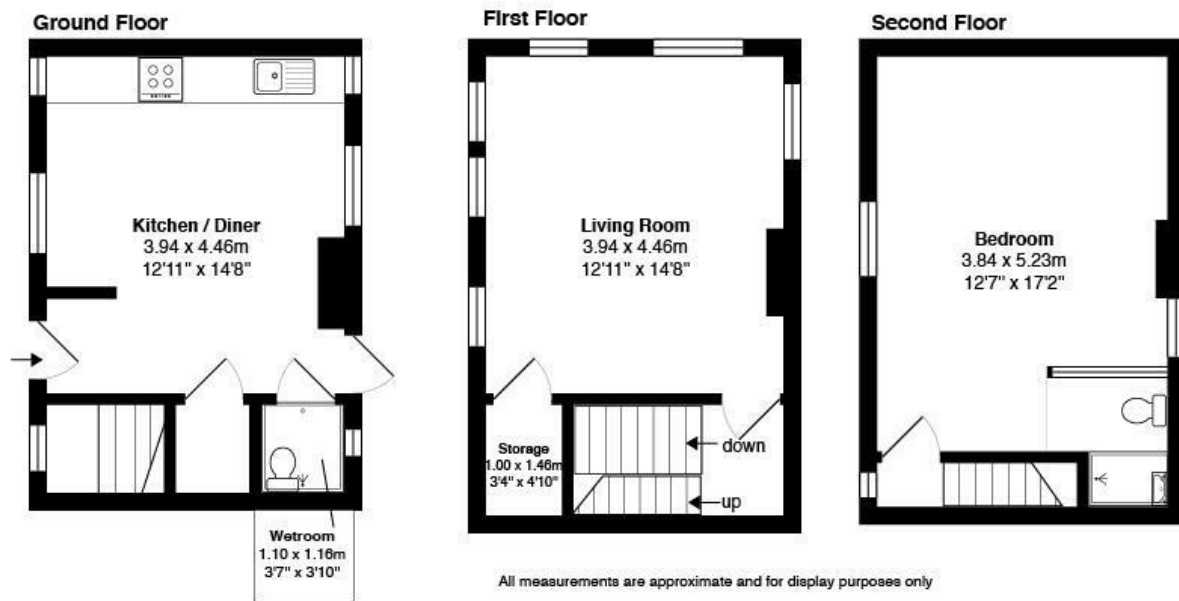


# FLOOR PLAN



## The Cottage, Basbow Lane, Bishop's Stortford

Total Area: 69.7 m<sup>2</sup> ... 750 ft<sup>2</sup>



These particulars, whilst believed to be accurate are set out as a general outline only for guidance and do not constitute any part of an offer or contract. Intending purchasers should not rely on them as statements of representation of fact, but must satisfy themselves by inspection or otherwise as to their accuracy. No person in this firm's employment has the authority to make or give any representation or warranty in respect of the property.

