



PRESTIGE & VILLAGE

UK's finest properties

19, HIGH STREET, ELSTREE, WD6 3EP



Nestled in the charming village of Elstree, 19 High Street Elstree, is a delightful Grade II listed cottage that beautifully combines character with charm. The property is situated in the heart of the Elstree Conservation Area, close to the bustling town of Borehamwood, making it an ideal location for those seeking both convenience and a rural setting. The home boasts a cozy atmosphere, perfect for creating lasting memories. The principal bedroom is particularly impressive, featuring dual aspect windows that flood the room with natural light, ample storage, and an ensuite bathroom. A charming west facing balcony overlooks the established garden, providing a serene spot to enjoy lovely sunsets. There is also a rural view over fields and into the distance from here.

The property offers two well-proportioned bedrooms, ensuring comfort for family or guests. The private rear garden is a delightful retreat ideal for entertaining or relaxing in your own surroundings. The current owner has cherished this home and it radiates a warm, homely feel.

Elstree village enjoys nearby rail and tube links and has very easy access to the A1, M1 and M25. Whether you're seeking a comfortable retreat or a home ideal for entertaining, please don't hesitate to arrange a viewing of 19 High Street Elstree.





- Grade II listed building - Located in the Elstree Conservation Area
- 2 spacious bedrooms, 2 bathrooms (1 ensuite)
- Dual aspect principal bedroom with en-suite and balcony
- Bright and spacious conservatory overlooking the garden
- Private rear garden – Mature and well-maintained, perfect for relaxing outdoors
- Generous storage throughout
- Detached garage plus two parking spaces (one in front of the house, one in front of the garage)
- Lovely sunset views
- Within easy walking distance of several places of Worship
- Short distance to Borehamwood's shops, transport links, and Elstree & Borehamwood station







THE COTTAGE

Welcome to this lovely 2-bedroom cottage nestled in the heart of Elstree village.

Step inside and discover a private oasis—full of charm, character, and warmth. This thoughtfully maintained home offers a peaceful retreat, blending cozy interiors with bright, versatile living spaces.

GROUND FLOOR

LIVING & DINING ROOM

24'5" x 13'0" (7.44m x 3.96m)

BATHROOM

11'3" x 4'8" (3.43m x 1.42m)

KITCHEN/DINER

13'0" x 11'6" (3.96m x 3.51m)

UTILITY ROOM

9'5" x 6'7" (2.87m x 2.01m)

CONSERVATORY

14'9" x 6'11" (4.50m x 2.11m)

FIRST FLOOR

BEDROOM 1

26'10" x 11'2" (8.18m x 3.40m)

EN-SUITE

9'6" x 6'7" (2.90m x 2.01m)

BEDROOM 2

14'8" x 9'8" (4.49m x 2.95m)

LANDING

13'1" x 6'5" (3.99m x 1.96m)

OUTSIDE

GARDEN

68'11" x 24'7" (21.01m x 7.49m)

GARAGE

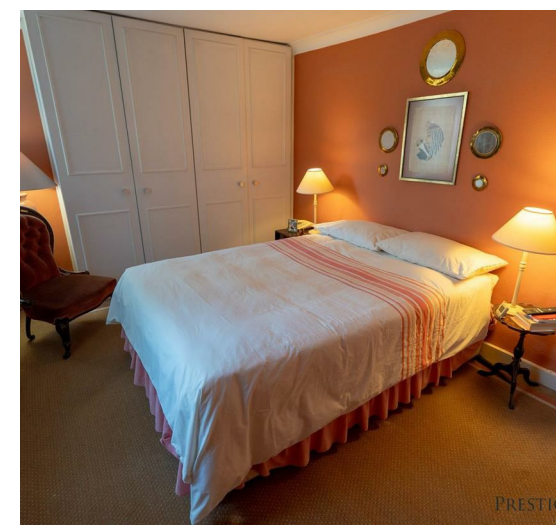
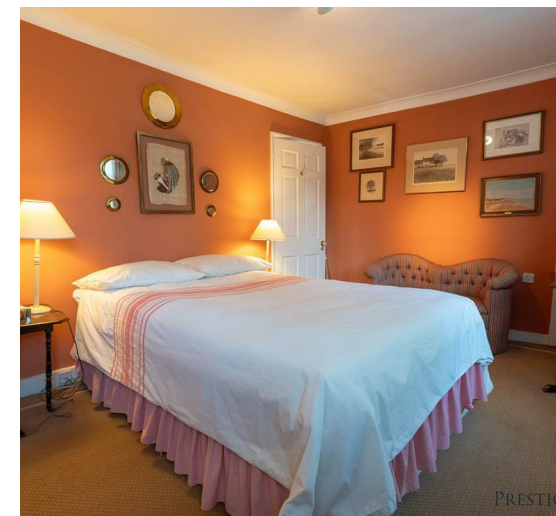
18'3" x 13'1" (5.57m x 4.00m)

BALCONY VIEWS

Stunning views from the balcony

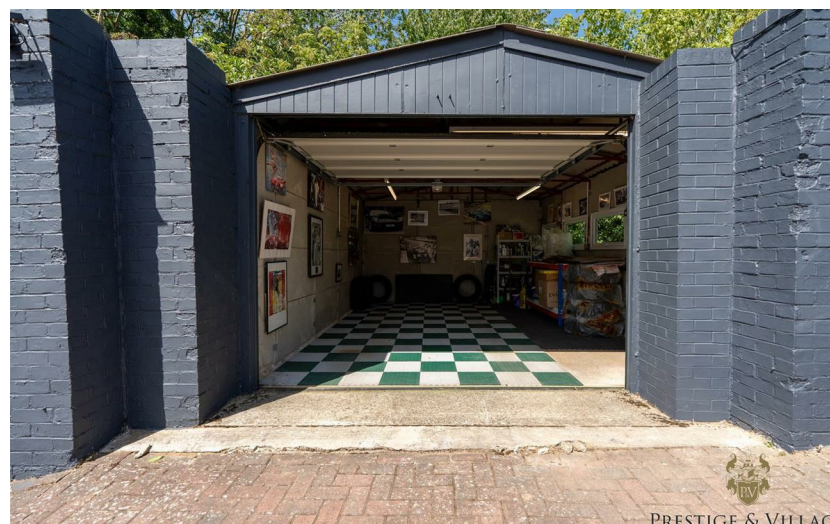
ELSTREE VILLAGE

Elstree is a sought-after and picturesque Hertfordshire village set in the Green Belt with history dating back to Roman times. It's approximately 15 miles from Central London and is within the so-called "Golden Triangle" of roads which offers quick and easy access to the A1, M1 and M25. Elstree is also conveniently close to the Thameslink railway at Elstree & Borehamwood station and the Jubilee line underground at Stanmore.





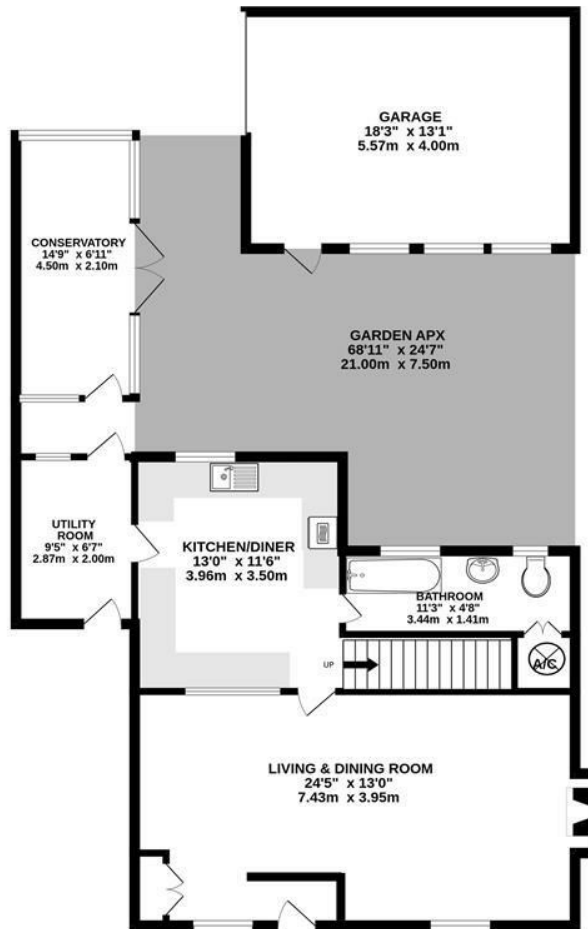
This is a perfect location for families, with easy access to Aldenham Country Park—a popular spot for walks, nature, and outdoor activities—and several highly rated schools, including Aldenham School and Haberdashers' Boys' and Girls' Schools. Commuters benefit from Elstree & Borehamwood Thameslink station, offering direct trains to London St Pancras in under 25 minutes, as well as convenient road access to the M1, M25, and A1(M).



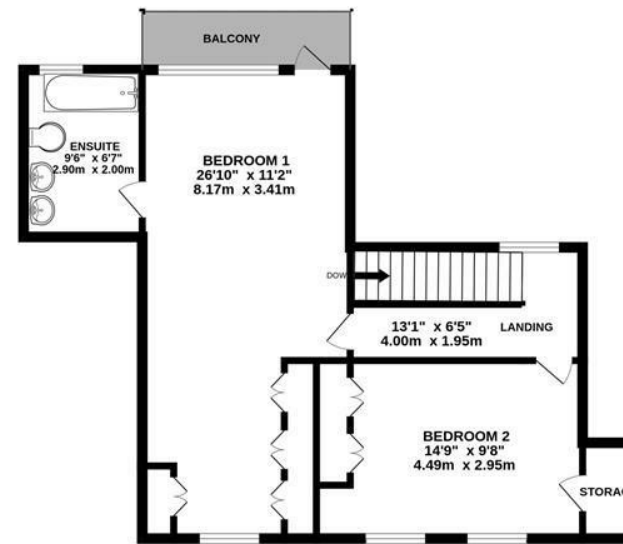
HERTSMERE
Band E

Energy Efficiency Rating			Environmental Impact (CO ₂) Rating		
Very energy efficient - lower running costs			Very environmentally friendly - lower CO ₂ emissions		
A	B	C	A	B	C
91-101	81-90	71-80	91-101	81-90	71-80
105-120	95-110	85-100	105-120	95-110	85-100
120-135	110-125	100-115	120-135	110-125	100-115
135-150	125-140	115-130	135-150	125-140	115-130
150-170	140-160	130-150	150-170	140-160	130-150
170-200	160-180	150-170	170-200	160-180	150-170
200-250	180-220	170-200	200-250	180-220	170-200
250-300	220-260	200-240	250-300	220-260	200-240
300-350	260-300	240-280	300-350	260-300	240-280
350-400	300-340	280-320	350-400	300-340	280-320
400-450	340-380	320-360	400-450	340-380	320-360
450-500	380-420	360-400	450-500	380-420	360-400
500-550	420-460	400-440	500-550	420-460	400-440
550-600	460-500	440-480	550-600	460-500	440-480
600-650	500-540	480-520	600-650	500-540	480-520
650-700	540-580	520-560	650-700	540-580	520-560
700-750	580-620	560-600	700-750	580-620	560-600
750-800	620-660	600-640	750-800	620-660	600-640
800-850	660-700	640-680	800-850	660-700	640-680
850-900	700-740	680-720	850-900	700-740	680-720
900-950	740-780	720-760	900-950	740-780	720-760
950-1000	780-820	760-800	950-1000	780-820	760-800
1000-1050	820-860	800-840	1000-1050	820-860	800-840
1050-1100	860-900	840-880	1050-1100	860-900	840-880
1100-1150	900-940	880-920	1100-1150	900-940	880-920
1150-1200	940-980	920-960	1150-1200	940-980	920-960
1200-1250	980-1020	960-1000	1200-1250	980-1020	960-1000
1250-1300	1020-1060	1000-1040	1250-1300	1020-1060	1000-1040
1300-1350	1060-1100	1040-1080	1300-1350	1060-1100	1040-1080
1350-1400	1100-1140	1080-1120	1350-1400	1100-1140	1080-1120
1400-1450	1140-1180	1120-1160	1400-1450	1140-1180	1120-1160
1450-1500	1180-1220	1160-1200	1450-1500	1180-1220	1160-1200
1500-1550	1220-1260	1200-1240	1500-1550	1220-1260	1200-1240
1550-1600	1260-1300	1240-1280	1550-1600	1260-1300	1240-1280
1600-1650	1300-1340	1280-1320	1600-1650	1300-1340	1280-1320
1650-1700	1340-1380	1320-1360	1650-1700	1340-1380	1320-1360
1700-1750	1380-1420	1360-1400	1700-1750	1380-1420	1360-1400
1750-1800	1420-1460	1400-1440	1750-1800	1420-1460	1400-1440
1800-1850	1460-1500	1440-1480	1800-1850	1460-1500	1440-1480
1850-1900	1500-1540	1480-1520	1850-1900	1500-1540	1480-1520
1900-1950	1540-1580	1520-1560	1900-1950	1540-1580	1520-1560
1950-2000	1580-1620	1560-1600	1950-2000	1580-1620	1560-1600
2000-2050	1620-1660	1600-1640	2000-2050	1620-1660	1600-1640
2050-2100	1660-1700	1640-1680	2050-2100	1660-1700	1640-1680
2100-2150	1700-1740	1680-1720	2100-2150	1700-1740	1680-1720
2150-2200	1740-1780	1720-1760	2150-2200	1740-1780	1720-1760
2200-2250	1780-1820	1760-1800	2200-2250	1780-1820	1760-1800
2250-2300	1820-1860	1800-1840	2250-2300	1820-1860	1800-1840
2300-2350	1860-1900	1840-1880	2300-2350	1860-1900	1840-1880
2350-2400	1900-1940	1880-1920	2350-2400	1900-1940	1880-1920
2400-2450	1940-1980	1920-1960	2400-2450	1940-1980	1920-1960
2450-2500	1980-2020	1960-2000	2450-2500	1980-2020	1960-2000
2500-2550	2020-2060	2000-2040	2500-2550	2020-2060	2000-2040
2550-2600	2060-2100	2040-2080	2550-2600	2060-2100	2040-2080
2600-2650	2100-2140	2080-2120	2600-2650	2100-2140	2080-2120
2650-2700	2140-2180	2120-2160	2650-2700	2140-2180	2120-2160
2700-2750	2180-2220	2160-2200	2700-2750	2180-2220	2160-2200
2750-2800	2220-2260	2200-2240	2750-2800	2220-2260	2200-2240
2800-2850	2260-2300	2240-2280	2800-2850	2260-2300	2240-2280
2850-2900	2300-2340	2280-2320	2850-2900	2300-2340	2280-2320
2900-2950	2340-2380	2320-2360	2900-2950	2340-2380	2320-2360
2950-3000	2380-2420	2360-2400	2950-3000	2380-2420	2360-2400
3000-3050	2420-2460	2400-2440	3000-3050	2420-2460	2400-2440
3050-3100	2460-2500	2440-2480	3050-3100	2460-2500	2440-2480
3100-3150	2500-2540	2480-2520	3100-3150	2500-2540	2480-2520
3150-3200	2540-2580	2520-2560	3150-3200	2540-2580	2520-2560
3200-3250	2580-2620	2560-2600	3200-3250	2580-2620	2560-2600
3250-3300	2620-2660	2600-2640	3250-3300	2620-2660	2600-2640
3300-3350	2660-2700	2640-2680	3300-3350	2660-2700	2640-2680
3350-3400	2700-2740	2680-2720	3350-3400	2700-2740	2680-2720
3400-3450	2740-2780	2720-2760	3400-3450	2740-2780	2720-2760
3450-3500	2780-2820	2760-2800	3450-3500	2780-2820	2760-2800
3500-3550	2820-2860	2800-2840	3500-3550	2820-2860	2800-2840
3550-3600	2860-2900	2840-2880	3550-3600	2860-2900	2840-2880
3600-3650	2900-2940	2880-2920	3600-3650	2900-2940	2880-2920
3650-3700	2940-2980	2920-2960	3650-3700	2940-2980	2920-2960
3700-3750	2980-3020	2960-3000	3700-3750	2980-3020	2960-3000
3750-3800	3020-3060	3000-3040	3750-3800	3020-3060	3000-3040
3800-3850	3060-3100	3040-3080	3800-3850	3060-3100	3040-3080
3850-3900	3100-3140	3080-3120	3850-3900	3100-3140	3080-3120
3900-3950	3140-3180	3120-3160	3900-3950	3140-3180	3120-3160
3950-4000	3180-3220	3160-3200	3950-4000	3180-3220	3160-3200
4000-4050	3220-3260	3200-3240	4000-4050	3220-3260	3200-3240
4050-4100	3260-3300	3240-3280	4050-4100	3260-3300	3240-3280
4100-4150	3300-3340	3280-3320	4100-4150	3300-3340	3280-3320
4150-4200	3340-3380	3320-3360	4150-4200	3340-3380	3320-3360
4200-4250	3380-3420	3360-3400	4200-4250	3380-3420	3360-3400
4250-4300	3420-3460	3400-3440	4250-4300	3420-3460	3400-3440
4300-4350	3460-3500	3440-3480	4300-4350	3460-3500	3440-3480
4350-4400	3500-3540	3480-3520	4350-4400	3500-3540	3480-3520
4400-4450	3540-3580	3520-3560	4400-4450	3540-3580	3520-3560
4450-4500	3580-3620	3560-3600	4450-4500	3580-3620	3560-3600
4500-4550	3620-3660	3600-3640	4500-4550	3620-3660	3600-3640
4550-4600	3660-3700	3640-3680	4550-4600	3660-3700	3640-3680
4600-4650	3700-3740	3680-3720	4600-4650	3700-3740	3680-3720
4650-4700	3740-3780	3720-3760	4650-4700	3740-3780	3720-3760
4700-4750	3780-3820	3760-3800	4700-4750	3780-3820	3760-3800
4750-4800	3820-3860	3800-3840	4750-4800	3820-3860	3800-3840
4800-4850	3860-3900	3840-3880	4800-4850	3860-3900	3840-3880
4850-4900	3900-3940	3880-3920	4850-4900	3900-3940	3880-3920
4900-4950	3940-3980	3920-3960	4900-4950	3940-3980	3920-3960
4950-5000	3980-4020	3960-4000	4950-5000	3980-4020	3960-4000
5000-5050	4020-4060	4000-4040	5000-5050	4020-4060	4000-4040
5050-5100	4060-4100	4040-4080	5050-5100	4060-4100	4040-4080
5100-5150	4100-4140	4080-4120	5100-5150	4100-4140	4080-4120
5150-5200	4140-4180	4120-4160	5150-5200	4140-4180	4120-4160
5200-5250	4180-4220	4160-4200	5200-5250	4180-4220	4160-4200
5250-5300	4220-4260	4200-4240	5250-5300	4220-4260	4200-4240
5300-5350	4260-4300	4240-4280	5300-5350	4260-4300	4240-4280
5350-5400	4300-4340	4280-4320	5350-5400	4300-4340	4280-4320
5400-5450	4340-4380	4320-4360	5400-5450	4340-4380	4320-4360
5450-5500	4380-4420	4360-4400	5450-5500	4380-4420	4360-4400
5500-5550	4420-4460	4400-4440	5500-5550	4420-4460	4400-4440
5550-5600	4460-4500	4440-4480	5550-5600	4460-4500	4440-4480
5600-5650	4500-4540	4480-4520	5600-5650	4500-4540	4480-4520
5650-5700	4540-4580	4520-4560	5650-5700	4540-4580	4520-4560
5700-5750	4580-4620	4560-4600	5700-5750	4580-4620	4560-4600
5750-5800	4620-4660	4600-4640	5750-5800	4620-4660	4600-4640
5800-5850	4660-4700	4640-4680	5800-5850	4660-4700	4640-4680
5850-5900	4700-4740	4680-4720	5850-5900	4700-4740	4680-4720
5900-5950	4740-4780	4720-4760	5900-5950	4740-4780	4720-4760
5950-6000	4780-4820	4760-4800	5950-6000	4780-4820	4760-4800
6000-6050	4820-4860	4800-4840	6000-6050	4820-4860	4800-4840
6050-6100	4860-4900	4840-4880	6050-6100	4860-4900	4840-4880
6100-6150	4900-4940	4880-4920	6100-6150	4900-4940	4880-4920
6150-6200	4940-4980	4920-4960	6150-6200	4940-4980	4920-4960
6200-6250	4980-5020	4960-5000	6200-6250	4980-5020	4960-5000
6250-6300	5020-5060	5000-5040	6250-6300	5020-5060	5000-5040
6300-6350	5060-5100	5040-5080	6300-6350	5060-5100	5040-5080
6350-6400	5100-5140	5080-5120	6350-6400	5100-5140	5080-5120
6400-6450	5140-5180	5120-5160	6400-6450	5140-5180	5120-5160
6450-6500	5180-5220	5160-5200	6450-6500	5180-5220	51

GROUND FLOOR
1016 sq.ft. (94.4 sq.m.) approx.



1ST FLOOR
616 sq.ft. (57.2 sq.m.) approx.



TOTAL FLOOR AREA : 1632 sq.ft. (151.6 sq.m.) approx.

Whilst every attempt has been made to ensure the accuracy of the floorplan contained here, measurements of doors, windows, rooms and any other items are approximate and no responsibility is taken for any error, omission or mis-statement. This plan is for illustrative purposes only and should be used as such by any prospective purchaser. The services, systems and appliances shown have not been tested and no guarantee as to their operability or efficiency can be given.

Made with Metropix ©2025



These particulars, whilst believed to be accurate are set out as a general outline only for guidance and do not constitute any part of an offer or contract. Intending purchasers should not rely on them as statements of representation of fact, but must satisfy themselves by inspection or otherwise as to their accuracy. No person in this firm's employment has the authority to make or give any representation or warranty in respect of the property.



PRESTIGE & VILLAGE

UK's finest properties

PROPERTY@PRESTIGEANDVILLAGE.CO.UK

WWW.PRESTIGEANDVILLAGE.CO.UK