

PROW

THE

Two fully fitted and fully managed
floors of 2,300 sq ft available

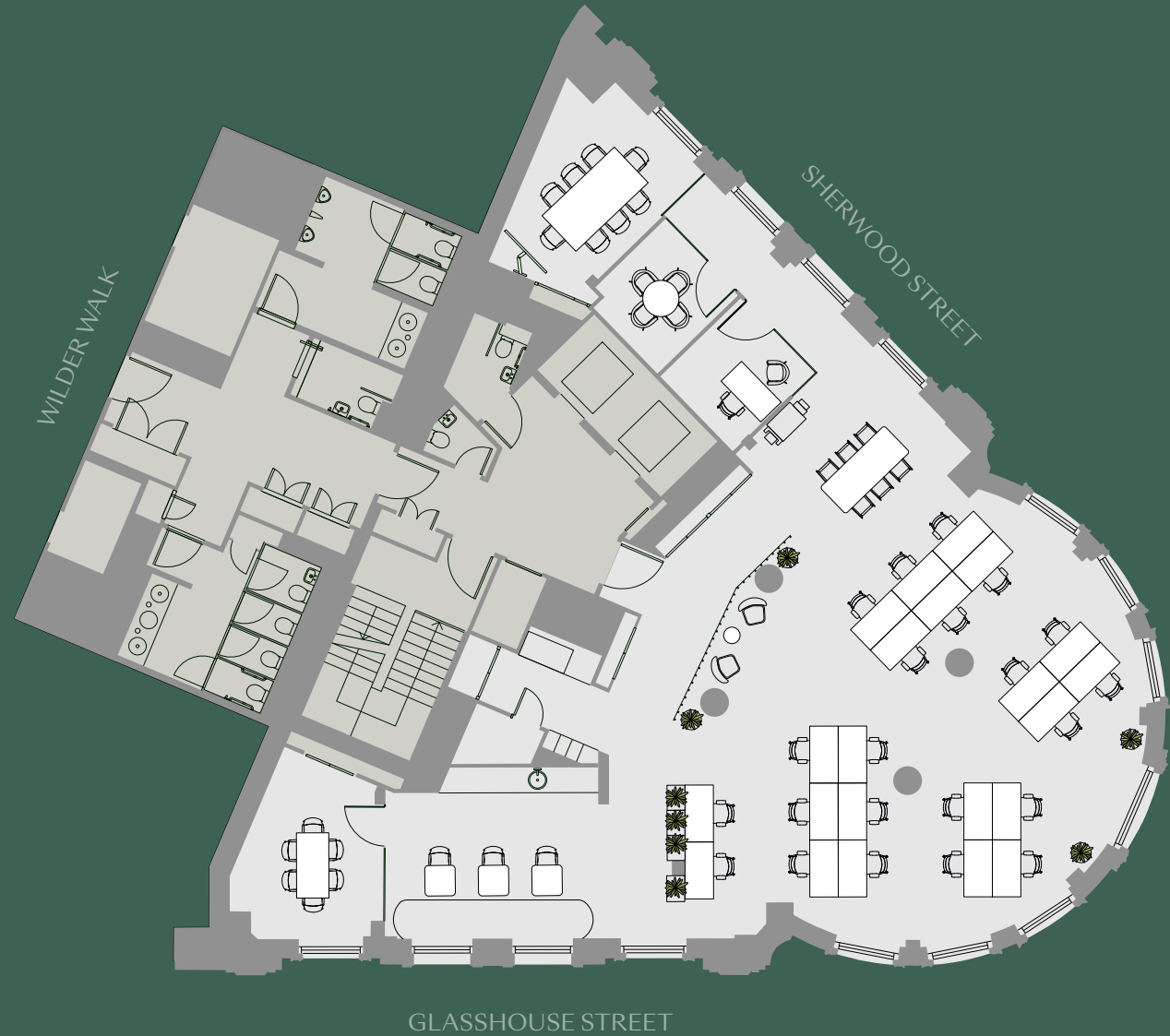
With excellent natural light on 3 sides and unparalleled views of Piccadilly Circus and beyond, The Prow offers exceptionally high quality, fully furnished and managed offices, direct from The Crown Estate.





Availability

Floor	sq ft	sq m
Third	2,376	220.7
Second	2,363	219.5
Total	4,739	440.2



Second & third floors

Indicative floor plan. Not to scale.



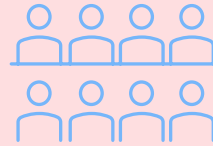
Each floor offers



22 workstations



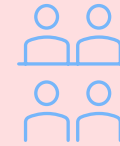
Kitchen /
break out



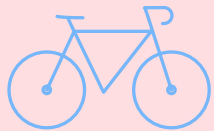
8 person
meeting room



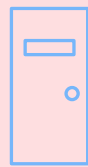
Internet
/ wifi



4 person
meeting room



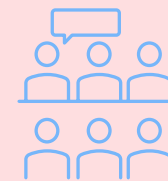
Bike racks
and showers



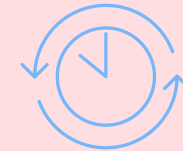
1 private office



Concierge
(8.30am -5.30pm)



6 person
collaboration desk



24 hour access
& security

The Prow is situated in the heart of London's West End, just off Regent Street, with some of the capital's most exclusive shops, hotels, restaurants and clubs in the desirable areas of Mayfair, St James's and Soho.



RAPHa



FALLOW



BAO



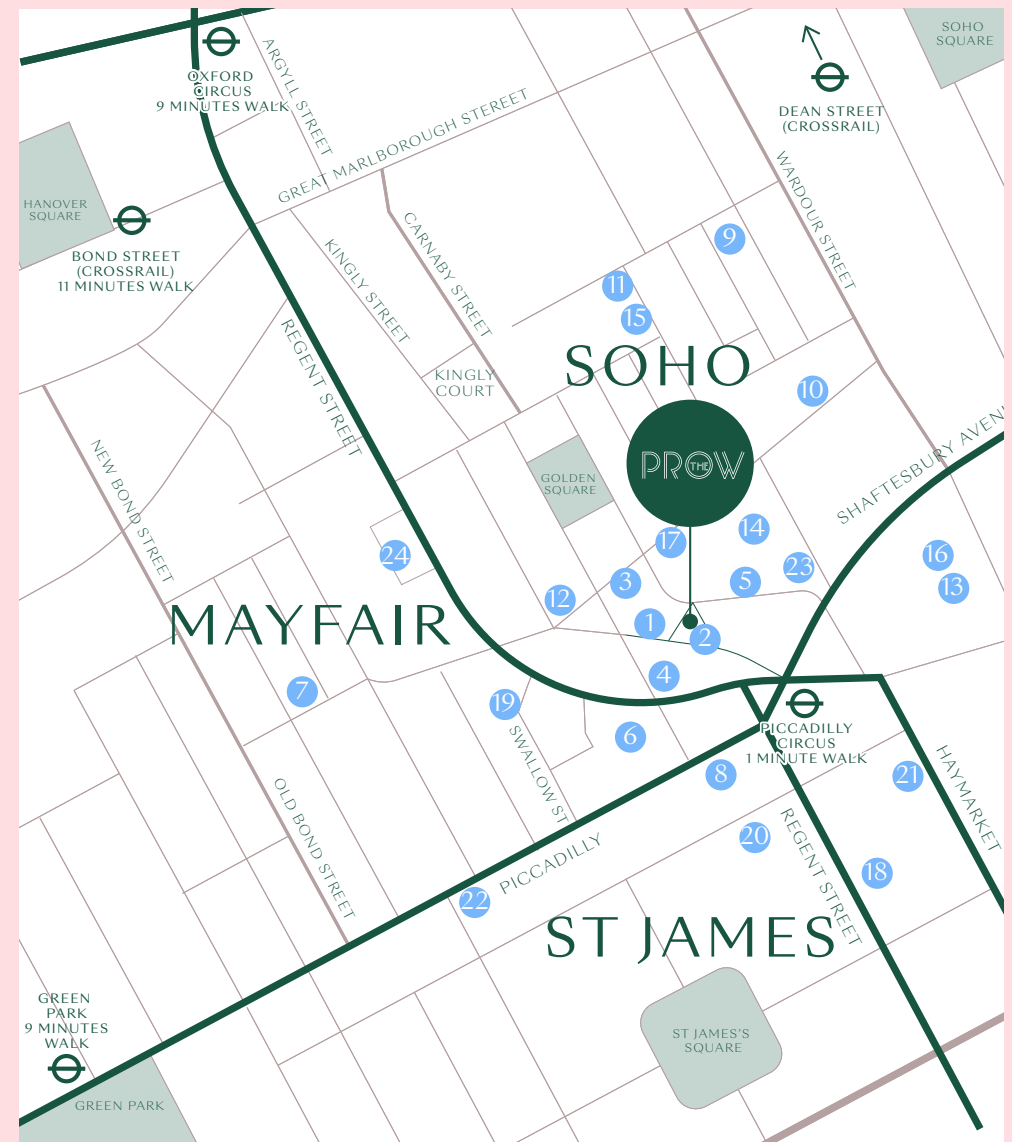
BRASSERIE ZEDÉL



WHOLE FOODS MARKET

Local restaurants, bars, stores and gyms

- 1 Whole Foods Market
- 2 Brasserie Zedel
- 3 Rapha
- 4 Cafe Royal
- 5 Cricket
- 6 Hawkesmoor
- 7 Cecconi's
- 8 Cicchetti's
- 9 Yauatcha
- 10 Lina Stores
- 11 Bao
- 12 1 Warwick St
- 13 Speedboat Bar
- 14 Ham Yard Hotel
- 15 Rita's
- 16 Palomar
- 17 Third Space Gym
- 18 Pure Gym
- 19 Goucho
- 20 Rowley's Restaurant
- 21 Fallow
- 22 Fortnum & Mason
- 23 Sophie's Steakhouse
- 24 Heddon Street



Workplaces

Workplaces is part of The Crown Estate which manages over 10 million sq ft of mixed-use property and is proud to be a core supplier of workplaces in the heart of the West End.



Our high quality, well-designed workplaces range from flexible and collaborative, to bespoke and significant, allowing us to support your business through growth and change. We continuously invest in enhancing the public areas, streets and amenities of the west end, to ensure it remains an outstanding destination.

We have thoughtfully designed an ecosystem where our buildings are more than just a workplace. Your health, wellness and happiness is important to us which is why at The Crown Estate we ensure all our customers have access to a variety of complimentary wellbeing activities such as Yoga, HIIT, Pilates along with exclusive shopping and dining offers.

Contact

Workplaces | THE CROWN
ESTATE

ALKA JOTANGIA

alka@thecrownstateworkplaces.com

07826 946 336

GEORGE WALKER

george@thecrownstateworkplaces.com

07783 770 849

BLUEBOOK

ROBBIE ROWAN

robbie@bluebooklondon.co.uk

07973 267 435

OLLIE PARDOE

ollie@bluebooklondon.co.uk

07748 626 103

Important notice relating to the misrepresentation act 1967 and the property misdescription act 1991

Bluebook for themselves and for the vendors or lessors of this property whose agents they are, give notice that:- a. The particulars are set out as a general outline only for guidance and do not constitute, nor constitute part of, an offer or contract; b. All descriptions, dimensions, references to condition and necessary permissions for use and occupation, and other details are believed to be correct, but any intending purchasers, tenants or third parties should not rely on them as statements or representations of fact but satisfy themselves that they are correct by inspection or otherwise; c. No person in the employment of Bluebook has any authority to make or give any representation or warranty whatever in relation to the property; d. Any images may be computer generated. Any photographs show only certain parts of the property as they appeared at the time they were taken. December 2023. S014135. sirendesign.co.uk

