



**Coopers**

**Coopers**

Benedictine Road, Cheylesmore, Coventry CV3 6GW

Price: £299,999





## Benedictine Road

Cheylesmore, Coventry

A well proportioned three bedroom home in a popular Cheylesmore setting, offering a practical layout, good room sizes and clear potential to improve over time.

Council Tax band: C

Tenure: Freehold

EPC Energy Efficiency Rating: C

EPC Environmental Impact Rating: D

- Three bedroom mid terrace home in Cheylesmore
- Popular, well established residential location
- Front lounge with good natural light
- Separate rear dining room, open to the kitchen
- Kitchen with plenty of cupboard space and scope to update
- Ground floor WC
- Two double bedrooms plus a third single
- First floor shower room
- Good length rear garden with potential to enhance

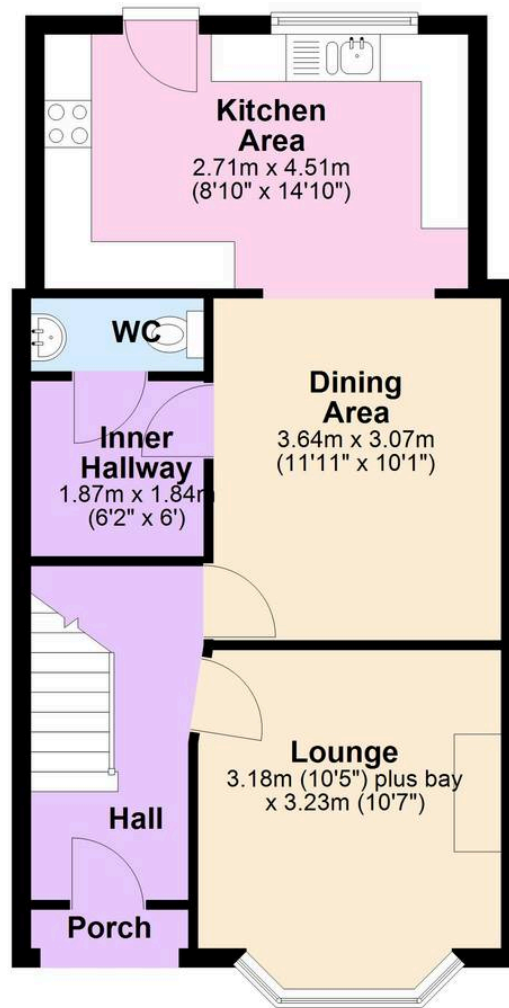






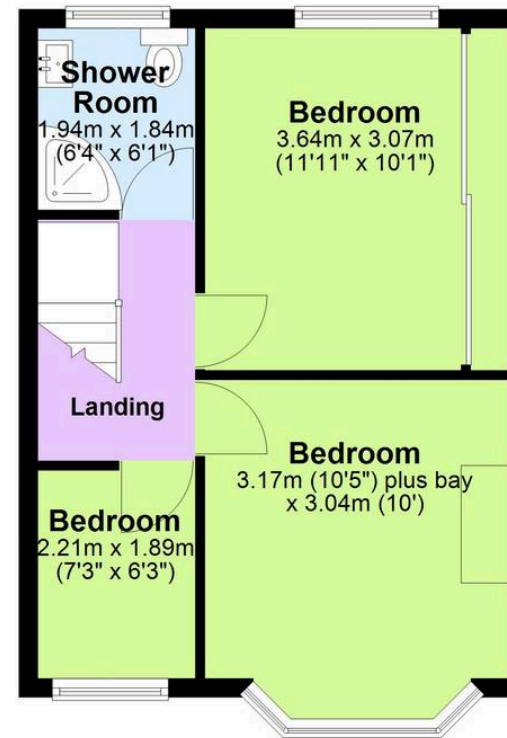
## Ground Floor

Approx. 47.6 sq. metres (512.1 sq. feet)



## First Floor

Approx. 34.6 sq. metres (371.9 sq. feet)



"Floor plan measurements are approximate and are for illustrative purposes only. While every effort is made to ensure accuracy, no responsibility is taken for any error, omission, or misstatement. Do not scale from this plan.

Plan produced using PlanUp.□□

**Coopers Estate Agents**

Coopers, 22 New Union Street – CV1 2HN

024 7655 2841 • [sales@coopersestateagents.com](mailto:sales@coopersestateagents.com) • [www.coopersestateagents.com/](http://www.coopersestateagents.com/)

**Coopers**

Coopers Chartered Surveyors Ltd, 22 New Union Street, Coventry, West Midlands

CV1 2HN, 024 7655 2841, [sales@coopers-cov.com](mailto:sales@coopers-cov.com). Company Registration

Number: 6725089 / VAT number: 940 3555 34