



Coopers

Coopers

Knoll Drive, Styvechale, Coventry CV3 5DF

Price: £360,000



Knoll Drive

Styvechale, Coventry

Beautiful 3-bed semi-detached home in a sought-after location. Modern kitchen, through lounge, and delightful rear garden. Garage with power and plumbing. Opposite green space and close to amenities. Ideal for a vibrant lifestyle.

Council Tax band: D / Tenure: Freehold

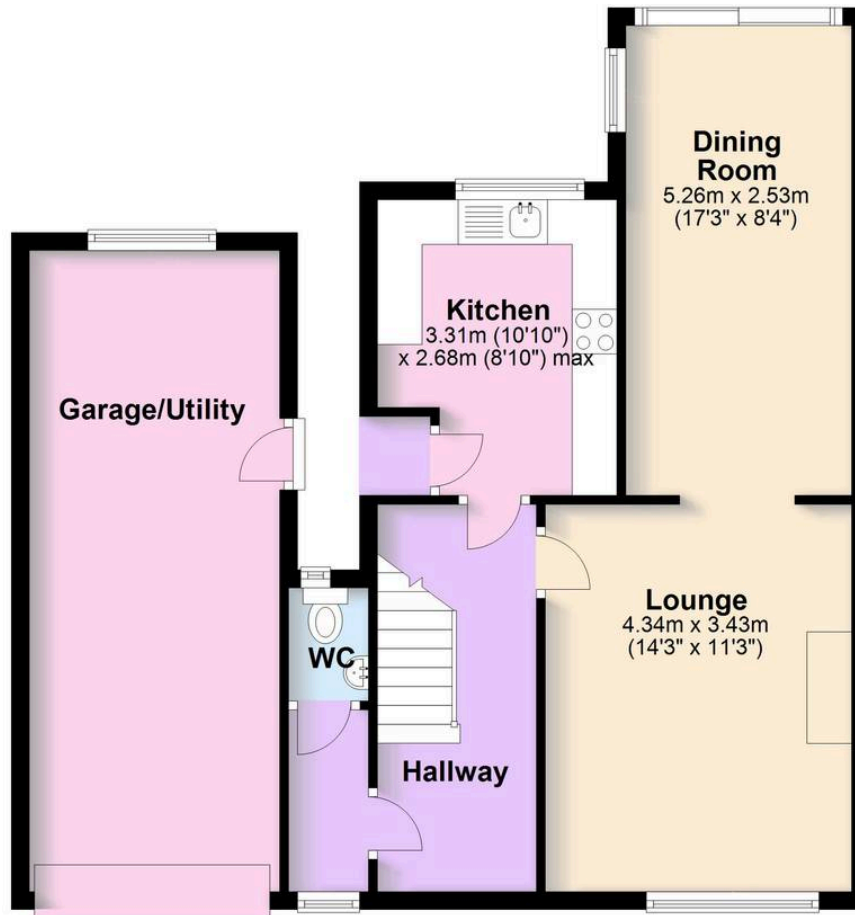
EPC Energy Efficiency Rating: D

- A fantastic three bedroom semi-detached home
- Very popular location, opposite a lovely public green space
- Also close to a range of amenities, including local shops and restaurants
- Through lounge and dining area, extended to create a pleasant view of the rear garden
- Modern kitchen
- Downstairs toilet and coat/shoe storage
- Garage with power and plumbing for utility appliances
- Three first floor bedrooms
- Large family bathroom
- Great sized rear garden

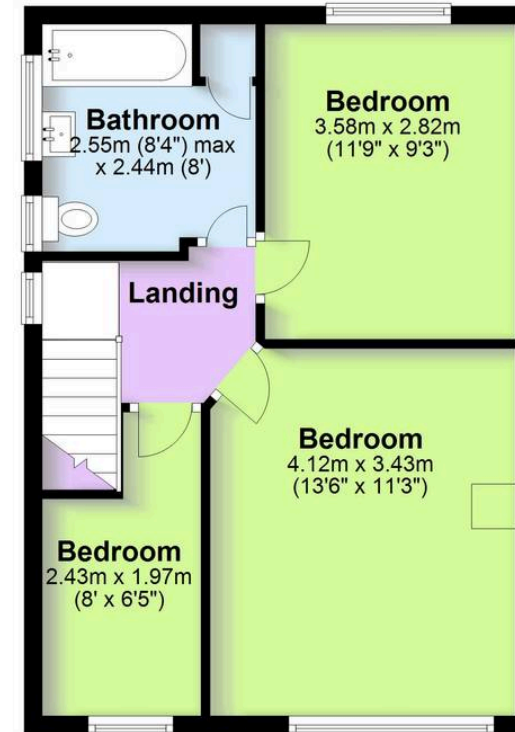




Ground Floor



First Floor



Total area: approx. 113.2 sq. metres (1218.9 sq. feet)

This floor plan is for illustrative purposes only and should be used as such by any prospective purchaser. Whilst every attempt has been made to ensure the accuracy of this plan, measurements of doors, windows, rooms and other items are approximate and no responsibility is taken for any error, omission or mis-statement.
Plan produced using PlanUp.

Coopers Estate Agents

Coopers, 22 New Union Street - CV1 2HN

Coopers

024 7655 2841 • sales@coopersestateagents.com • www.coopersestateagents.com/

Coopers Chartered Surveyors Ltd, 22 New Union Street, Coventry, West Midlands

CV1 2HN, 024 7655 2841, sales@coopers-cov.com. Company Registration

Number: 6725089 / VAT number: 940 3555 34