



Coopers

Lythalls Lane, Holbrooks, Coventry CV6 6FW

Guide Price £400,000



Coopers

Lythalls Lane

Holbrooks, Coventry

Extended 4-bed semi-detached home with spacious living room, extended breakfast kitchen, utility room, 4 bedrooms, large family bathroom. Outside, a wide plot with outbuildings and ample parking.

Council Tax band: B

Tenure: Freehold

EPC Energy Efficiency Rating: C

- Four bedroom extended semi-detached home
- Huge potential
- Large plot with large outbuildings - workshop, office, toilet and shower room
- Living room, leading through to open plan breakfast kitchen
- Separate utility room
- Four first floor bedrooms and large family bathroom
- Lovely rear garden
- Large amount of off-road parking



Coopers



Coopers

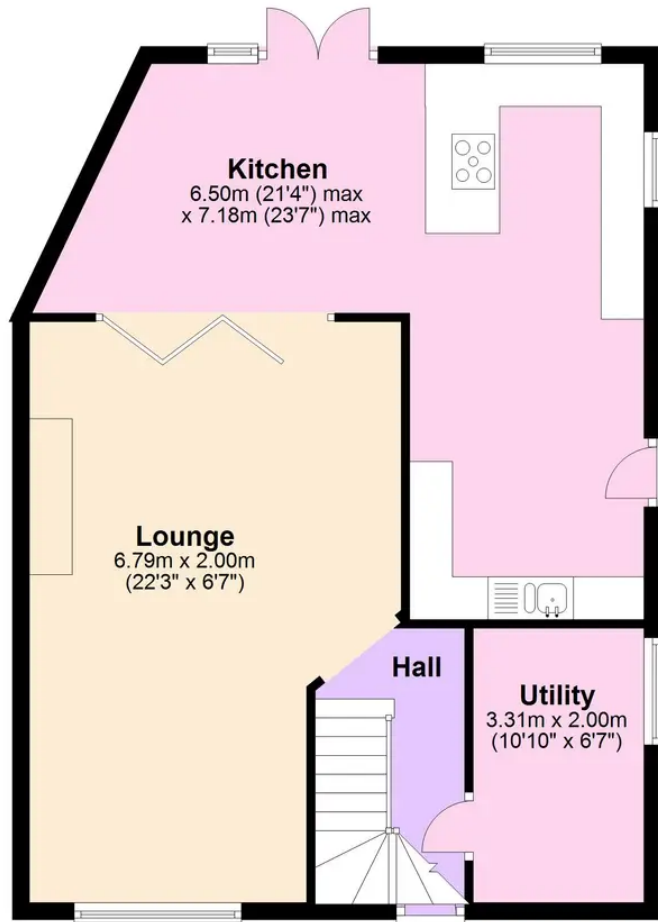


Coopers



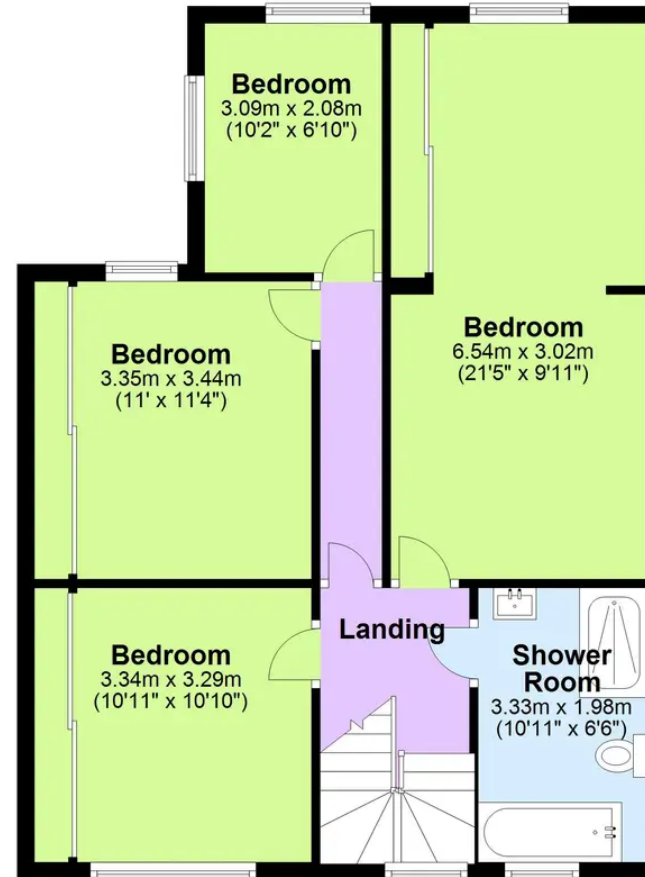
Ground Floor

Approx. 68.6 sq. metres (738.1 sq. feet)



First Floor

Approx. 66.4 sq. metres (714.9 sq. feet)



Total area: approx. 135.0 sq. metres (1453.0 sq. feet)

This floor plan is for illustrative purposes only and should be used as such by any prospective purchaser. Whilst every attempt has been made to ensure the accuracy of this plan, measurements of doors, windows, rooms and other items are approximate and no responsibility is taken for any error, omission or mis-statement.
Plan produced using PlanUp.

Coopers Estate Agents

Coopers, 22 New Union Street - CV1 2HN

024 7655 2841 • sales@coopersestateagents.com • www.coopersestateagents.com/

Coopers Chartered Surveyors Ltd, 22 New Union Street, Coventry, West Midlands

CV1 2HN, 024 7655 2841, sales@coopers-cov.com. Company Registration

Number: 6725089 / VAT number: 940 3555 34