



Oddicombe Croft, Styvechale, Coventry CV3 5PB

£355,000



Oddicombe Croft

Styvechale, Coventry CV3 5PB

In prime south Coventry location, this very attractive post war semi detached family home is stylishly presented and fitted and enjoys very well laid out gardens with large front driveway and side tandem garage. Must be viewed! NOTE: This property is owned by an employee of Coopers Estate Agents.

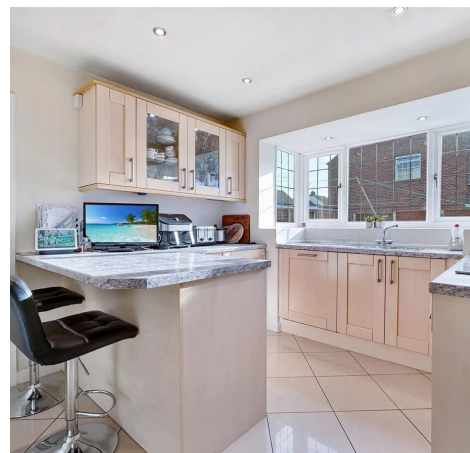
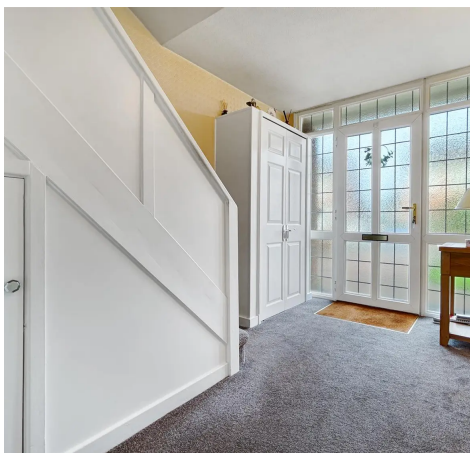
Council Tax band: D

Tenure: Freehold

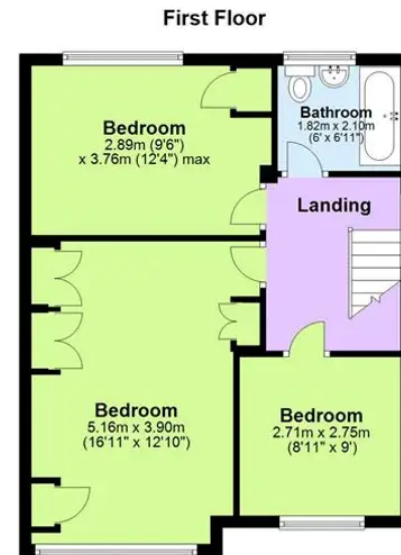
EPC Energy Efficiency Rating: D

EPC Environmental Impact Rating: E

- Post war semi detached house well presented throughout
- Living room, kitchen and separate dining room
- Three bedrooms and bathroom
- Easily maintained gardens, direct driveway, car port and garage
- Must be viewed internally
- Prime south Coventry location







This floor plan is for illustrative purposes only and should be used as such by any prospective purchaser. Whilst every attempt has been made to ensure the accuracy of this plan, measurements of doors, windows, rooms and other items are approximate and no responsibility is taken for any error, omission or mis-statement.
Plan produced using PlanUp.

Coopers Estate Agents

Coopers, 22 New Union Street - CV1 2HN

024 7655 2841 • sales@coopersestateagents.com • www.coopersestateagents.com/

Coopers Chartered Surveyors Ltd, 22 New Union Street, Coventry, West Midlands

CV1 2HN, 024 7655 2841, sales@coopers-cov.com. Company Registration

Number: 6725089 / VAT number: 940 3555 34