



CHOICE PROPERTIES

Estate Agents

Sherian Sea Road,
Anderby, PE24 5YE

Reduced To £320,000



It is a pleasure for Choice Properties to bring to the market this beautifully presented four bedroom (one en-suite) detached bungalow, situated in the most sought after position, overlooking open field views to the front aspect. The property further benefits from two reception rooms, driveway with additional hard standing and stands proudly upon well tended gardens. Viewing is highly recommended. NO ONWARD CHAIN.

The property has the benefit of Oil central heating and UPVC double glazed windows and doors. Internally the spacious well presented accommodation consists of:

Side entrance door to:

Entrance Hall

10'8" x 11'8"

Thermostat controls for the central heating. Opening to Inner Hall.

Bedroom 1

12'8" x 13'5"

Radiator. Door to:

En-suite

5'6" x 7'3"

With three piece suite which consists of a shower enclosure with electric shower, wash hand basin and w.c. Part tiled walls. Shaver point. Extractor fan. Chrome heated towel rail.

WC

6'8" x 4'10"

With w.c. and wash hand basin. Radiator.

Inner Hall

9'5" x 17'9"

Access to the loft area. Airing cupboard housing the hot water cylinder with immersion heater. Radiator. 2 fitted storage cupboards. Smoke alarm.

Lounge

12'4" x 20'4"

Multi fuel burner set in feature fireplace. Radiator. Large picture window to the front. Open plan leading through to:

Dining Room

14'10" x 8'11"

Radiator. Double doors to the hallway. Door to the Kitchen.

Kitchen

12'0" x 11'2"

Fitted wall and base units with work surfaces over. Integrated electric oven and hob. Sink unit and drainer with mixer taps. Plumbing for dishwasher. Part tiled walls. Radiator. Oil boiler which supplies the central heating and hot water. Programmer controls. Open plan leading through to:

Utility Area

13'8" x 5'9"

Fitted wall and base units with work surfaces over. Stainless steel sink unit and drainer. Plumbing for washing machine. Side entrance door.

Bedroom 2

11'0" x 13'2"

Radiator. Fitted wardrobes.

Bedroom 3

11'0" x 10'5"

Radiator. Fitted wardrobes.

Bedroom 4

11'0" x 11'1"

Radiator.

Bathroom

13'1" x 13'8" to widest dimensions

L-shaped. With 5 piece bathroom suite which consists of panelled bath, shower enclosure with mixer shower, wash hand basin set in vanity unit, w.c. and bidet. Part tiled walls. 2 Radiators.

Driveway

Driveway to the front of the property with additional hard standing for touring caravan.

Gardens

To the front of the property are lawned gardens with feature planting. To either side is gated access to the privately enclosed garden which is also laid to lawn with a spacious paved patio area. Workshop, Summerhouse and sheds.

Tenure

Freehold

Council Tax

Local Authority - East Lindsey District Council,
The Hub,
Mareham Road,
Horncastle,
Lincolnshire,
LN9 6PH
Tel. No. 01507 601 111
Website: www.e-lindsey.gov.uk

Council Tax Band - According to the Valuation Office Agency Website the property is currently in Council Tax Band D.

Viewing Arrangements

By appointment through Choice Properties on 01507 462277.

Opening Hours

Monday to Friday 9.00 a.m to 5.00 p.m.

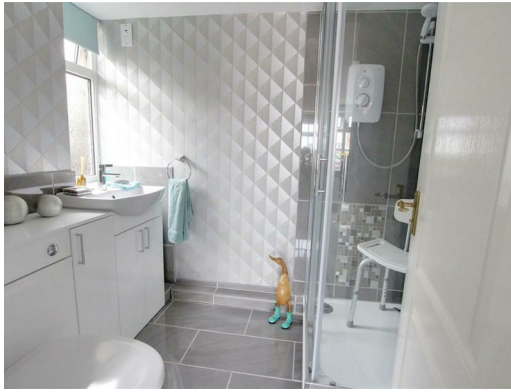
Saturday 9.00 a.m. to 3.00 p.m.

Making an offer

If you are interested in making an offer on this property please have a chat with us and we will be happy to start the negotiations for you. Under money laundering regulation we will ask you to provide us with formal photographic ID by way of either a passport or driving licence. If you are travelling from afar we would advise bringing this documentation with you just in case this home is perfect for you.

We would also like to make you aware that we will require details of your estate agents, proof of funds should you be a cash buyer and solicitors details, as this helps us to start the transaction quickly for you.

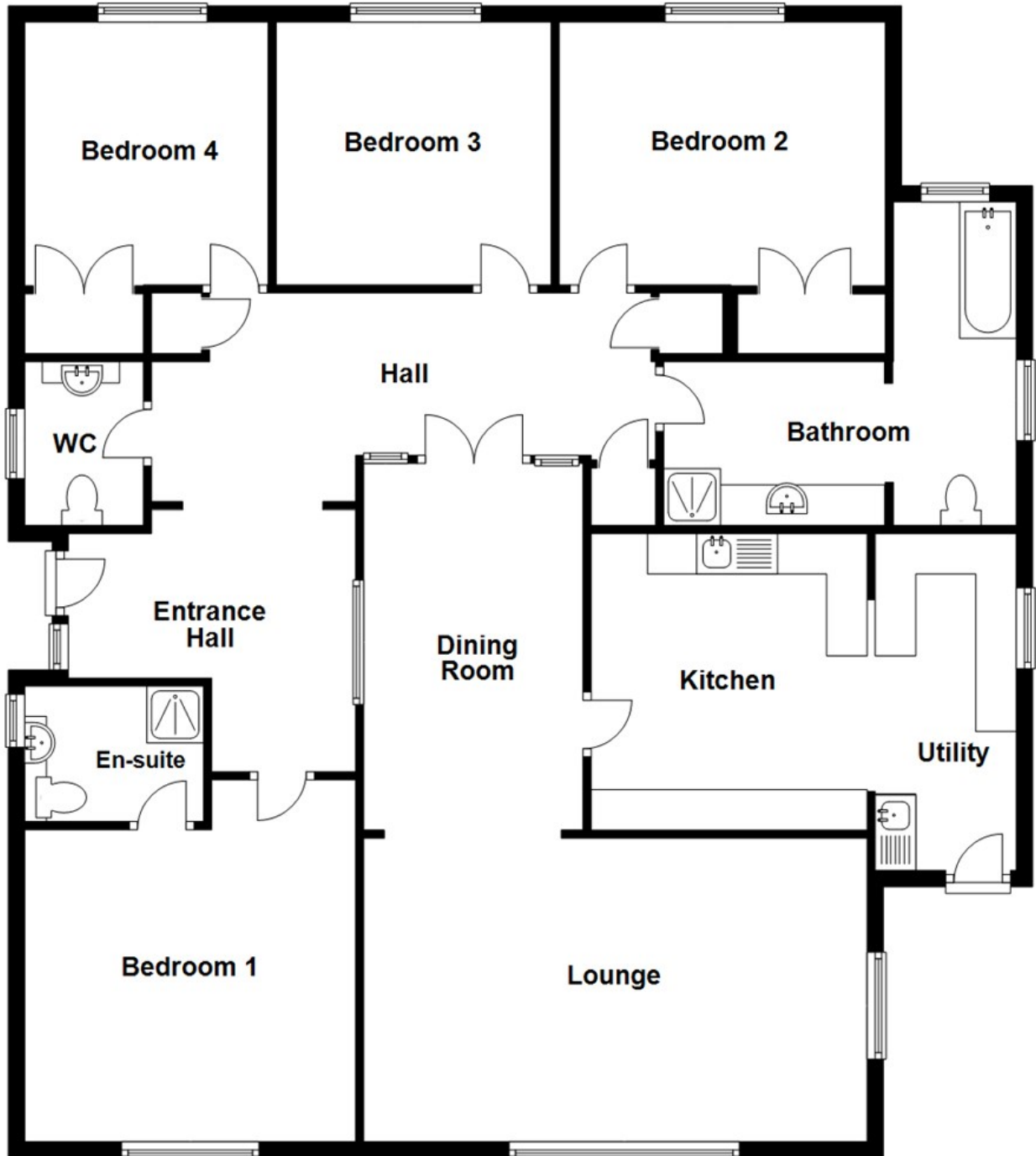
Choice Properties have not tested any included apparatus, equipment, fixtures, fittings, central heating systems or services mentioned in these particulars and purchasers are advised to satisfy themselves as to their working order and condition. Buyers are strongly advised to obtain verification from their Solicitor or Surveyor regarding the working order and condition of all the items included. These particulars do not constitute, nor constitute any part of, an offer or contract. All statements contained in these particulars as to this property are made without responsibility on the part of Choice Properties or the vendors or lessors. None of the statements contained in these particulars as to this property are to be relied on as statements or representations of fact. All measurements have been taken as a guide to prospective buyers only, and are approximate. Any intending purchasers must satisfy themselves by inspection or otherwise as to the correctness of each of the statements contained in these particulars. The vendors do not make or give and neither Choice Properties nor any person in their employment has any authority to make or give any representation or warranty whatever in relation to this property.







Ground Floor



Directions

Follow your SatNav directions to postcode PE24 5YE.

