



€ 1.090.000



CODE SP21
LINKED VILLA

Alongside the Royal Golf Course

Bedrooms: 2
Bathrooms: 2
Swimming pool: Yes

Built size: 216m²
Plot size: Not Applicable

Ownership: Private
Energy Efficiency: C

ROYAL GOLF VILLA

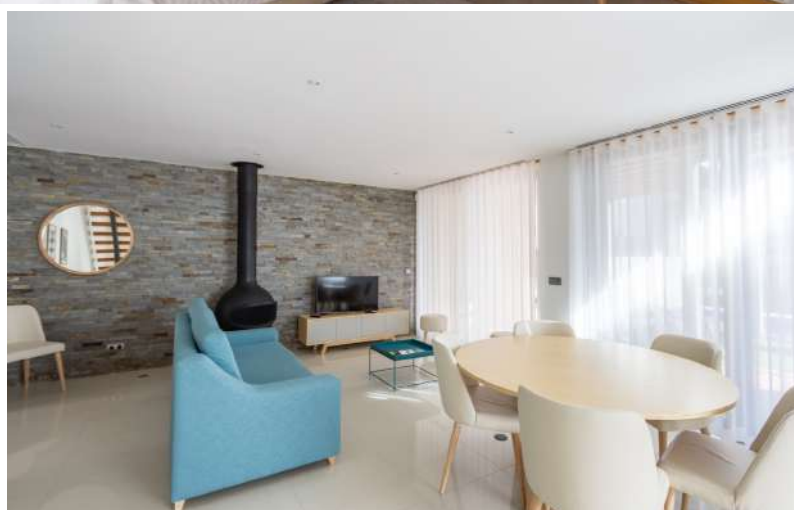
Vale do Lobo

This two bedroom Royal Golf Villa is an ideal lock-up-and-leave home, intertwining traditional architecture with contemporary lines.

To the ground floor, an enclosed courtyard leads to the front door. This opens into an open plan lounge and dining area, with patio doors leading out to the terrace with barbecue and swimming pool, with adjoining fully fitted and equipped kitchen with patio doors to a small courtyard. Stairs lead up to the first floor with a master suite offering walk in wardrobe, en suite bathroom and private terrace. There is a further guest suite with shower room. To the lower ground floor is a spacious multi-function room for further guest accommodation, a utility room and guest toilet. The property also offers a garage with parking for a car and a golf buggy.

Situated in a quiet area of the resort alongside the 12th hole of the stunning Royal Golf Course, it offers easy access to all resort facilities.

The property details are to be used only as a guide and not for part of any offer or contract.



PROPERTY DETAILS:

- Guest toilet
- Living room and dining area
- Fully fitted and equipped kitchen
- Utility room
- 1 Bedroom with en suite shower room
- Master suite with dressing area
- Multi-function room
- Garage
- Barbecue
- Covered terraces
- Terraced areas
- Swimming pool
- Alarm system
- Air conditioning
- Wood burning fireplace
- Electric shutters
- Double glazing
- Fly screen

The property details are to be used only as a guide and not for part of any offer or contract.

€ 1.090.000

CODE SP21
LINKED VILLA

Alongside the Royal Golf Course