



## HYDE PARK AGENCIES

ESTATE AGENTS · VALUERS · PROPERTY CONSULTANTS

### Queens Court, Queensway, London



**£1,675 PCM**

A spacious studio flat with plenty of natural daylight set in a fully portered block with lifts. Refurbished to a high standard. Located between Queensway and Bayswater Stations, moments from Hyde Park and shopping and restaurant amenities.

Accommodation: studio room with wall bed which can be put away when required, separate fully fitted kitchen, bathroom.

The flat benefits for ample storage space in the studio room and hallway. Facilities include washing machine and fridge/freezer.

Property rented furnished.

Rent includes central heating and hot water.

Electricity, water rates & council tax payable by the tenant in addition to the rent.

Available 19 January 2026

EPC Rating: C

Council Tax Band: B

94 Queensway, London W2 3RR  
T: +44 207 229 4495 E: [info@hydeparkagencies.com](mailto:info@hydeparkagencies.com)

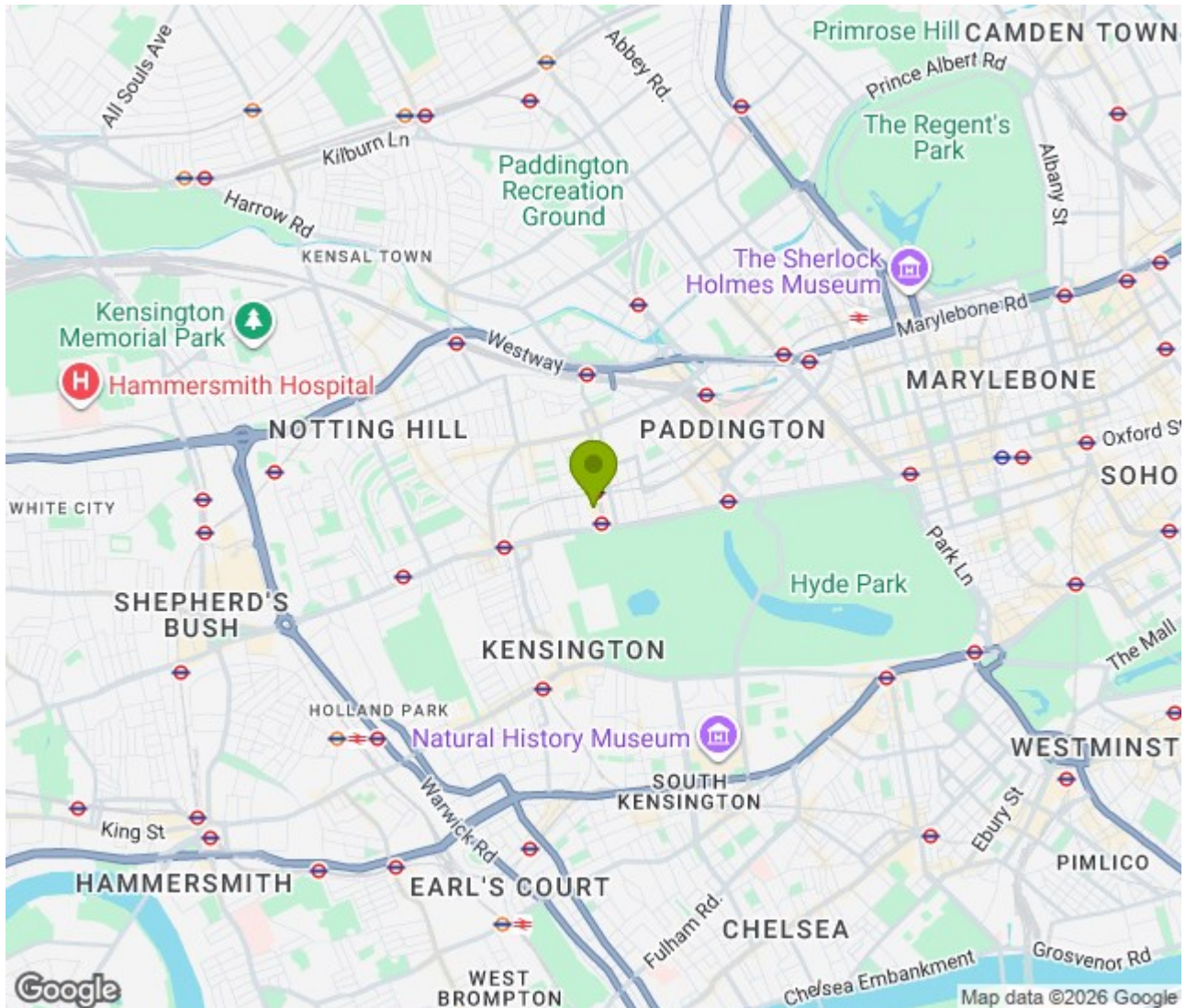
[www.hydeparkagencies.com](http://www.hydeparkagencies.com)







**Location:** Queensway, London





## Queen's Court, Queensway, W2

Approx. Gross Internal Area \*  
282 Sq Ft - 26.20 Sq M

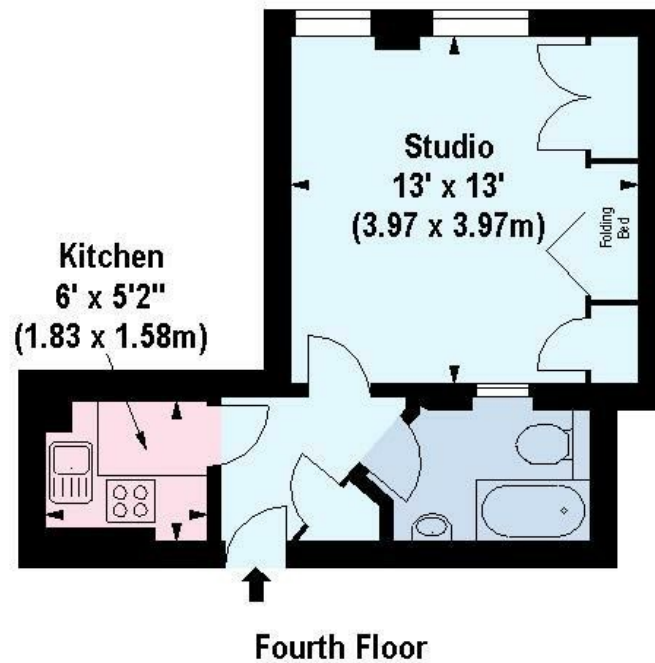


Illustration For Identification Purposes Only. Not To Scale

\*Floorplan Drawn According To RICS Guidelines

© www.alanaiken.com 2015 (aa)

### Energy Efficiency Rating

	Current	Potential
Very energy efficient - lower running costs		
(92 plus) <b>A</b>		
(81-91) <b>B</b>		
(69-80) <b>C</b>		
(55-68) <b>D</b>		
(39-54) <b>E</b>		
(21-38) <b>F</b>		
(1-20) <b>G</b>		
Not energy efficient - higher running costs		
	69	77
<b>England &amp; Wales</b>	EU Directive 2002/91/EC	

### Environmental Impact (CO<sub>2</sub>) Rating

	Current	Potential
Very environmentally friendly - lower CO <sub>2</sub> emissions		
(92 plus) <b>A</b>		
(81-91) <b>B</b>		
(69-80) <b>C</b>		
(55-68) <b>D</b>		
(39-54) <b>E</b>		
(21-38) <b>F</b>		
(1-20) <b>G</b>		
Not environmentally friendly - higher CO <sub>2</sub> emissions		
<b>England &amp; Wales</b>	EU Directive 2002/91/EC	