



HYDE PARK AGENCIES

ESTATE AGENTS · VALUERS · PROPERTY CONSULTANTS

Princess Court, Queensway, London, W2



£2,300 Per Month

Exceptionally large, bright one bedroom flat on the 4th floor of a sought after purpose built block with lifts and concierge.

Located in the heart of Bayswater, close to the open spaces of Hyde Park, this property has a large living room, separate kitchen, large double bedroom with generous storage and full bathroom. The property faces to the rear the building and is very quiet and has been recently redecorated.

Furnished.

Rent includes central heating and hot water.

EPC Rating - C
Council Tax Band - D

Available 1 August 2025.

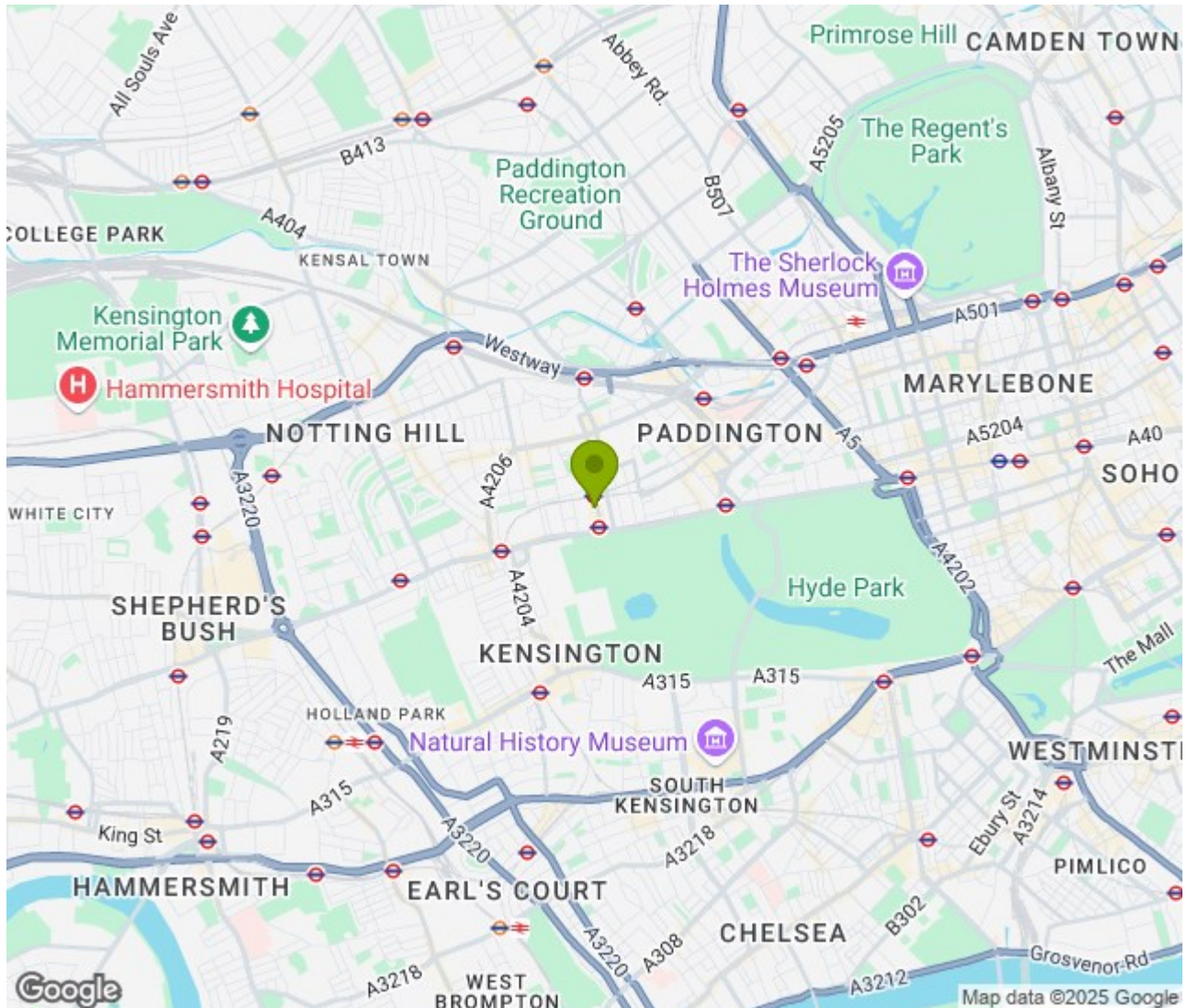
94 Queensway, London W2 3RR
T: +44 207 229 4495 E: info@hydeparkagencies.com

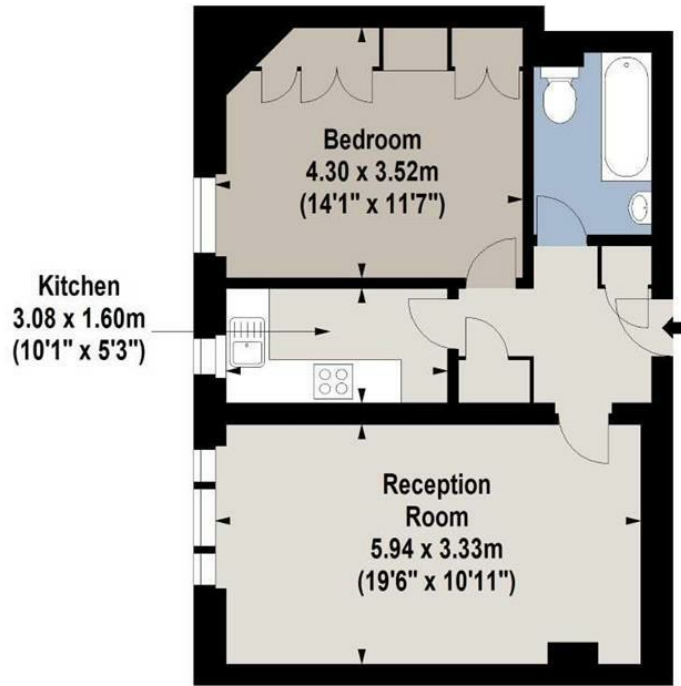
www.hydeparkagencies.com





Location: , London





Fourth Floor




For Identification Purposes Only. Not To Scale. © www.totalvista.uk 2024

Princess Court, W2

Approx. Gross Internal Area
51.75 Sq M - 557 Sq Ft



Energy Efficiency Rating

	Current	Potential
Very energy efficient - lower running costs		
(92 plus) A		
(81-91) B		
(69-80) C		
(55-68) D		
(39-54) E		
(21-38) F		
(1-20) G		
Not energy efficient - higher running costs		
	70	80
England & Wales	EU Directive 2002/91/EC 	

Environmental Impact (CO₂) Rating

	Current	Potential
Very environmentally friendly - lower CO ₂ emissions		
(92 plus) A		
(81-91) B		
(69-80) C		
(55-68) D		
(39-54) E		
(21-38) F		
(1-20) G		
Not environmentally friendly - higher CO ₂ emissions		
England & Wales	EU Directive 2002/91/EC 