



HYDE PARK AGENCIES

ESTATE AGENTS · VALUERS · PROPERTY CONSULTANTS

Room 2, 67 Ralph Court Queensway London



£1,050 PCM

Double room in a lovely FLATSHARE (3 rooms in total - 2 bathrooms) located in Bayswater close to Porchester Centre.

SINGLE OCCUPANTS ONLY

Double bed, generous storage, Communal dining hall, separate kitchen and bathroom shared with 1 other room only. Quiet aspect in secure portered block. Lift. All bills included and also includes cleaning of all communal areas weekly.

Furnished.

Available Now

All bills included, and also weekly cleaning of communal areas.

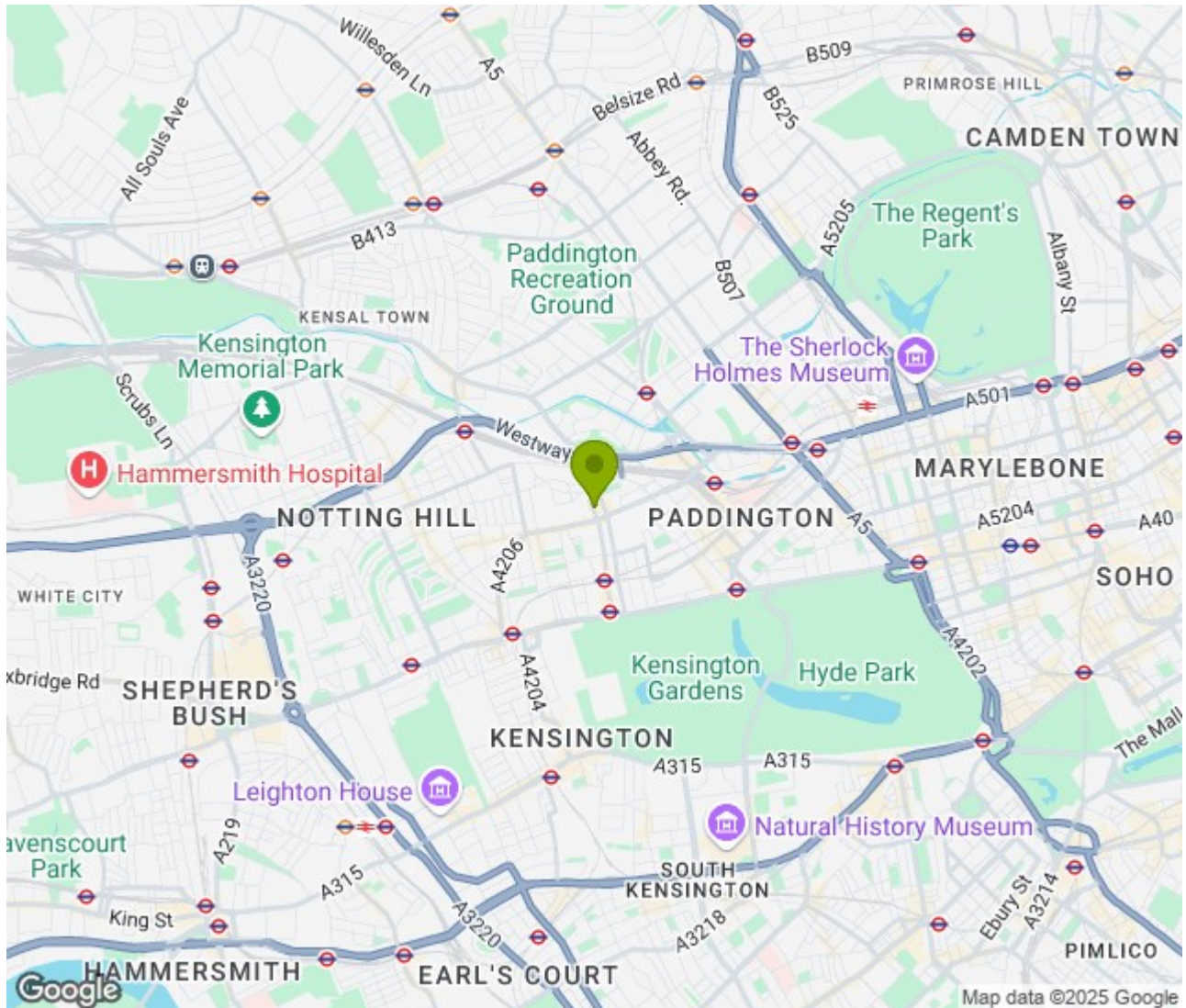
94 Queensway, London W2 3RR
T: +44 207 229 4495 E: info@hydeparkagencies.com

www.hydeparkagencies.com





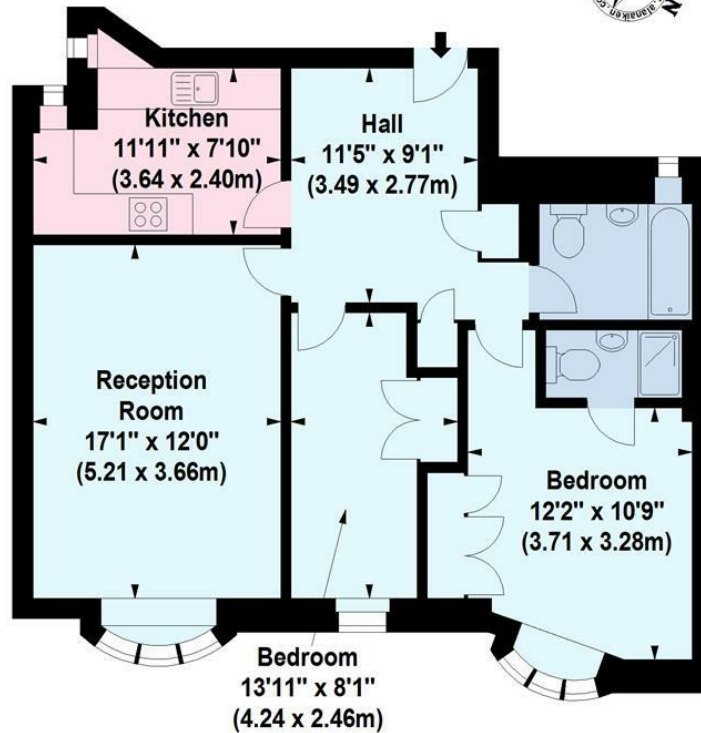
Location: Queensway, London





Ralph Court, Queensway, W2

Approx. Gross Internal Area *
773 Sq Ft - 71.81 Sq M



Third Floor

Illustration For Identification Purposes Only. Not To Scale
*Floorplan Drawn According To RICS Guidelines
© www.alanaiken.com 2014 (aa)

Energy Efficiency Rating		
	Current	Potential
Very energy efficient - lower running costs		
(92 plus) A		82
(81-91) B		
(69-80) C	69	
(55-68) D		
(39-54) E		
(21-38) F		
(1-20) G		
Not energy efficient - higher running costs		
England & Wales		EU Directive 2002/91/EC

Environmental Impact (CO ₂) Rating		
	Current	Potential
Very environmentally friendly - lower CO ₂ emissions		
(92 plus) A		
(81-91) B		
(69-80) C		
(55-68) D		
(39-54) E		
(21-38) F		
(1-20) G		
Not environmentally friendly - higher CO ₂ emissions		
England & Wales		EU Directive 2002/91/EC