



## HYDE PARK AGENCIES

ESTATE AGENTS · VALUERS · PROPERTY CONSULTANTS

### Queens Court, Bayswater, London

#### 1 Bedroom Flat - Studio



**£1,800 Per Month**

**AVAILABLE 2 JUNE 2025**

Recently renovated bright studio with separate kitchen set on top (6th) floor with lifts of popular portered block on Queensway close to Hyde Park and 2 tube stations (Queensway and Bayswater). Foldaway wall bed offers good living space during daytime. Good storage. Washing machine. Ideally located among a myriad of shops and restaurants. Furnished.

**RENT INCLUDES CENTRAL HEATING & HOT WATER.**

Council Tax Band: B

EPC Rating: E

94 Queensway, London W2 3RR  
T: +44 207 229 4495 E: [info@hydeparkagencies.com](mailto:info@hydeparkagencies.com)

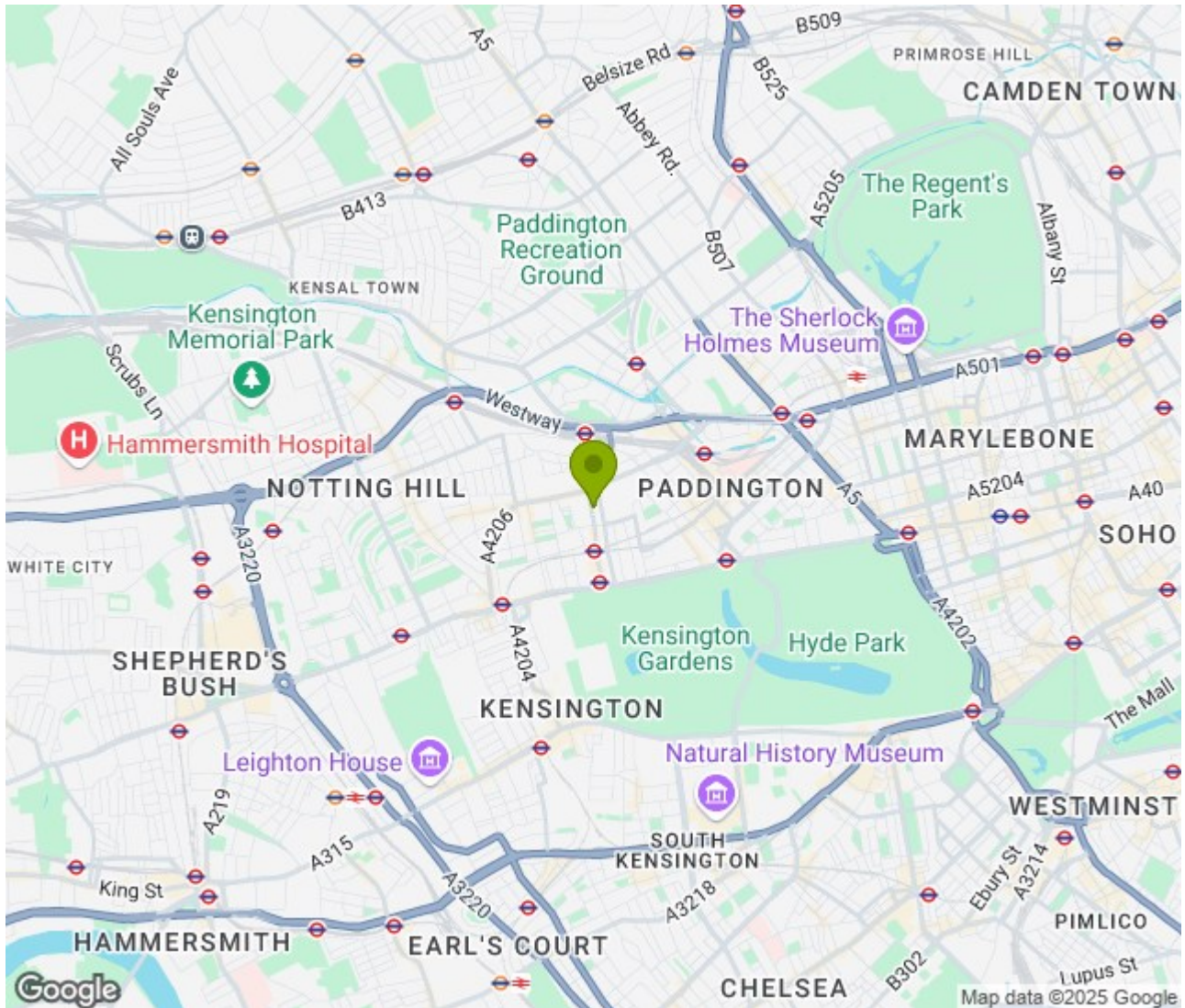
[www.hydeparkagencies.com](http://www.hydeparkagencies.com)

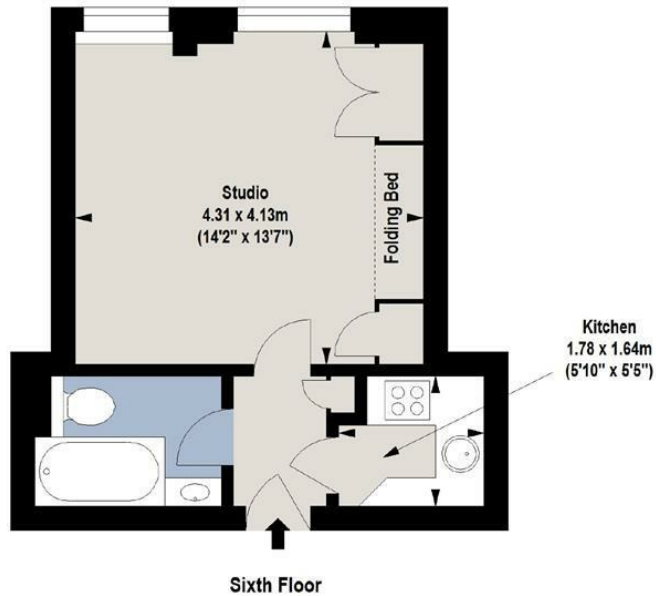






**Location:** Bayswater, London





For Identification Purposes Only. Not To Scale. © www.totalvista.uk 2018

Queen's Court,  
Queensway, W2

Approx. Gross Internal Area  
26.57 Sq M - 286 Sq Ft



### Energy Efficiency Rating

	Current	Potential
Very energy efficient - lower running costs		
(92 plus) A		
(81-91) B		
(69-80) C		
(55-68) D		
(39-54) E	50	59
(21-38) F		
(1-20) G		
Not energy efficient - higher running costs		
England & Wales		
EU Directive 2002/91/EC		

### Environmental Impact (CO<sub>2</sub>) Rating

	Current	Potential
Very environmentally friendly - lower CO <sub>2</sub> emissions		
(92 plus) A		
(81-91) B		
(69-80) C		
(55-68) D		
(39-54) E	48	58
(21-38) F		
(1-20) G		
Not environmentally friendly - higher CO <sub>2</sub> emissions		
England & Wales		
EU Directive 2002/91/EC		