



HYDE PARK AGENCIES

ESTATE AGENTS · VALUERS · PROPERTY CONSULTANTS

Dukes Court, Moscow Road, London



£1,250 Per Month

SINGLE OCCUPANT ONLY (NO couples)

On the floorplan you room is labelled as Room 2

Bright very large ROOM in FLATSHARE - 3 other rooms, sharing a bathroom with 1 person. Sharing kitchen. Good laundry facilities with washing machine and separate dryer. Rent includes ALL BILLS, Internet and weekly cleaning of shared areas.

Available Now.

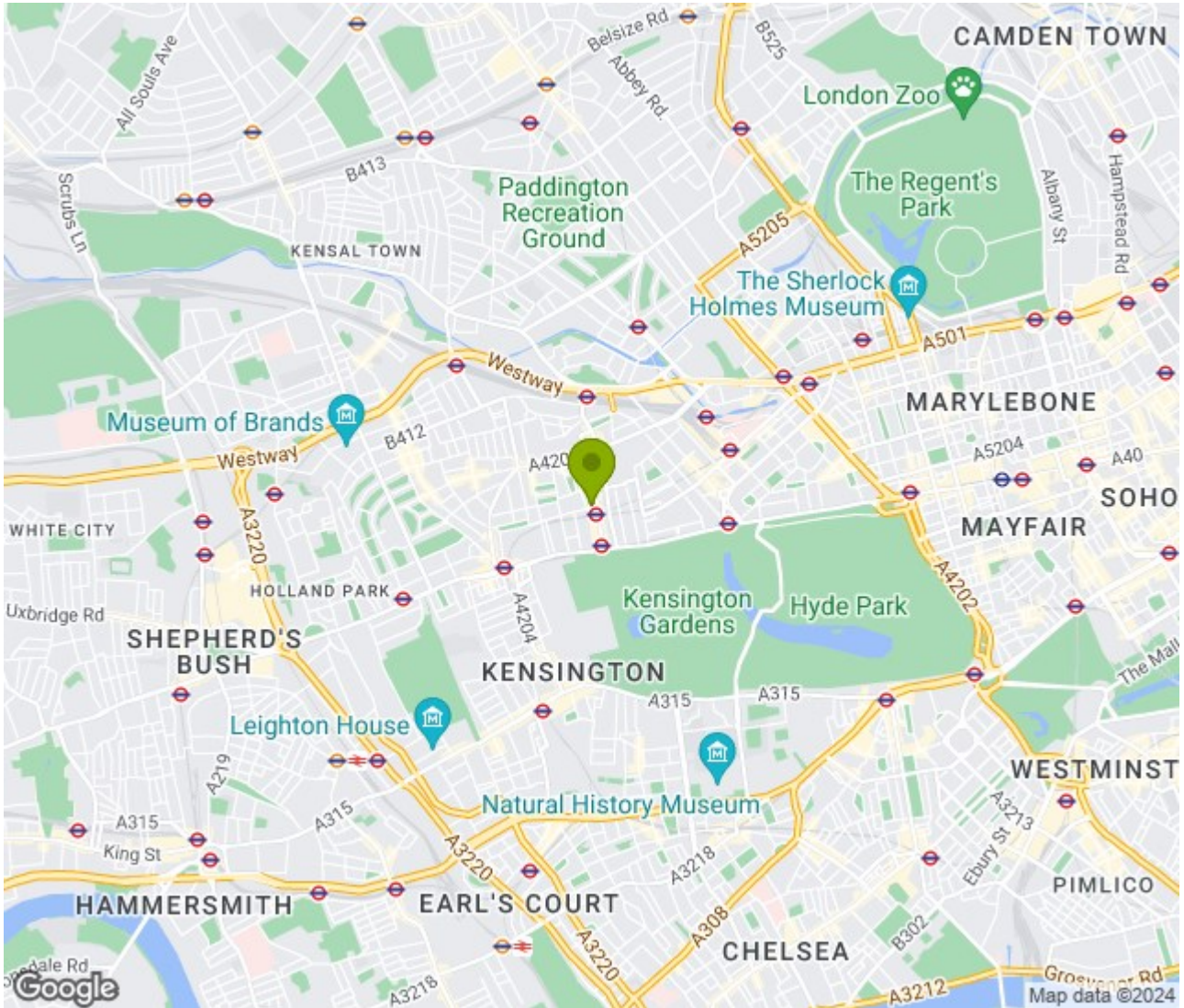
94 Queensway, London W2 3RR
T: +44 207 229 4495 E: info@hydeparkagencies.com

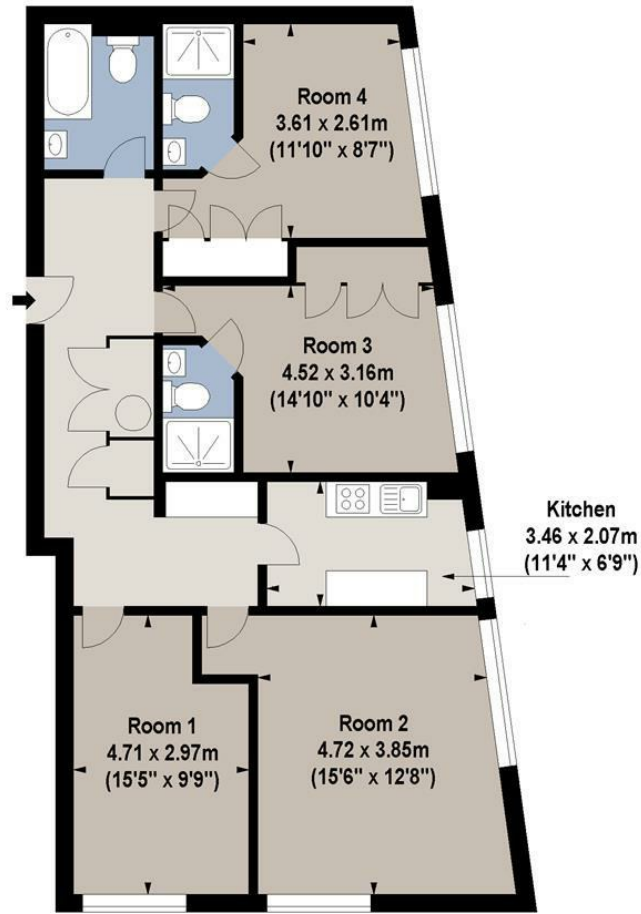
www.hydeparkagencies.com





Location: , London





Third Floor

For Identification Purposes Only. Not To Scale. © www.alanaiken.com 2017



Duke's Court,
Moscow Road, W2

Approx. Gross Internal Area
98.86 Sq M - 1064 Sq Ft



Energy Efficiency Rating		Current	Potential
<i>Very energy efficient - lower running costs</i>			
(92 plus) A			
(81-91) B			
(69-80) C			
(55-68) D			
(39-54) E			
(21-38) F			
(1-20) G			
<i>Not energy efficient - higher running costs</i>			
England & Wales	EU Directive 2002/91/EC		

Environmental Impact (CO ₂) Rating		Current	Potential
<i>Very environmentally friendly - lower CO2 emissions</i>			
(92 plus) A			
(81-91) B			
(69-80) C			
(55-68) D			
(39-54) E			
(21-38) F			
(1-20) G			
<i>Not environmentally friendly - higher CO2 emissions</i>			
England & Wales	EU Directive 2002/91/EC		