



72 Hartland Forest Golf Club
Woolsery, Devon EX39 5RA

Price Guide £89,950

HARDING & CO
ESTATE AGENTS & VALUERS

A 3 bedroom (1 en-suite) detached freehold holiday lodge situated in a lovely position on the edge of this popular development with views over open countryside and a lovely private position from the deck. Internally these properties have interlocking timber beams and vaulted ceilings in most rooms. The accommodation comprises Hall, Open Plan Living Room and Kitchen, Shower Room, 3 Bedrooms (1 with en-suite bathroom), electric heating, parking and 12 months' holiday usage. Golf and fishing available subject to various conditions.

Hartland Forest Golf Club is a small, select complex of holiday lodges in a park-like environment, with fishing lakes and is approximately 4 miles away from the Devon coastline and approximately 1 ½ miles away from Woolsery village. Woolsery is approximately 9 miles distant from the port and market town of Bideford and is served by a bus service. Within a short driving distance are some of North Devon's most breath taking coastlines which include Bucks Mills, Clovelly and Hartland. The village is located approximately 2 miles off the A39 Atlantic Highway which runs from North Devon to the south of Cornwall.



Outside

Number 72 offers plenty of parking adjacent to the property and communal gardens extend to all sides of the holiday lodge. Patio doors lead from the living room onto a private deck on 2 sides of the property; the privacy of the lodge's position is of particular note.

This lodge is being sold to include all fixtures, fittings and furniture.

Energy Performance Certificate: F

Council Tax Banding: Currently Business rated. Normally A Band.

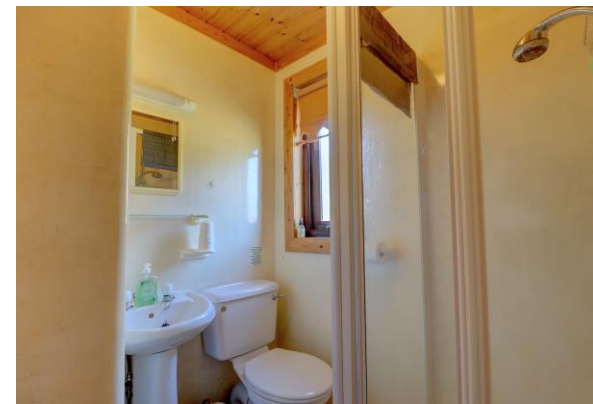
Service Charge

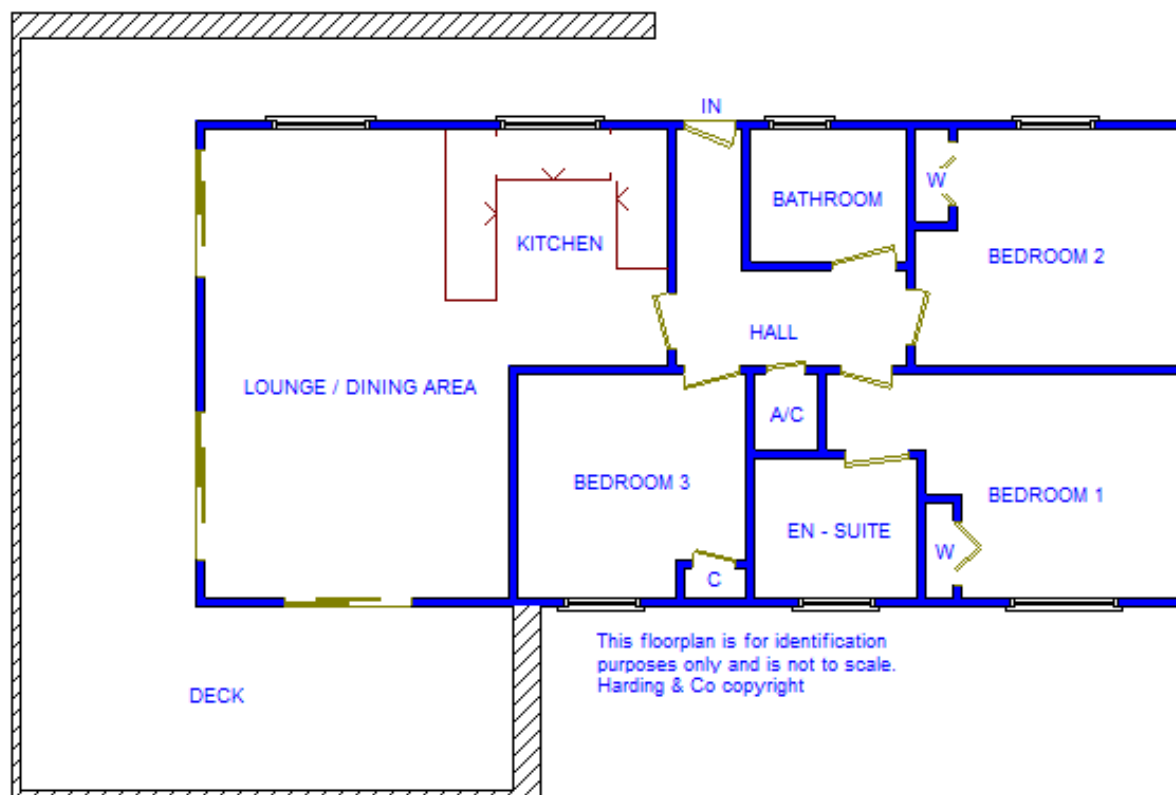
For 2025 the charge is £1551.37 + VAT annual Service Charge payable to include grass cutting in the communal areas, upkeep of access drive and footpath.

Each lodge has its own independent electricity supply with a supplier of your choice. Water by meter charged at SWW rates and sewerage charged at SWW un-metered rate.

Directions

From Bideford take the A39 towards Bude. After passing through Clovelly Cross you will come to the brow of a hill on Bursdon Moor (approx. 4 miles) turn left signposted for West Yagland. Follow this road for just over 1 ½ miles where you will come to a sharp right hand bend with a minor junction where Gorvin Farm will be on your left-hand side. Take the left fork signposted Woolsery, where you will find the entrance to the Golf Course and Holiday Park can be seen on the right-hand side. As you enter the development the car park is the second turning on the right-hand side where you will find Lodge 72.





31 Bridgeland Street, Bideford
Devon Ex39 2PS

t: 01237 476544

f: 01237 422722

e: bideford@hardingresidential.com

www.hardingresidential.com



